

JSCTimber

JSCBevelClad

Bevel Back Weatherboard System

Cavity on Rigid Air Barrier

www.jsctimber.co.nz

www.cedarspec.co.nz

JSCCedarShield
Factory Applied Coating System

BEVEL BACK WEATHERBOARD DRAWING INDEX - JB-RB-00

Product	Application	Detail	Suffix	Description	Issued
JB	RB	Index		Drawing Index	19-03-2010
JB	IG	01		Product installation guidelines	19-03-2010
JB	IG	02		Product installation guidelines	19-03-2010
JB	RB	KN		General installation keynotes	19-03-2010
JB	RB	01		Internal corner detail - L flashing	19-03-2010
JB	RB	02		Internal corner detail - timber corner mould	19-03-2010
JB	RB	05		External corner detail - cover boards	19-03-2010
JB	RB	06		External corner detail - corner soaker flashing	19-03-2010
JB	RB	07		Top Plate to Soffit detail	19-03-2010
JB	RB	08		Bottom Plate detail	19-03-2010
JB	RB	09		Sectional detail	19-03-2010
JB	RB	10		Parapet detail	19-03-2010
JB	RB	11		Pipe Penetration detail	19-03-2010
JB	RB	12		Soffit detail	19-03-2010
JB	RB	14		Scarf Jointing detail	19-03-2010
JB	RB	20	H	Aluminium Window Head detail	19-03-2010
JB	RB	21	J	Aluminium Window Jamb detail	19-03-2010
JB	RB	22	S	Aluminium Window Sill detail	19-03-2010
JB	RB	23	H	Aluminium Door Head detail	19-03-2010
JB	RB	24	J	Aluminium Door Jamb detail	19-03-2010

NOTE All drawings are to be read in conjunction with E2/AS1.

102 Main Road, Kumeu, Auckland, New Zealand
 PO Box 285 Kumeu, Auckland 0841, New Zealand
 T.09 412-7722 F.09 412-7723

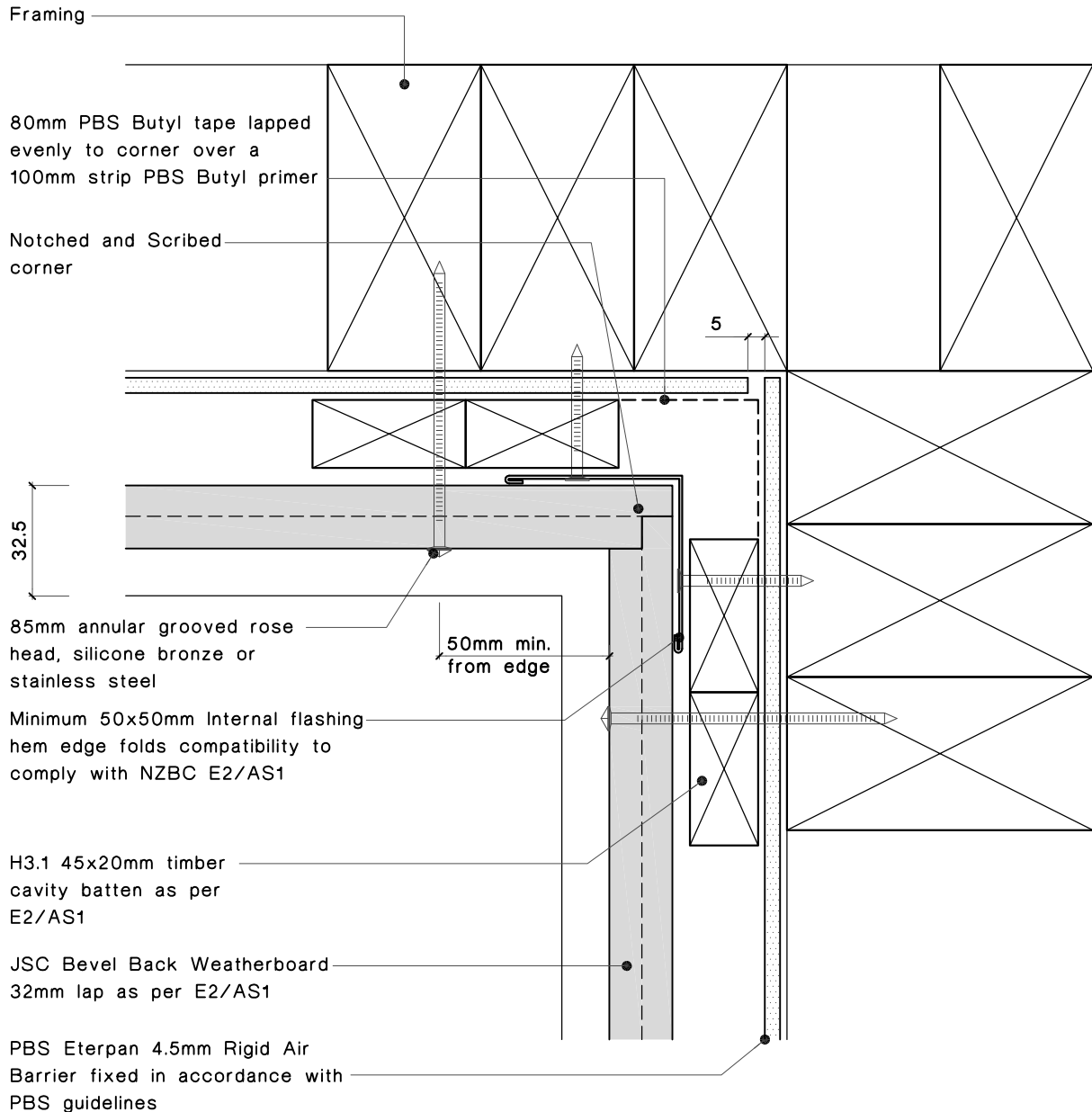
72 Hammersmith Drive, Sockburn, Christchurch, New Zealand
 PO Box 2841 Christchurch 8140, New Zealand
 T.03 348-9726 F.03 365-7727

JSC Timber

www.jsctimber.co.nz

Notes:

- All nail fixings pre-drilled minimum 1mm diameter smaller than the nail gauge.
- All products to be pre-coated & cut edges to be sealed as per Branz Bulletin 411.
- All materials and fixtures are to comply with E2/AS1 Clause 2.2
- Provide PVC tape bond break between H3.2 battens and any flashing.
- Ensure bevelback weathergrooves to be in line with 32mm lap. Specific rebated bevelback profiles to be fitted with a minimum gap of 2mm at the overlap between boards.
- Option PBS Rigid Air Barrier to be sealed with SikaGuard 703w to manufacturers specification.



Internal corner detail

Bevel Back Weatherboards Architectural Profile

JSC Timber

102 Main Road, Kumeu, Auckland, New Zealand
 PO Box 285 Kumeu, Auckland 0841, New Zealand
 Note: Details may be subject to change without notification

T.09 412-7722
 F.09 412-7723
www.jsctimber.co.nz

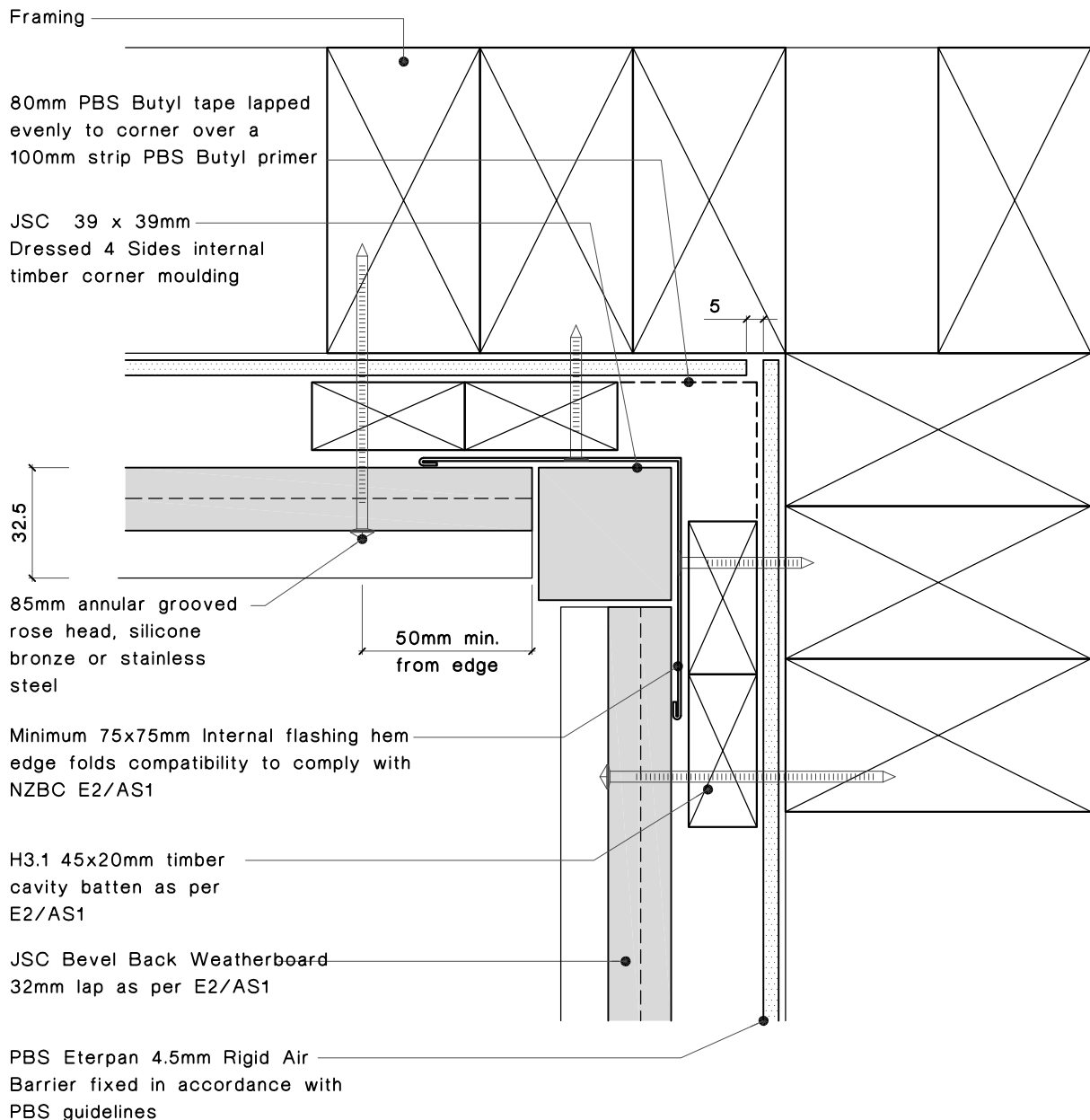
Scale: 1:2

Date: 19/03/10

Dwg:
JB-RB-01

Notes:

- All nail fixings pre-drilled minimum 1mm diameter smaller than the nail gauge.
- All products to be pre-coated & cut edges to be sealed as per Branz Bulletin 411.
- All materials and fixtures are to comply with E2/AS1 Clause 2.2
- Provide PVC tape bond break between H3.2 battens and any flashing.
- Ensure bevelback weathergrooves to be in line with 32mm lap. Specific rebated bevelback profiles to be fitted with a minimum gap of 2mm at the overlap between boards.
- Option PBS Rigid Air Barrier to be sealed with SikaGuard 703w to manufacturers specification.



Internal corner detail

Bevel Back Weatherboards Architectural Profile

JSC Timber

102 Main Road, Kumeu, Auckland, New Zealand
PO Box 285 Kumeu, Auckland 0841, New Zealand

Note: Details may be subject to change without notification

T.09 412-7722

F.09 412-7723

www.jsctimber.co.nz

Scale: 1:2

Date: 19/03/10

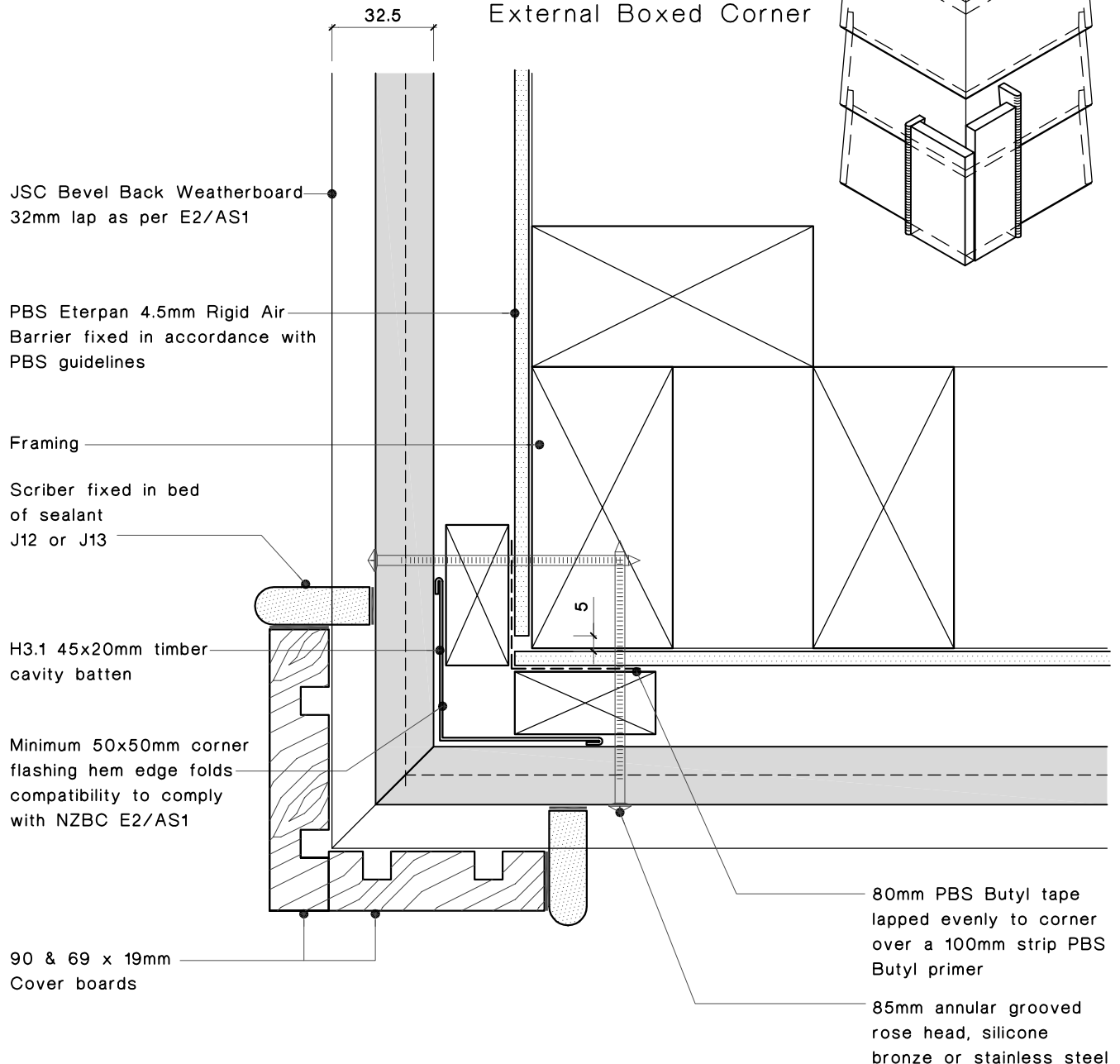
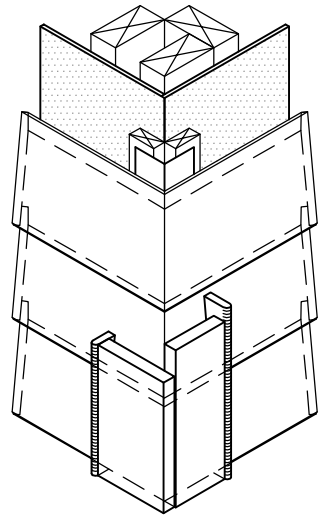
Dwg:

JB-RB-02

Notes:

- All nail fixings pre-drilled minimum 1mm diameter smaller than the nail gauge.
- All products to be precoated & cut edges to be sealed as per Branz Bulletin 411.
- All materials and fixtures are to comply with E2/AS1 Clause 2.2
- Provide PVC tape bond break between H3.2 battens and any flashing.
- Ensure bevelback weathergrooves to be in line with 32mm lap. Specific rebated bevelback profiles to be fitted with a minimum gap of 2mm at the overlap between boards.
- Option PBS Rigid Air Barrier to be sealed with SikaGuard 703w to manufacturers specification.

Isometric Pictorial View
External Boxed Corner

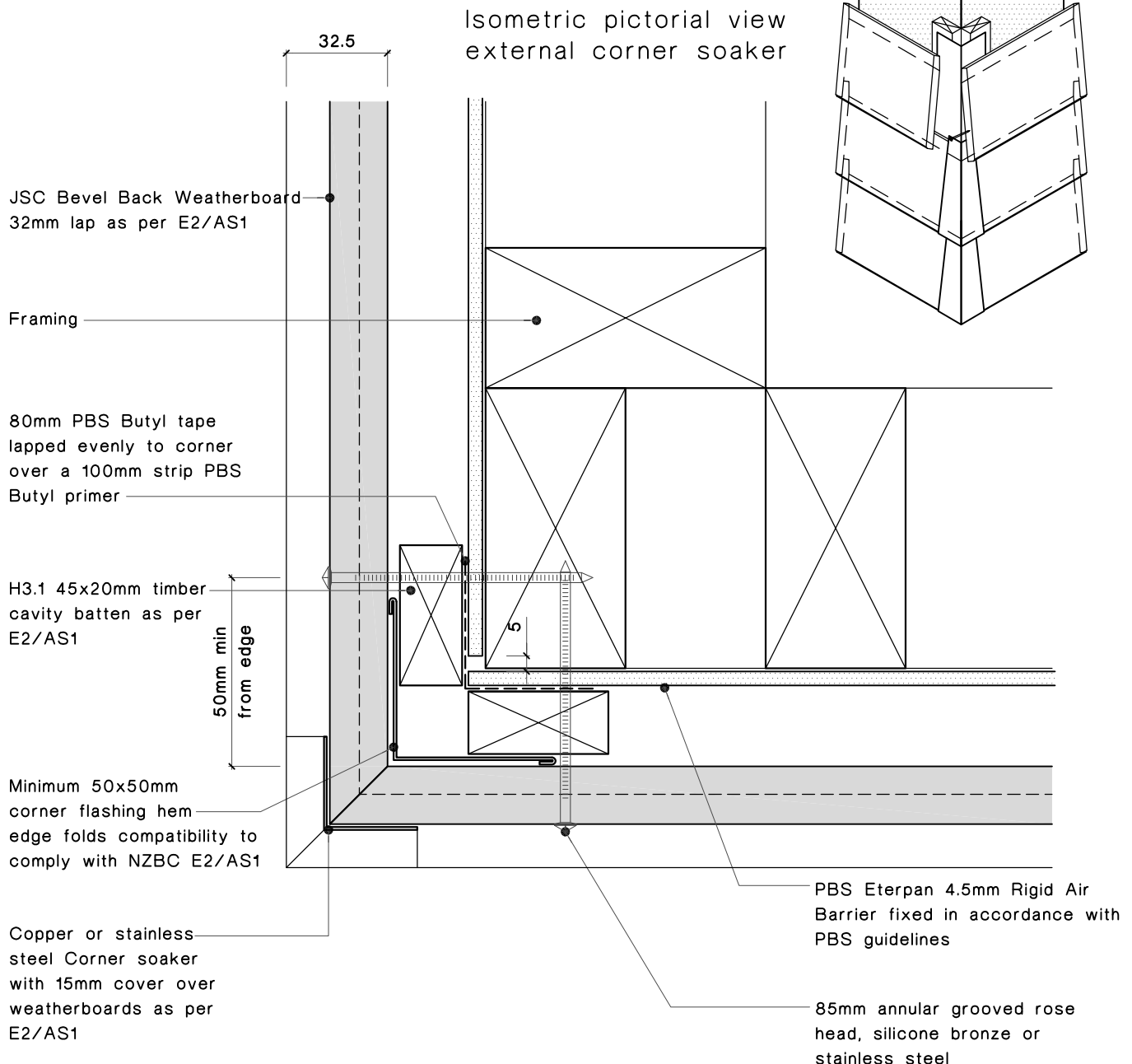


External corner detail

Bevel Back Weatherboards Architectural Profile

Notes:

- All nail fixings pre-drilled minimum 1mm diameter smaller than the nail gauge.
- All products to be precoated & cut edges to be sealed as per Branz Bulletin 411.
- All materials and fixtures are to comply with E2/AS1 Clause 2.2
- Provide PVC tape bond break between H3.2 battens and any flashing.
- Ensure bevelback weathergrooves to be in line with 32mm lap. Specific rebated bevelback profiles to be fitted with a minimum gap of 2mm at the overlap between boards.
- Option PBS Rigid Air Barrier to be sealed with SikaGuard 703w to manufacturers specification.



External corner detail

Bevel Back Weatherboards Architectural Profile

JSC Timber

102 Main Road, Kumeu, Auckland, New Zealand
PO Box 285 Kumeu, Auckland 0841, New Zealand

Note: Details may be subject to change without notification

T.09 412-7722

F.09 412-7723

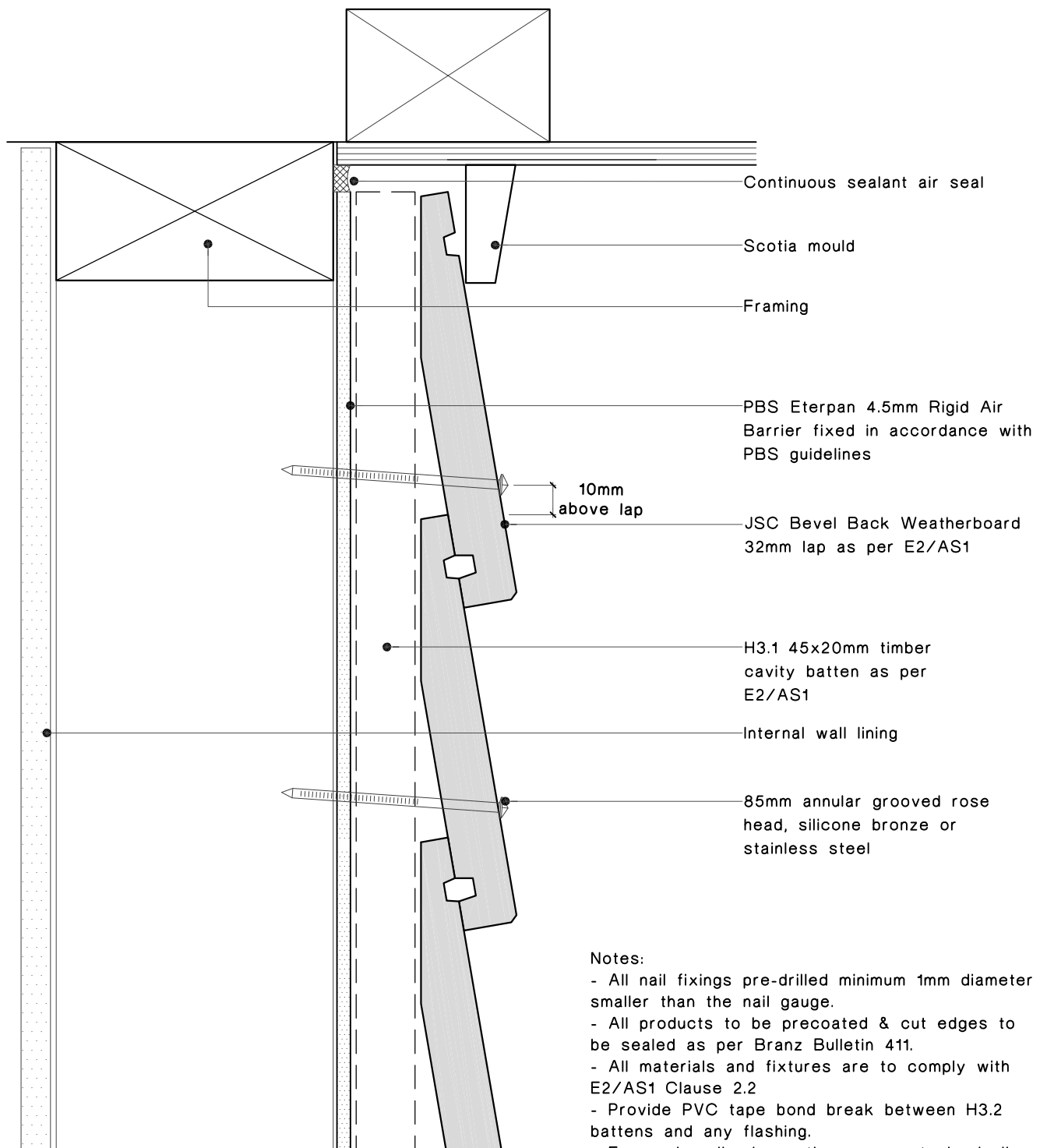
www.jsctimber.co.nz

Scale: 1:2

Date: 19/03/10

Dwg:

JB-RB-06



Notes:

- All nail fixings pre-drilled minimum 1mm diameter smaller than the nail gauge.
- All products to be pre-coated & cut edges to be sealed as per Branz Bulletin 411.
- All materials and fixtures are to comply with E2/AS1 Clause 2.2
- Provide PVC tape bond break between H3.2 battens and any flashing.
- Ensure bevelback weathergrooves to be in line with 32mm lap. Specific rebated bevelback profiles to be fitted with a minimum gap of 2mm at the overlap between boards.
- Option PBS Rigid Air Barrier to be sealed with SikaGuard 703w to manufacturers specification.

Top Plate to Soffit detail

Bevel Back Weatherboards Architectural Profile

JSC Timber

102 Main Road, Kumeu, Auckland, New Zealand
PO Box 285 Kumeu, Auckland 0841, New Zealand

T.09 412-7722
F.09 412-7723
www.jsctimber.co.nz

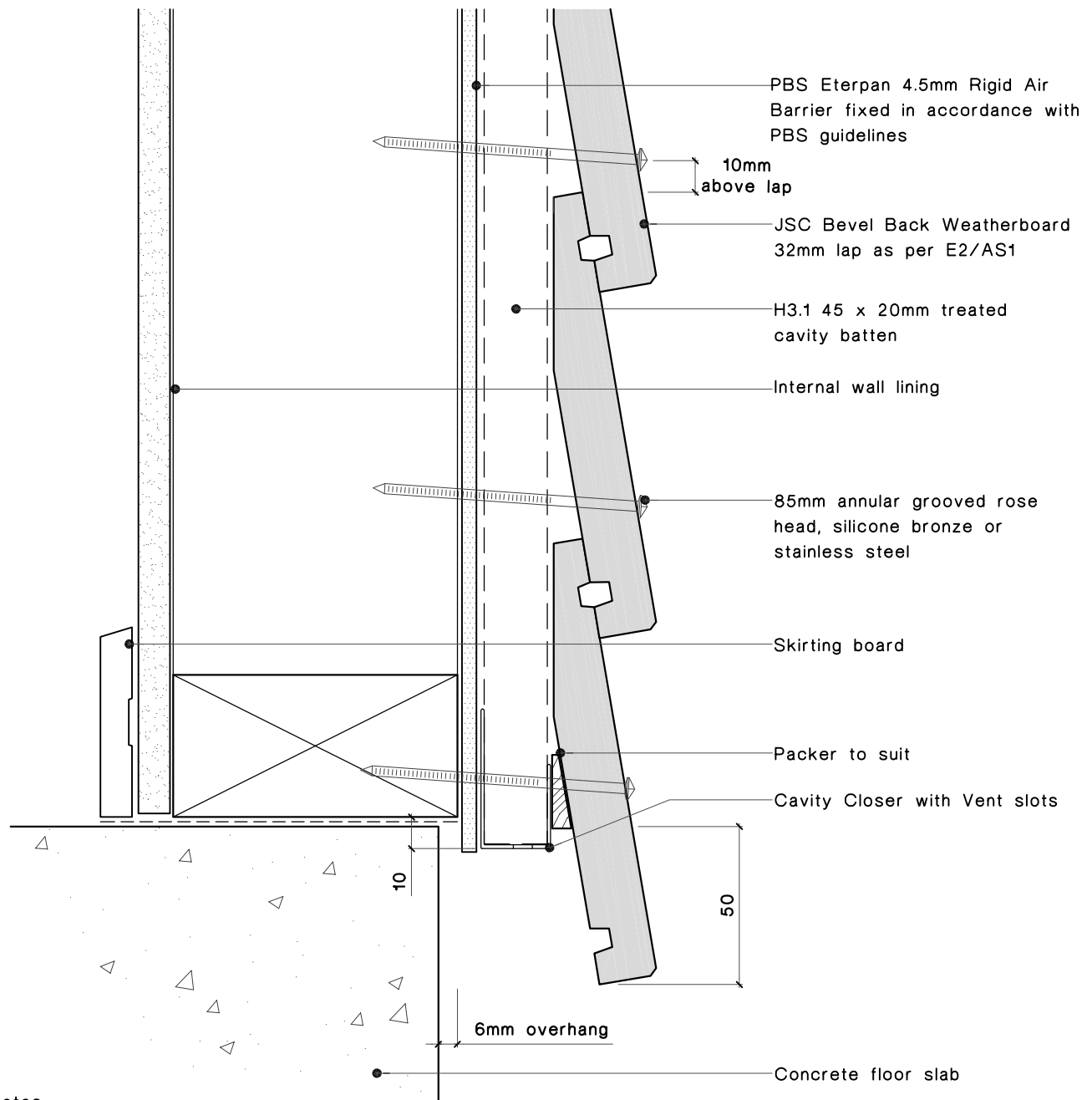
Note: Details may be subject to change without notification

Scale: 1:2

Date: 19/03/10

Dwg:

JB-RB-07



Notes:

- All nail fixings pre-drilled minimum 1mm diameter smaller than the nail gauge.
- All products to be pre-coated & cut edges to be sealed as per Branz Bulletin 411.
- All materials and fixtures are to comply with E2/AS1 Clause 2.2
- Provide PVC tape bond break between H3.2 battens and any flashing.
- Ensure bevelback weathergrooves to be in line with 32mm lap. Specific rebated bevelback profiles to be fitted with a minimum gap of 2mm at the overlap between boards.
- Option PBS Rigid Air Barrier to be sealed with SikaGuard 703w to manufacturers specification.

Bottom Plate detail

Bevel Back Weatherboards Architectural Profile

JSC Timber

102 Main Road, Kumeu, Auckland, New Zealand
 PO Box 285 Kumeu, Auckland 0841, New Zealand
 Note: Details may be subject to change without notification

T.09 412-7722
 F.09 412-7723
www.jsctimber.co.nz

Scale: 1:2

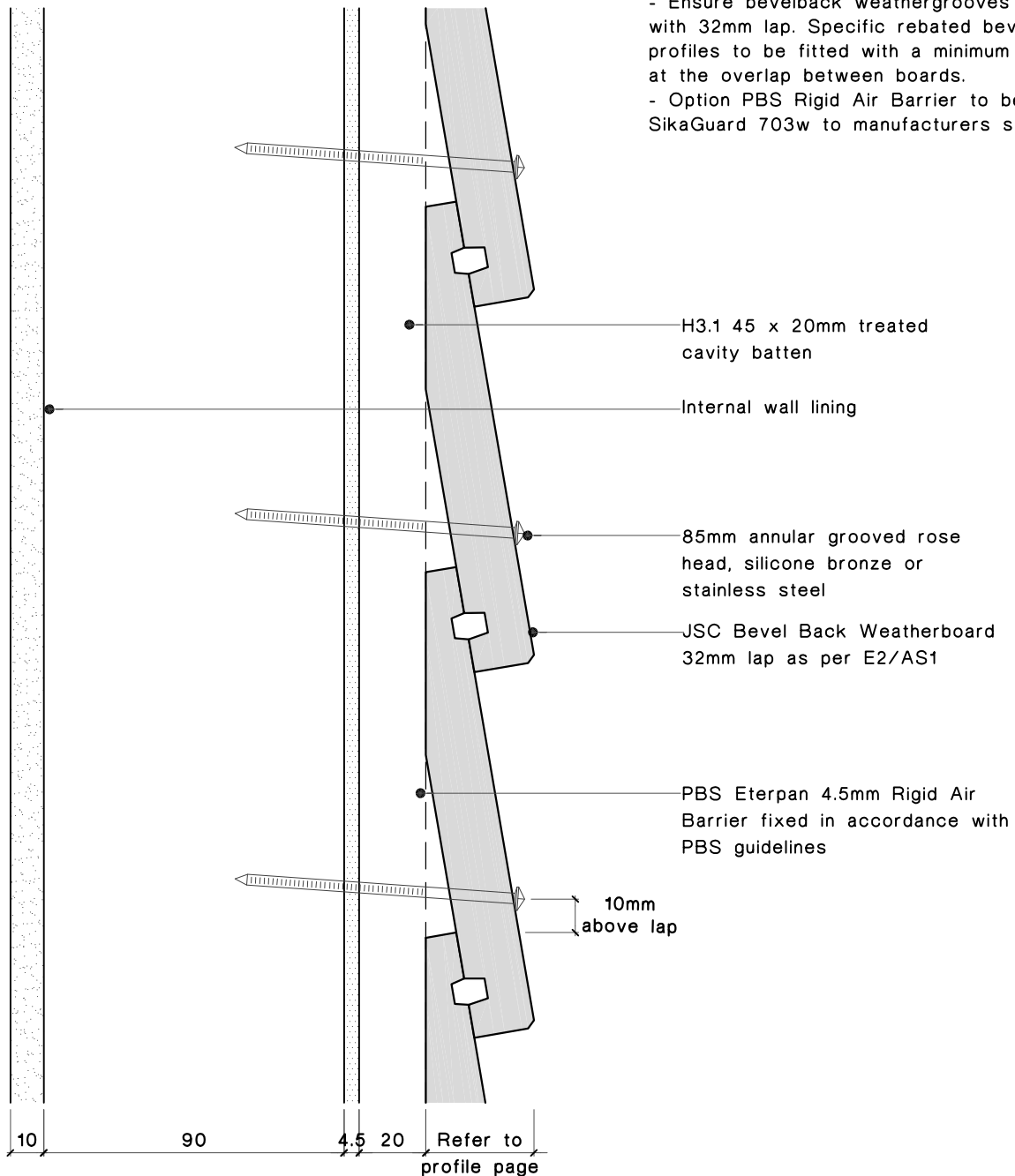
Date: 19/03/10

Dwg:

JB-RB-08

Notes:

- All nail fixings pre-drilled minimum 1mm diameter smaller than the nail gauge.
- All products to be pre-coated & cut edges to be sealed as per Branz Bulletin 411.
- All materials and fixtures are to comply with E2/AS1 Clause 2.2
- Provide PVC tape bond break between H3.2 battens and any flashing.
- Ensure bevelback weathergrooves to be in line with 32mm lap. Specific rebated bevelback profiles to be fitted with a minimum gap of 2mm at the overlap between boards.
- Option PBS Rigid Air Barrier to be sealed with SikaGuard 703w to manufacturers specification.



Sectional Detail

Bevel Back Weatherboards Architectural Profile

JSC Timber

102 Main Road, Kumeu, Auckland, New Zealand
 PO Box 285 Kumeu, Auckland 0841, New Zealand
 Note: Details may be subject to change without notification

T.09 412-7722
 F.09 412-7723
www.jsctimber.co.nz

Scale: 1:2

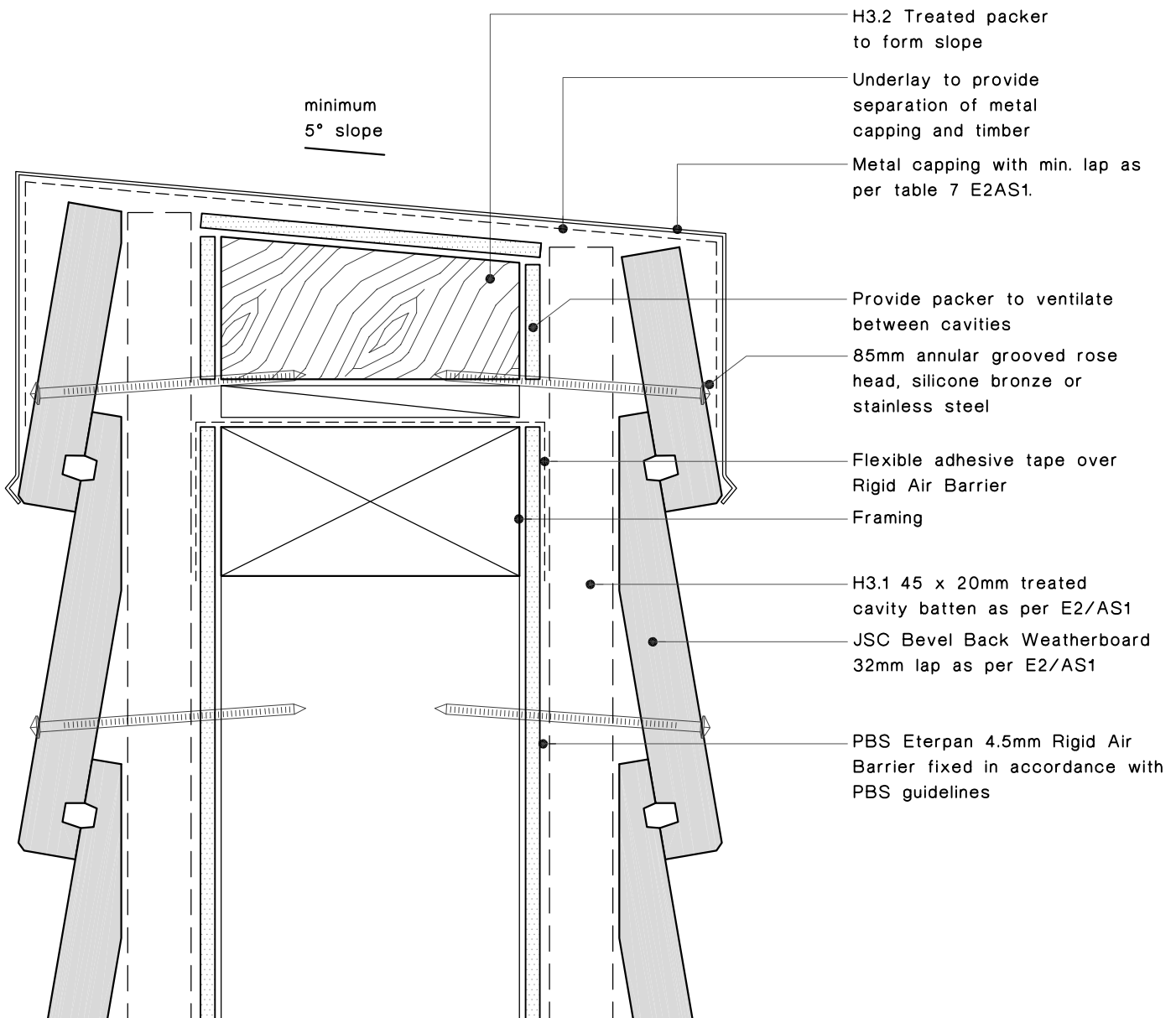
Date: 19/03/10

Dwg:

JB-RB-09

Notes:

- All nail fixings pre-drilled minimum 1mm diameter smaller than the nail gauge.
- All products to be precoated & cut edges to be sealed as per Branz Bulletin 411.
- All materials and fixtures are to comply with E2/AS1 Clause 2.2
- Provide PVC tape bond break between H3.2 battens and any flashing.
- Ensure bevelback weathergrooves to be in line with 32mm lap. Specific rebated bevelback profiles to be fitted with a minimum gap of 2mm at the overlap between boards.
- Option PBS Rigid Air Barrier to be sealed with SikaGuard 703w to manufacturers specification.



Parapet detail

Bevel Back Weatherboards Architectural Profile

JSC Timber

102 Main Road, Kumeu, Auckland, New Zealand
 PO Box 285 Kumeu, Auckland 0841, New Zealand
 Note: Details may be subject to change without notification

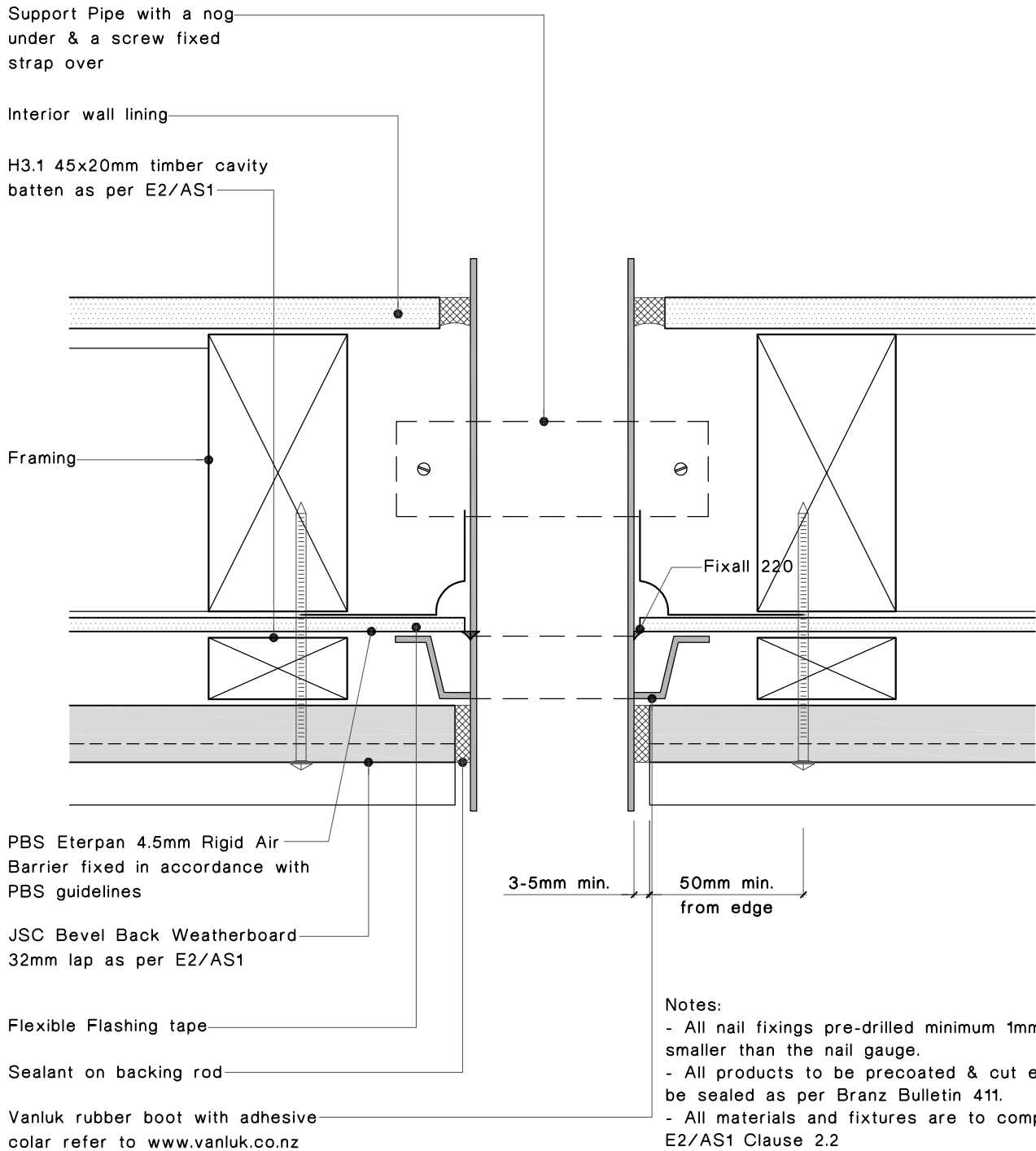
T.09 412-7722
 F.09 412-7723
www.jsctimber.co.nz

Scale: 1:2

Date: 19/03/10

Dwg:

JB-RB-10



Notes:

- All nail fixings pre-drilled minimum 1mm diameter smaller than the nail gauge.
- All products to be pre-coated & cut edges to be sealed as per Branz Bulletin 411.
- All materials and fixtures are to comply with E2/AS1 Clause 2.2
- Provide PVC tape bond break between H3.2 battens and any flashing.
- Ensure bevelback weathergrooves to be in line with 32mm lap. Specific rebated bevelback profiles to be fitted with a minimum gap of 2mm at the overlap between boards.
- Option PBS Rigid Air Barrier to be sealed with SikaGuard 703w to manufacturers specification.

Pipe Penetration detail

Rusticated Weatherboards Architectural Profile

JSC Timber

102 Main Road, Kumeu, Auckland, New Zealand
PO Box 285 Kumeu, Auckland 0841, New Zealand
Note: Details may be subject to change without notification

T.09 412-7722
F.09 412-7723
www.jsctimber.co.nz

Scale: 1:2

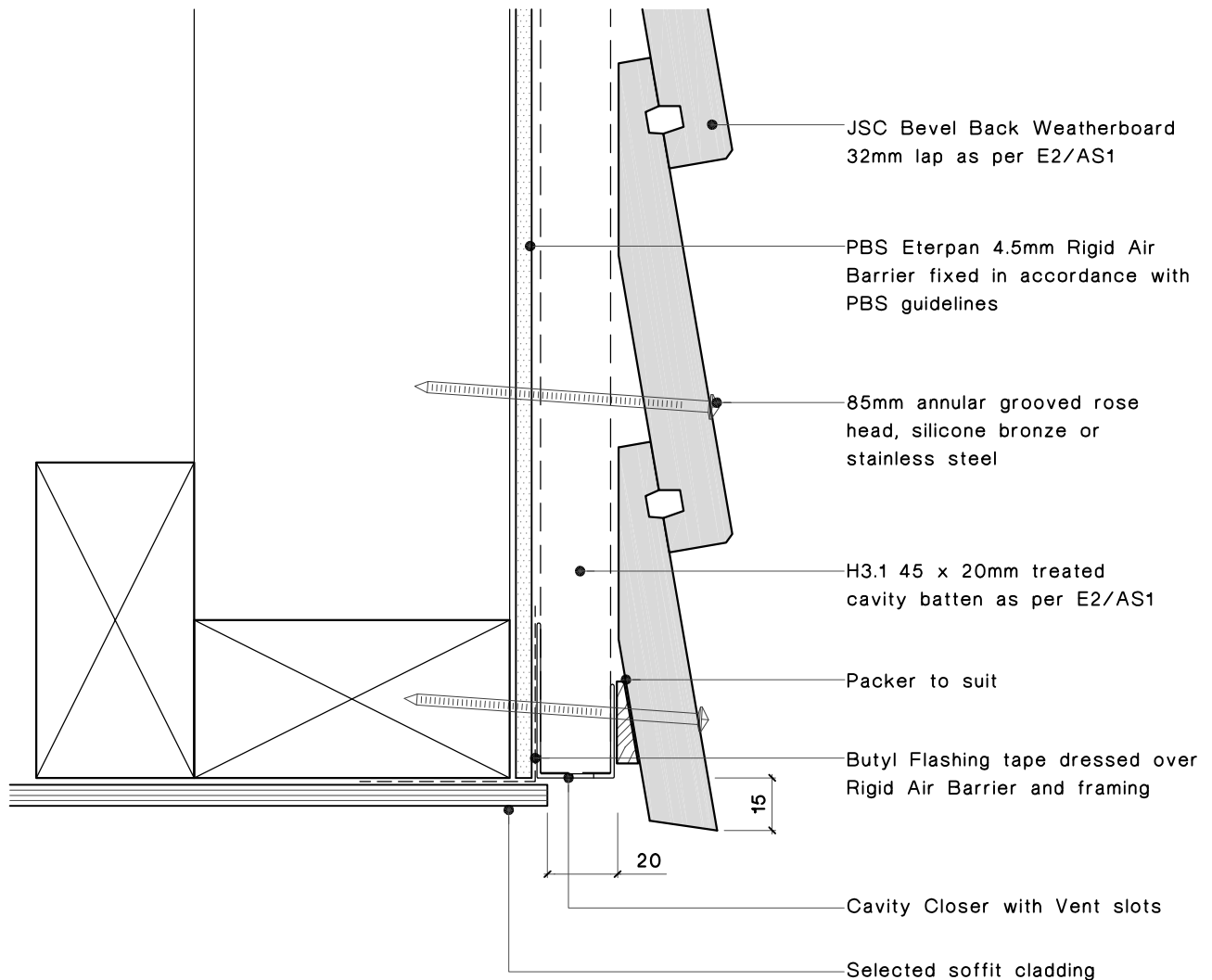
Date: 19/03/10

Dwg:

JR-RB-11

Notes:

- All nail fixings pre-drilled minimum 1mm diameter smaller than the nail gauge.
- All products to be precoated & cut edges to be sealed as per Branz Bulletin 411.
- All materials and fixtures are to comply with E2/AS1 Clause 2.2
- Provide PVC tape bond break between H3.2 battens and any flashing.
- Ensure bevelback weathergrooves to be in line with 32mm lap. Specific rebated bevelback profiles to be fitted with a minimum gap of 2mm at the overlap between boards.
- Option PBS Rigid Air Barrier to be sealed with SikaGuard 703w to manufacturers specification.



Soffit detail

Bevel Back Weatherboards Architectural Profile

JSC Timber

102 Main Road, Kumeu, Auckland, New Zealand
 PO Box 285 Kumeu, Auckland 0841, New Zealand
 Note: Details may be subject to change without notification

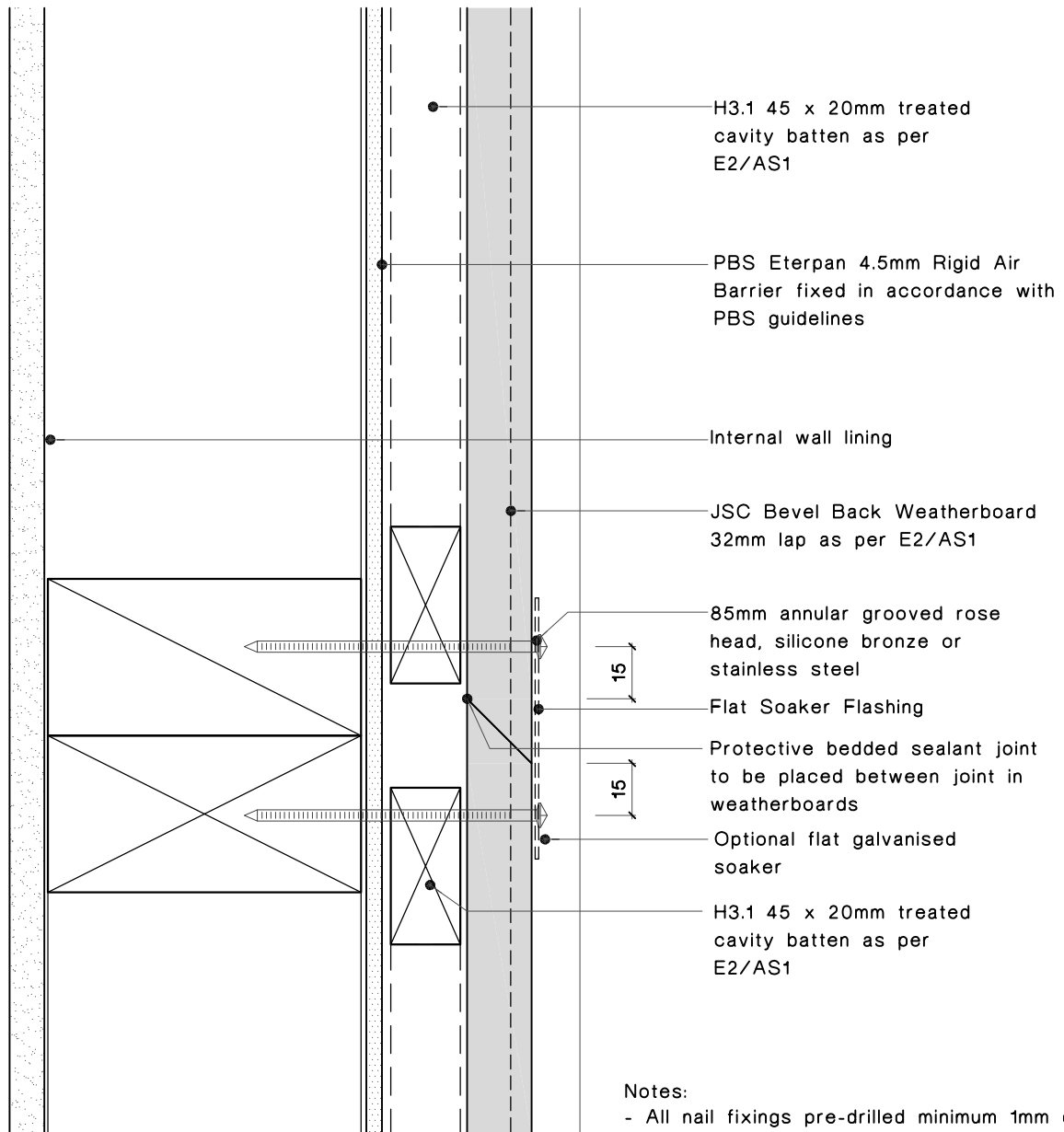
T.09 412-7722
 F.09 412-7723
www.jsctimber.co.nz

Scale: 1:2

Date: 19/03/10

Dwg:

JB-RB-12



Notes:

- All nail fixings pre-drilled minimum 1mm diameter smaller than the nail gauge.
- All products to be pre-coated & cut edges to be sealed as per Branz Bulletin 411.
- All materials and fixtures are to comply with E2/AS1 Clause 2.2
- Provide PVC tape bond break between H3.2 battens and any flashing.
- Ensure bevelback weathergrooves to be in line with 32mm lap. Specific rebated bevelback profiles to be fitted with a minimum gap of 2mm at the overlap between boards.
- Option PBS Rigid Air Barrier to be sealed with SikaGuard 703w to manufacturers specification.

Scarf Jointing detail

Bevel Back Weatherboards Architectural Profile

JSC Timber

102 Main Road, Kumeu, Auckland, New Zealand
PO Box 285 Kumeu, Auckland 0841, New Zealand
Note: Details may be subject to change without notification

T.09 412-7722
F.09 412-7723
www.jsctimber.co.nz

Scale: 1:2

Date: 19/03/10

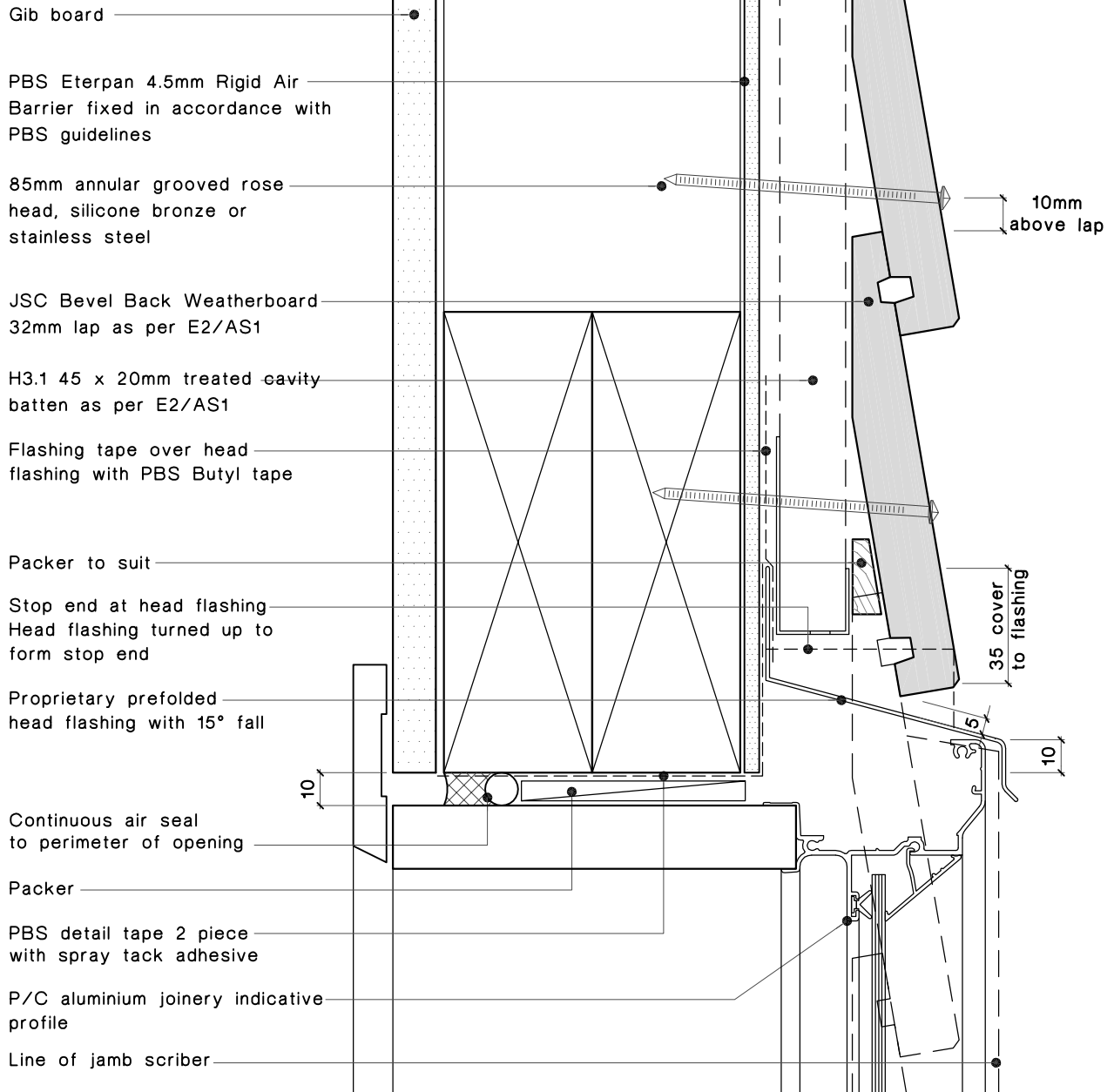
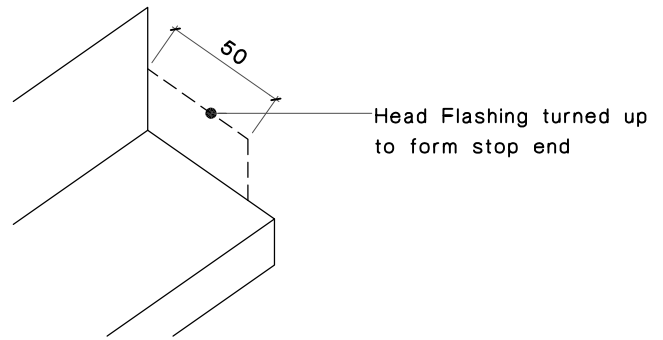
Dwg:

JB-RB-14

Notes:

- All nail fixings pre-drilled minimum 1mm diameter smaller than the nail gauge.
- All products to be precoated & cut edges to be sealed as per Branz Bulletin 411.
- All materials and fixtures are to comply with E2/AS1 Clause 2.2
- Provide PVC tape bond break between H3.2 battens and any flashing.
- Ensure bevelback weathergrooves to be in line with 32mm lap. Specific rebated bevelback profiles to be fitted with a minimum gap of 2mm at the overlap between boards.
- Option PBS Rigid Air Barrier to be sealed with SikaGuard 703w to manufacturers specification.

JSC BevelClad



Aluminium Head detail

Bevel Back Weatherboards Architectural Profile

JSC Timber

102 Main Road, Kumeu, Auckland, New Zealand
PO Box 285 Kumeu, Auckland 0841, New Zealand
Note: Details may be subject to change without notification

T.09 412-7722
F.09 412-7723
www.jsctimber.co.nz

Scale: 1:2

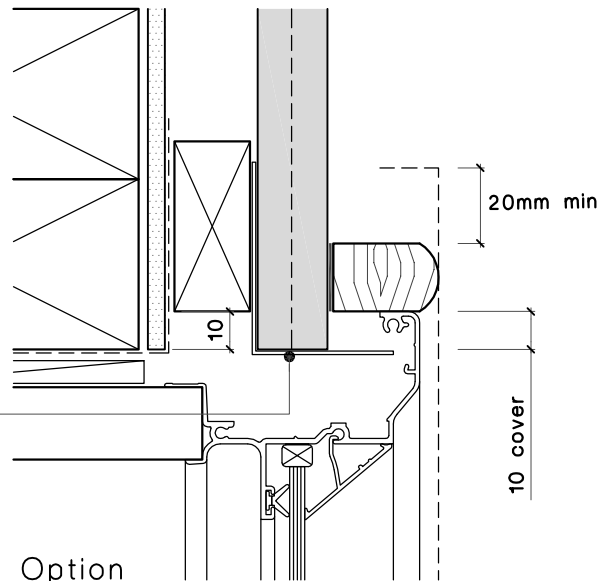
Date: 19/03/10

Dwg:

JB-RB-20-H

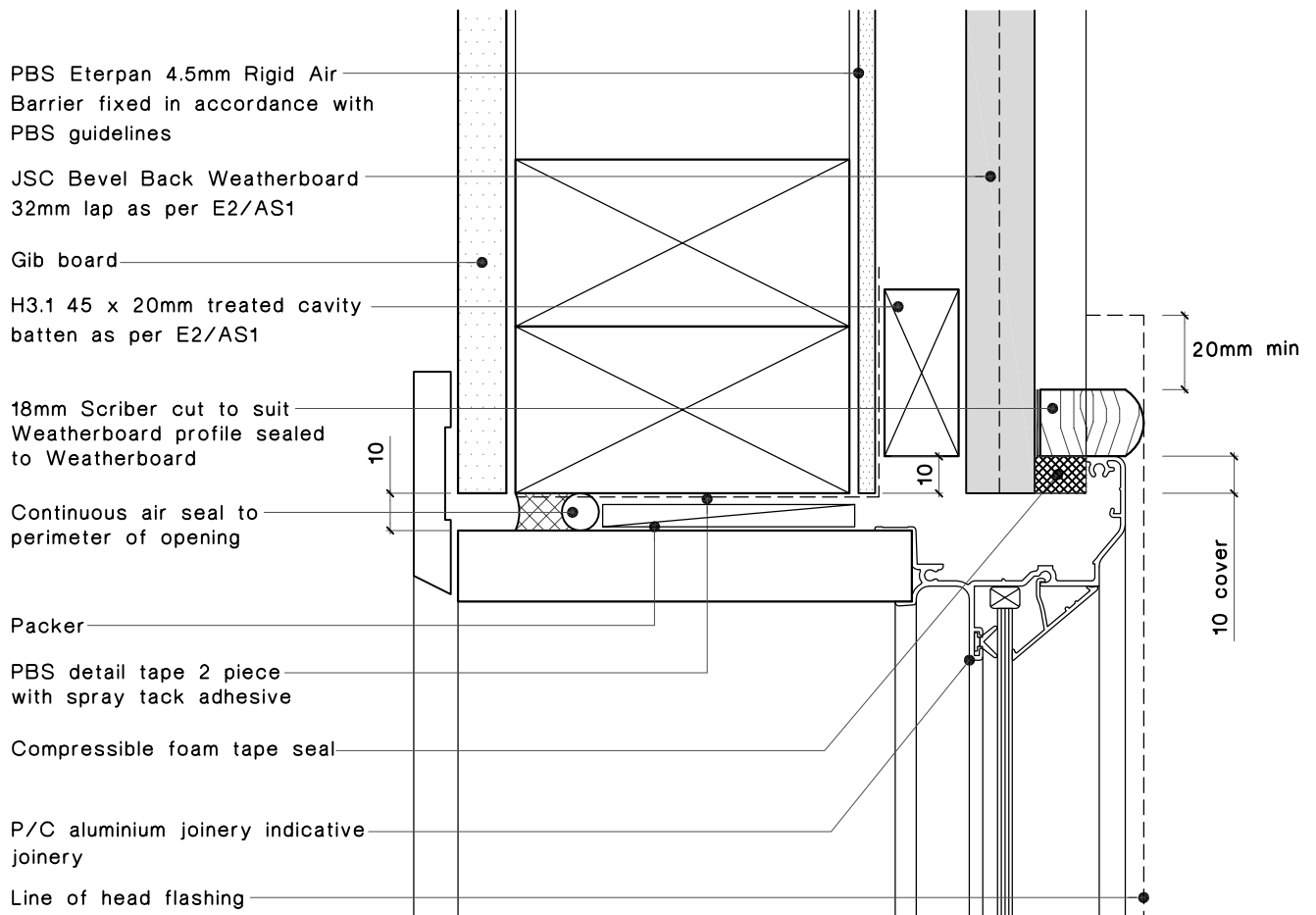
Notes:

- All nail fixings pre-drilled minimum 1mm diameter smaller than the nail gauge.
- All products to be pre-coated & cut edges to be sealed as per Branz Bulletin 411.
- All materials and fixtures are to comply with E2/AS1 Clause 2.2
- Provide PVC tape bond break between H3.2 battens and any flashing.
- Ensure bevelback weathergrooves to be in line with 32mm lap. Specific rebated bevelback profiles to be fitted with a minimum gap of 2mm at the overlap between boards.
- Option PBS Rigid Air Barrier to be sealed with SikaGuard 703w to manufacturers specification.



Optional: folded 0.9mm jamb flashing. Allow to return flashing to suit weatherboard depth

Alternate Option



Aluminium Jamb detail

Bevel Back Weatherboards Architectural Profile

JSC Timber

102 Main Road, Kumeu, Auckland, New Zealand
PO Box 285 Kumeu, Auckland 0841, New Zealand

Note: Details may be subject to change without notification

T.09 412-7722

F.09 412-7723

www.jsctimber.co.nz

Scale: 1:2

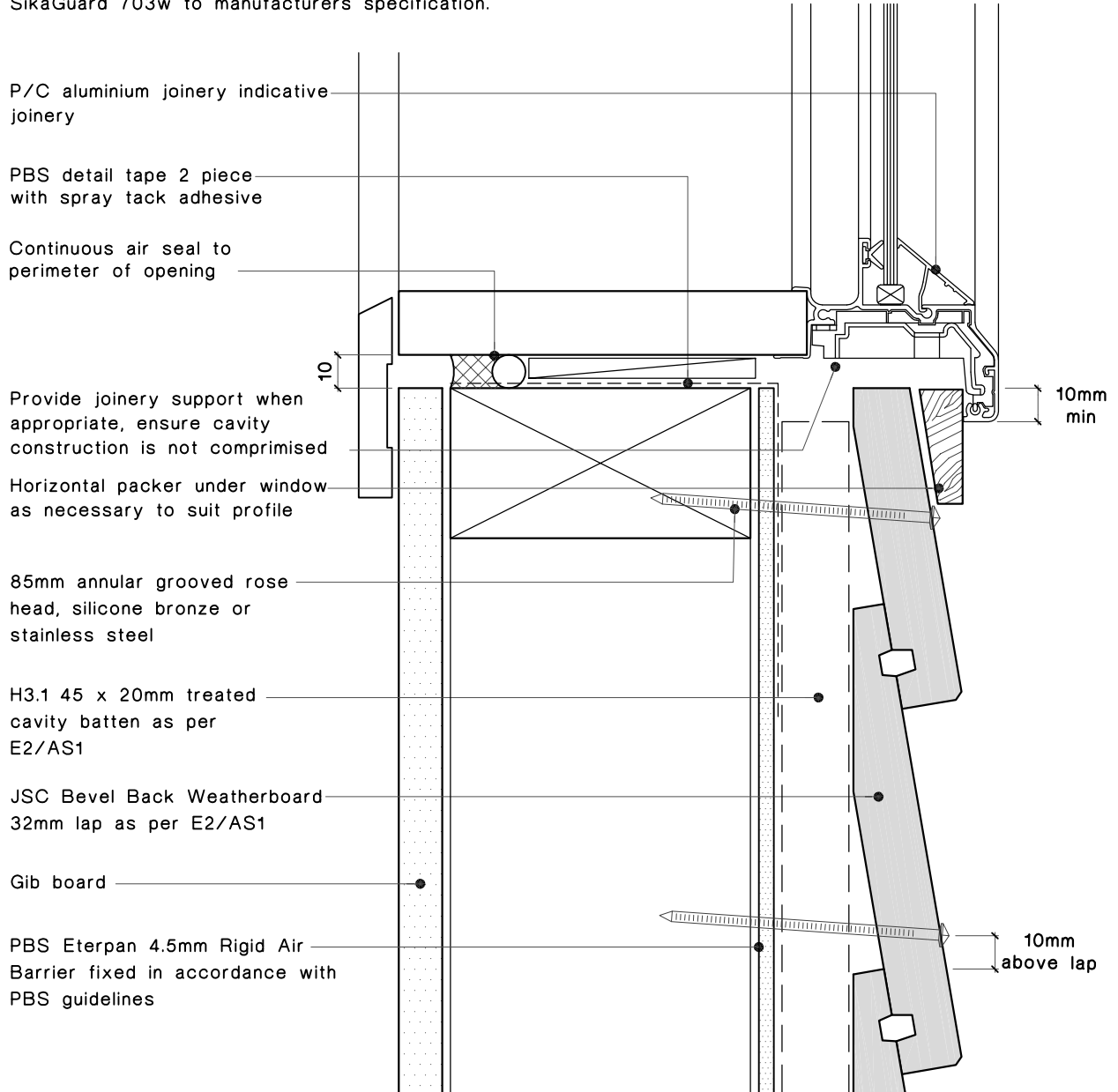
Date: 19/03/10

Dwg:

JB-RB-21-J

Notes:

- All nail fixings pre-drilled minimum 1mm diameter smaller than the nail gauge.
- All products to be precoated & cut edges to be sealed as per Branz Bulletin 411.
- All materials and fixtures are to comply with E2/AS1 Clause 2.2
- Provide PVC tape bond break between H3.2 battens and any flashing.
- Ensure bevelback weathergrooves to be in line with 32mm lap. Specific rebated bevelback profiles to be fitted with a minimum gap of 2mm at the overlap between boards.
- Option PBS Rigid Air Barrier to be sealed with SikaGuard 703w to manufacturers specification.



Aluminium Sill detail

Bevel Back Weatherboards Architectural Profile

JSC Timber

102 Main Road, Kumeu, Auckland, New Zealand
PO Box 285 Kumeu, Auckland 0841, New Zealand

Note: Details may be subject to change without notification

T.09 412-7722

F.09 412-7723

www.jsctimber.co.nz

Scale: 1:2

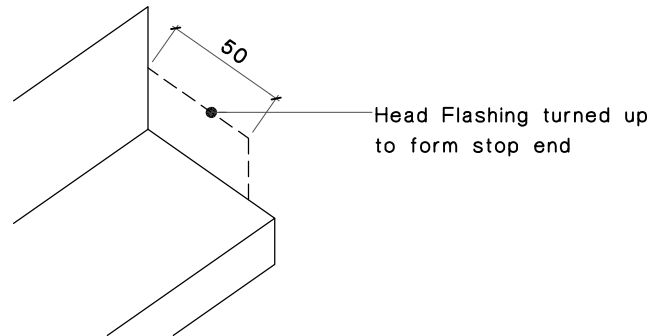
Date: 19/03/10

Dwg:

JB-RB-22-S

Notes:

- All nail fixings pre-drilled minimum 1mm diameter smaller than the nail gauge.
- All products to be precoated & cut edges to be sealed as per Branz Bulletin 411.
- All materials and fixtures are to comply with E2/AS1 Clause 2.2
- Provide PVC tape bond break between H3.2 battens and any flashing.
- Ensure bevelback weathergrooves to be in line with 32mm lap. Specific rebated bevelback profiles to be fitted with a minimum gap of 2mm at the overlap between boards.
- Option PBS Rigid Air Barrier to be sealed with SikaGuard 703w to manufacturers specification.



PBS Eterpan 4.5mm Rigid Air Barrier fixed in accordance with PBS guidelines

JSC Bevel Back Weatherboard
32mm lap as per E2/AS1

H3.1 45 x 20mm treated cavity batten as per E2/AS1

Gib board

Flashing tape over head flashing with PBS Butyl tape

85mm annular grooved rose head, silicone bronze or stainless steel

Stop end at head flashing
Head flashing turned up to form stop end

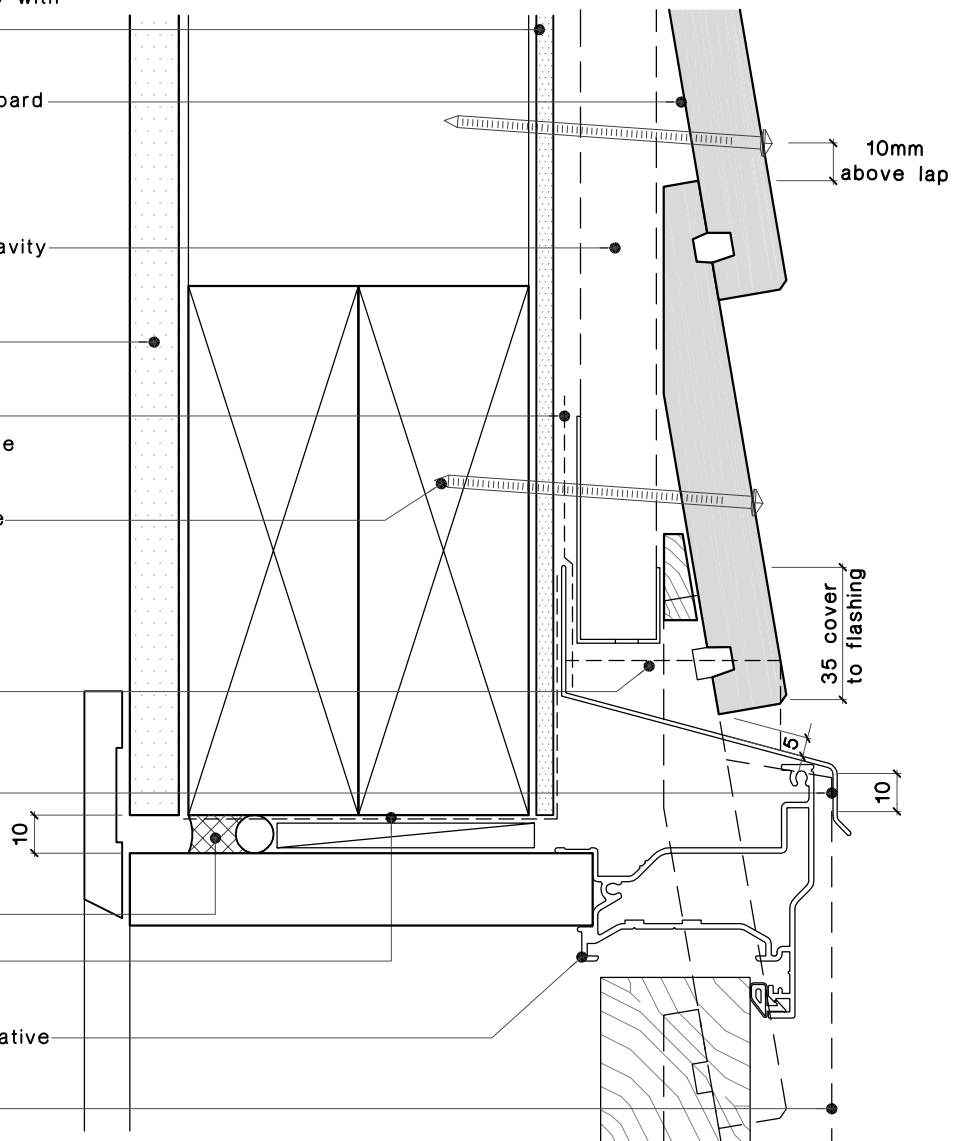
Proprietary prefolded head flashing with 15° fall

Continuous air seal to perimeter of opening

PBS detail tape 2 piece with spray tack adhesive

P/C aluminium joinery indicative profile

Line of jamb scribe



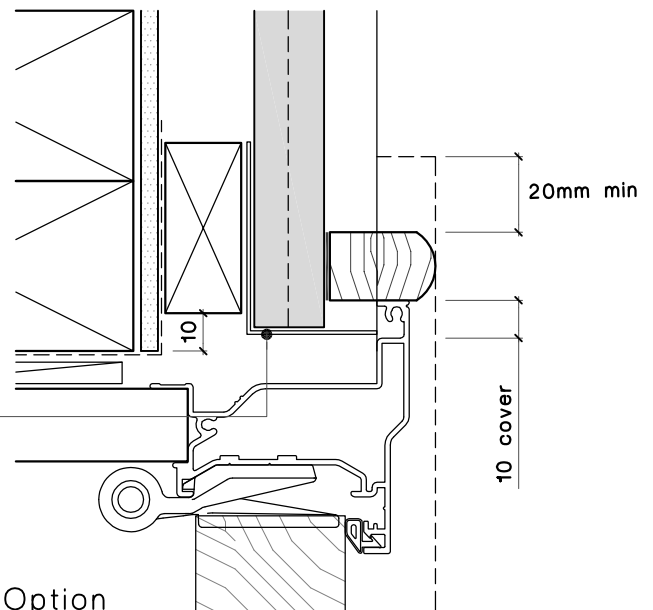
Aluminium Door Head detail

Bevel Back Weatherboards Architectural Profile

Notes:

- All nail fixings pre-drilled minimum 1mm diameter smaller than the nail gauge.
- All products to be precoated & cut edges to be sealed as per Branz Bulletin 411.
- All materials and fixtures are to comply with E2/AS1 Clause 2.2
- Provide PVC tape bond break between H3.2 battens and any flashing.
- Ensure bevelback weathergrooves to be in line with 32mm lap. Specific rebated bevelback profiles to be fitted with a minimum gap of 2mm at the overlap between boards.
- Option PBS Rigid Air Barrier to be sealed with SikaGuard 703w to manufacturers specification.

Optional: folded 0.9mm jamb flashing. Allow to return flashing to suit weatherboard depth



Alternate Option

JSC Bevel Back Weatherboard
32mm lap as per E2/AS1

PBS Eterpan 4.5mm Rigid Air
Barrier fixed in accordance with
PBS guidelines

H3.1 45x20mm timber cavity
batten as per E2/AS1

Gib board

18mm Scriber cut to suit
Weatherboard profile sealed
to Weatherboard

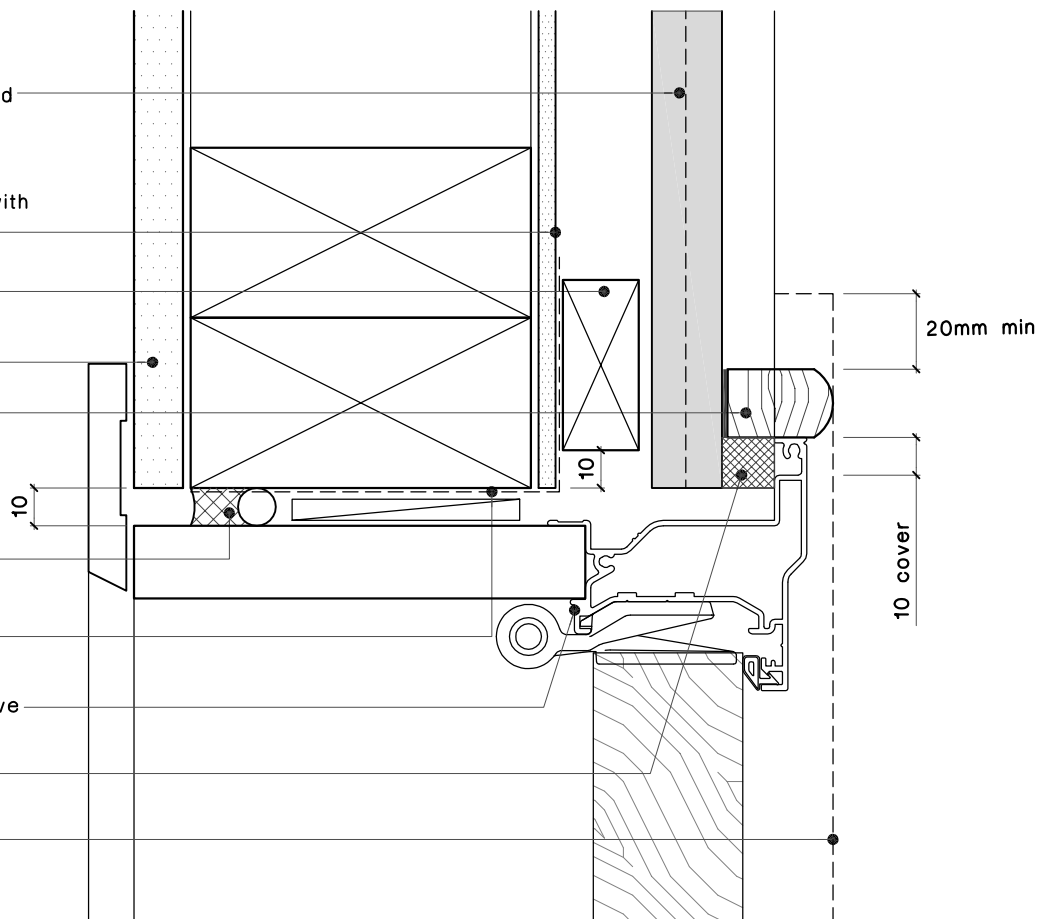
Continuous air seal to
perimeter of opening

PBS detail tape 2 piece
with spray tack adhesive

P/C aluminium joinery indicative
profile

Compressible foam tape seal

Line of head flashing above



Aluminium Door Jamb detail

Bevel Back Weatherboards Architectural Profile

JSC Timber

102 Main Road, Kumeu, Auckland, New Zealand
PO Box 285 Kumeu, Auckland 0841, New Zealand

Note: Details may be subject to change without notification

T.09 412-7722

F.09 412-7723

www.jsctimber.co.nz

Scale: 1:2

Date: 19/03/10

Dwg:

JB-RB-24-J