

JSCTimber

JSCBevelClad

Bevel Back Weatherboard System

Cavity on Wrap

www.jsctimber.co.nz

www.cedarspec.co.nz

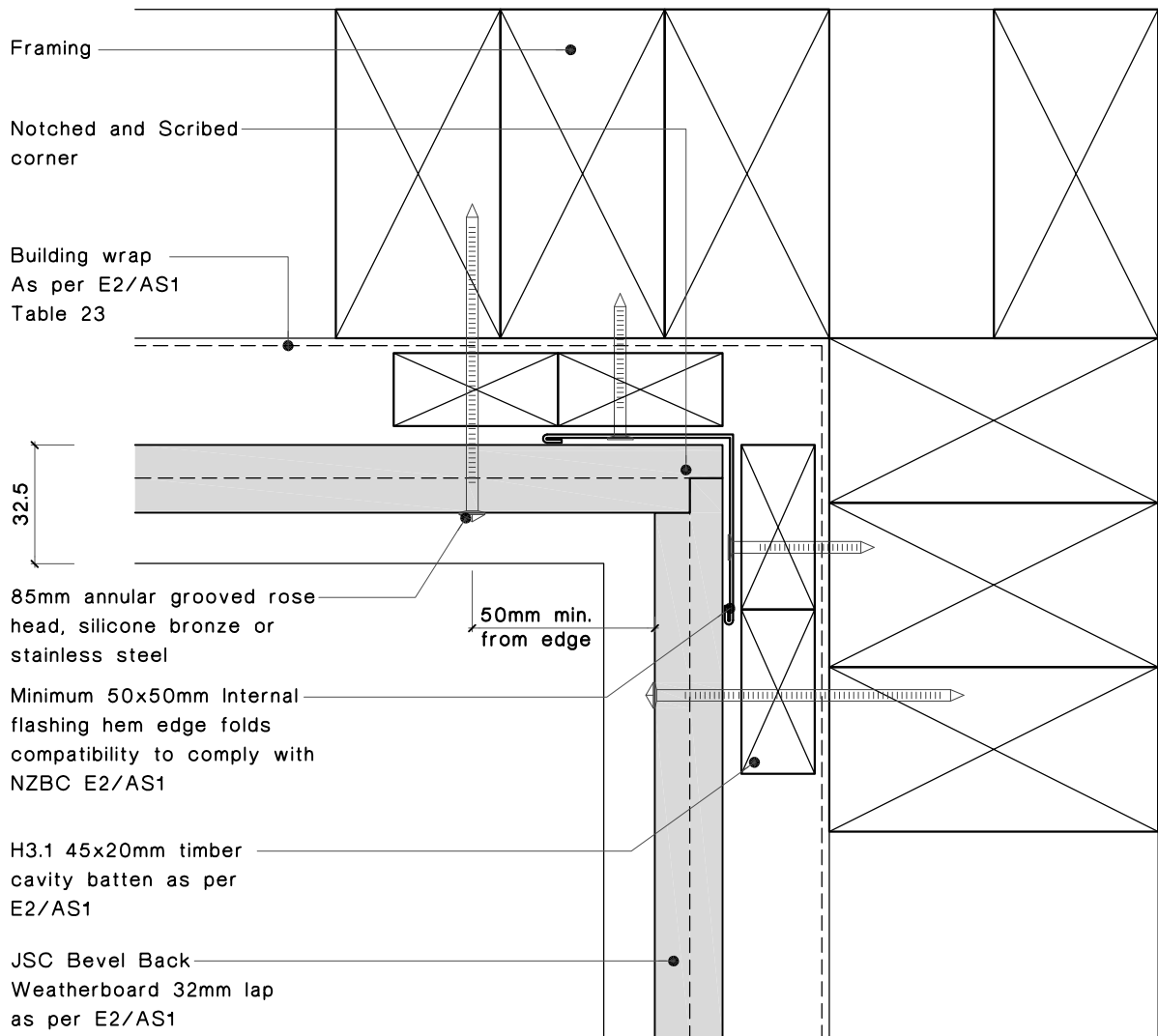
JSCCedarShield
Factory Applied Coating System

BEVEL BACK WEATHERBOARD DRAWING INDEX - JB-C-00

Product	Application	Detail	Suffix	Description	Issued
JB	C	Index		Drawing Index	06.08.2009
JB	IG	01		Product installation guidelines	25.02.2010
JB	IG	02		Product installation guidelines	25.02.2010
JB	C	KN		General installation keynotes	06.08.2009
JB	C	01		Internal corner detail - L flashing	06.08.2009
JB	C	02		Internal corner detail - timber corner mould	06.08.2009
JB	C	05		External corner detail - cover boards	06.08.2009
JB	C	06		External corner detail - corner soaker flashing	06.08.2009
JB	C	07		Top Plate to Soffit detail	06.08.2009
JB	C	08		Bottom Plate detail	06.08.2009
JB	C	09		Sectional detail	22.12.2010
JB	C	10		Parapet detail	06.08.2009
JB	C	11		Pipe Penetration detail	06.08.2009
JB	C	12		Soffit detail	06.08.2009
JB	C	14		Scarf Jointing detail	06.08.2009
JB	C	20	H	Aluminium Window Head detail	06.08.2009
JB	C	21	J	Aluminium Window Jamb detail	06.08.2009
JB	C	22	S	Aluminium Window Sill detail	06.08.2009
JB	C	23	H	Aluminium Door Head detail	06.08.2009
JB	C	24	J	Aluminium Door Jamb detail	06.08.2009

Notes:

- All nail fixings pre-drilled minimum 1mm diameter smaller than the nail gauge.
- All products to be precoated & cut edges to be sealed as per Branz Bulletin 411.
- All materials and fixtures are to comply with E2/AS1 Clause 2.2
- Provide PVC tape bond break between H3.2 battens and any flashing.
- Ensure bevelback weathergrooves to be in line with 32mm lap. Specific rebated bevelback profiles to be fitted with a minimum gap of 2mm at the overlap between boards.



Internal corner detail

Bevel Back Weatherboards Architectural Profile

JSC Timber

102 Main Road, Kumeu, Auckland, New Zealand
PO Box 285 Kumeu, Auckland 0841, New Zealand

T.09 412-7722
F.09 412-7723
www.jsctimber.co.nz

Note: Details may be subject to change without notification

Scale: 1:2

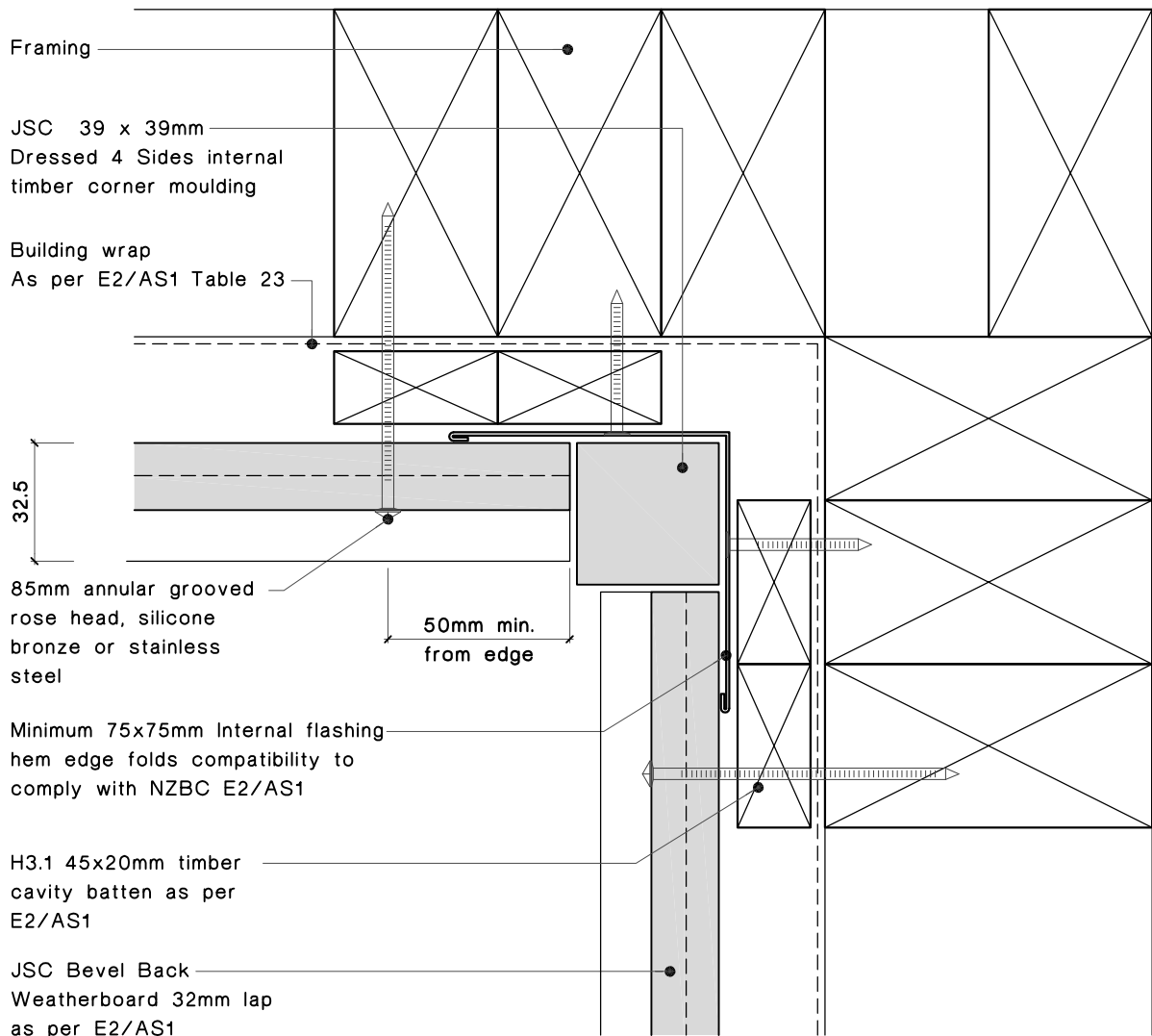
Date: 06/08/09

Dwg:

JB-C-01

Notes:

- All nail fixings pre-drilled minimum 1mm diameter smaller than the nail gauge.
- All products to be pre-coated & cut edges to be sealed as per Branz Bulletin 411.
- All materials and fixtures are to comply with E2/AS1 Clause 2.2
- Provide PVC tape bond break between H3.2 battens and any flashing.
- Ensure bevelback weathergrooves to be in line with 32mm lap. Specific rebated bevelback profiles to be fitted with a minimum gap of 2mm at the overlap between boards.



Internal corner detail

Bevel Back Weatherboards Architectural Profile

JSC Timber

102 Main Road, Kumeu, Auckland, New Zealand
PO Box 285 Kumeu, Auckland 0841, New Zealand

Note: Details may be subject to change without notification

T.09 412-7722

F.09 412-7723

www.jsctimber.co.nz

Scale: 1:2

Date: 06/08/09

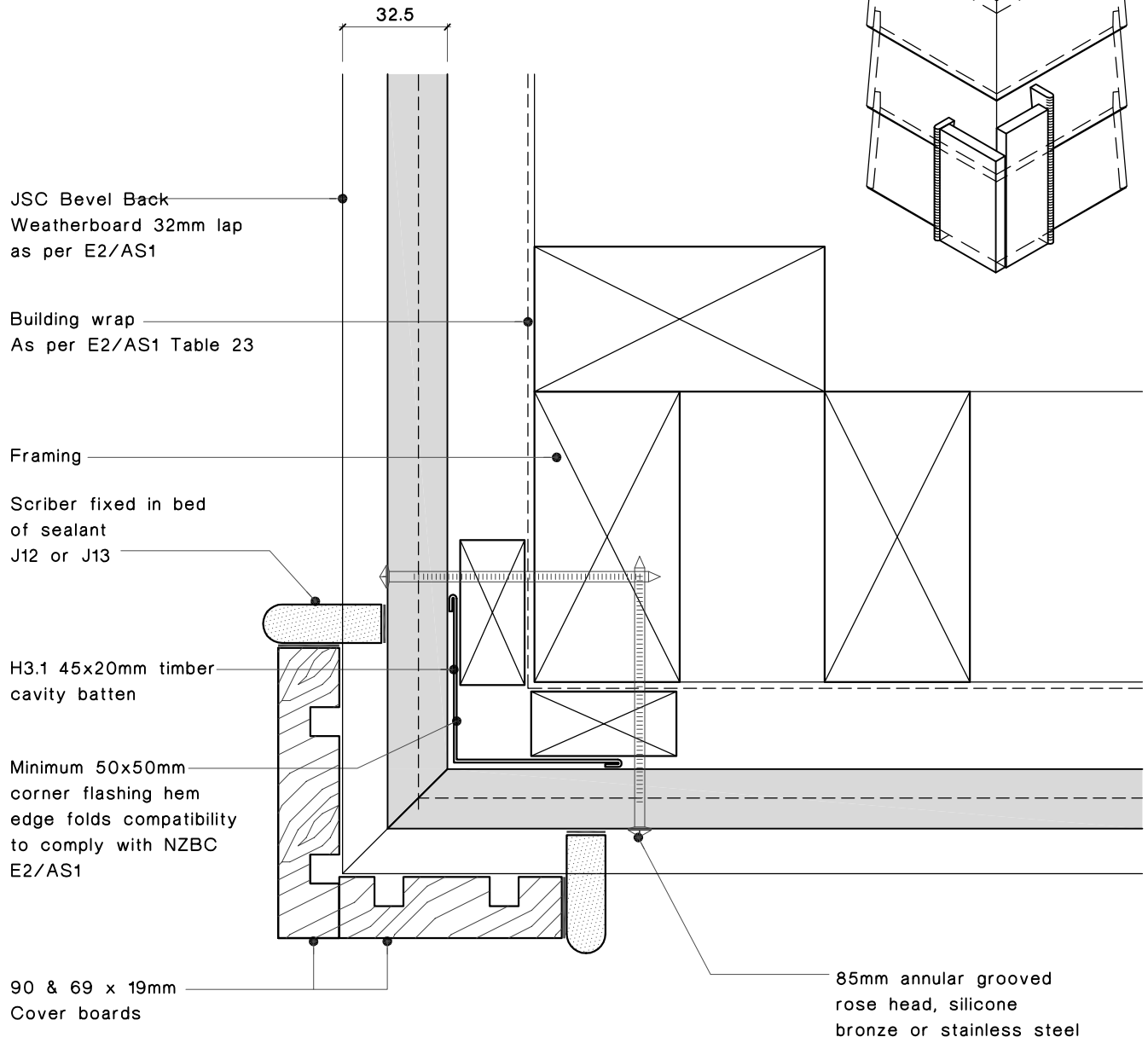
Dwg:

JB-C-02

Notes:

- All nail fixings pre-drilled minimum 1mm diameter smaller than the nail gauge.
- All products to be precoated & cut edges to be sealed as per Branz Bulletin 411.
- All materials and fixtures are to comply with E2/AS1 Clause 2.2
- Provide PVC tape bond break between H3.2 battens and any flashing.
- Ensure bevelback weathergrooves to be in line with 32mm lap. Specific rebated bevelback profiles to be fitted with a minimum gap of 2mm at the overlap between boards.

Isometric Pictorial View External Boxed Corner



External corner detail

Bevel Back Weatherboards Architectural Profile

JSC Timber

102 Main Road, Kumeu, Auckland, New Zealand
 PO Box 285 Kumeu, Auckland 0841, New Zealand
 Note: Details may be subject to change without notification

T.09 412-7722
 F.09 412-7723
www.jsctimber.co.nz

Scale: 1:2

Date: 06/08/09

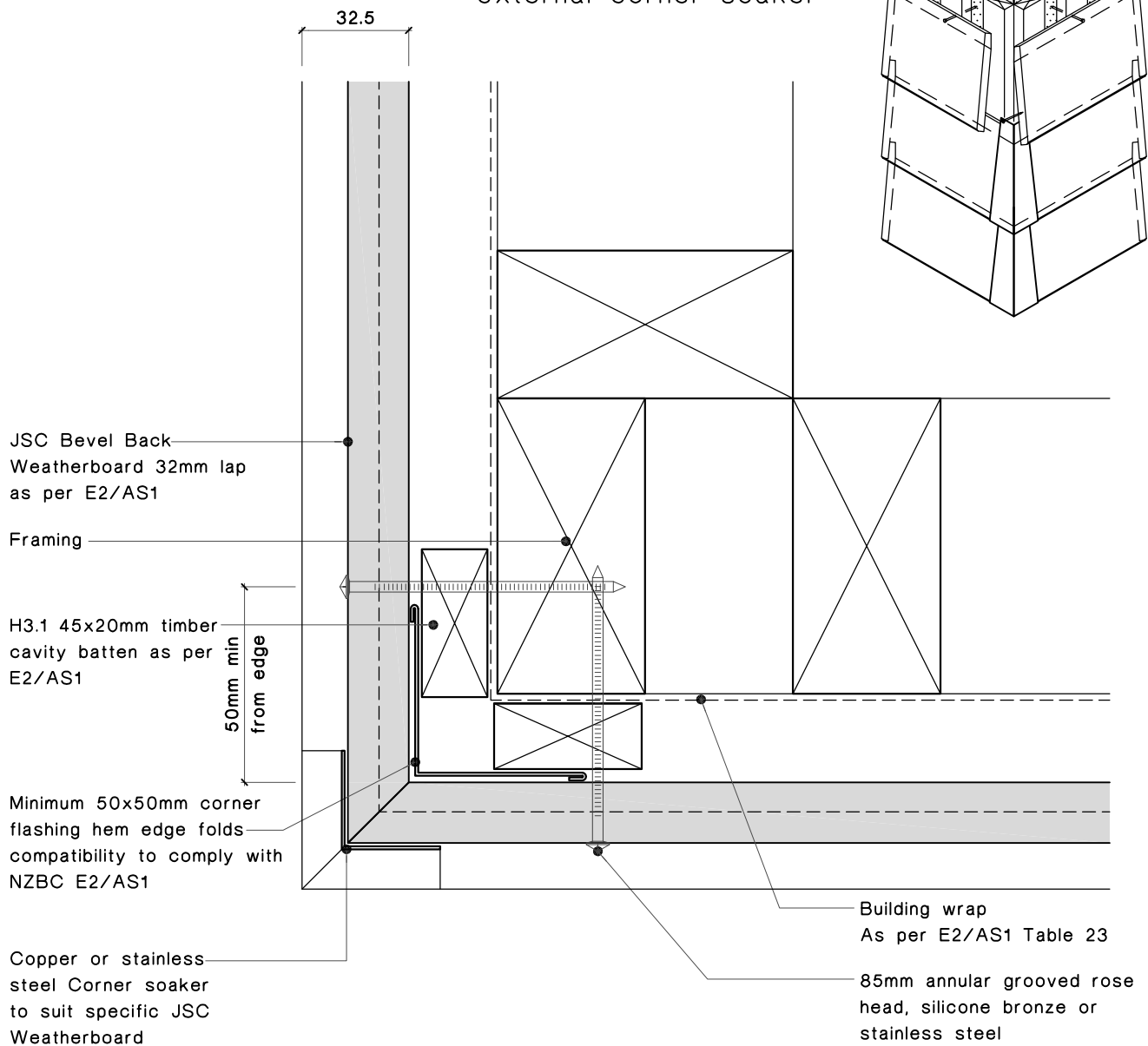
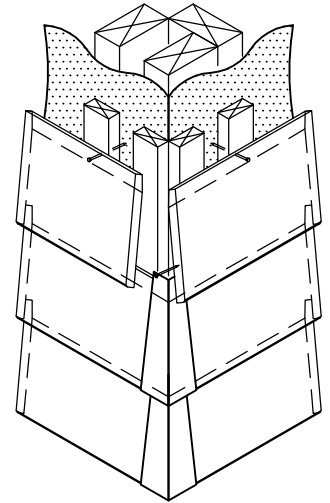
Dwg:

JB-C-05

Notes:

- All nail fixings pre-drilled minimum 1mm diameter smaller than the nail gauge.
- All products to be precoated & cut edges to be sealed as per Branz Bulletin 411.
- All materials and fixtures are to comply with E2/AS1 Clause 2.2
- Provide PVC tape bond break between H3.2 battens and any flashing.
- Ensure bevelback weathergrooves to be in line with 32mm lap. Specific rebated bevelback profiles to be fitted with a minimum gap of 2mm at the overlap between boards.

Isometric pictorial view
external corner soaker



External corner detail

Bevel Back Weatherboards Architectural Profile

JSC Timber

102 Main Road, Kumeu, Auckland, New Zealand
PO Box 285 Kumeu, Auckland 0841, New Zealand
Note: Details may be subject to change without notification

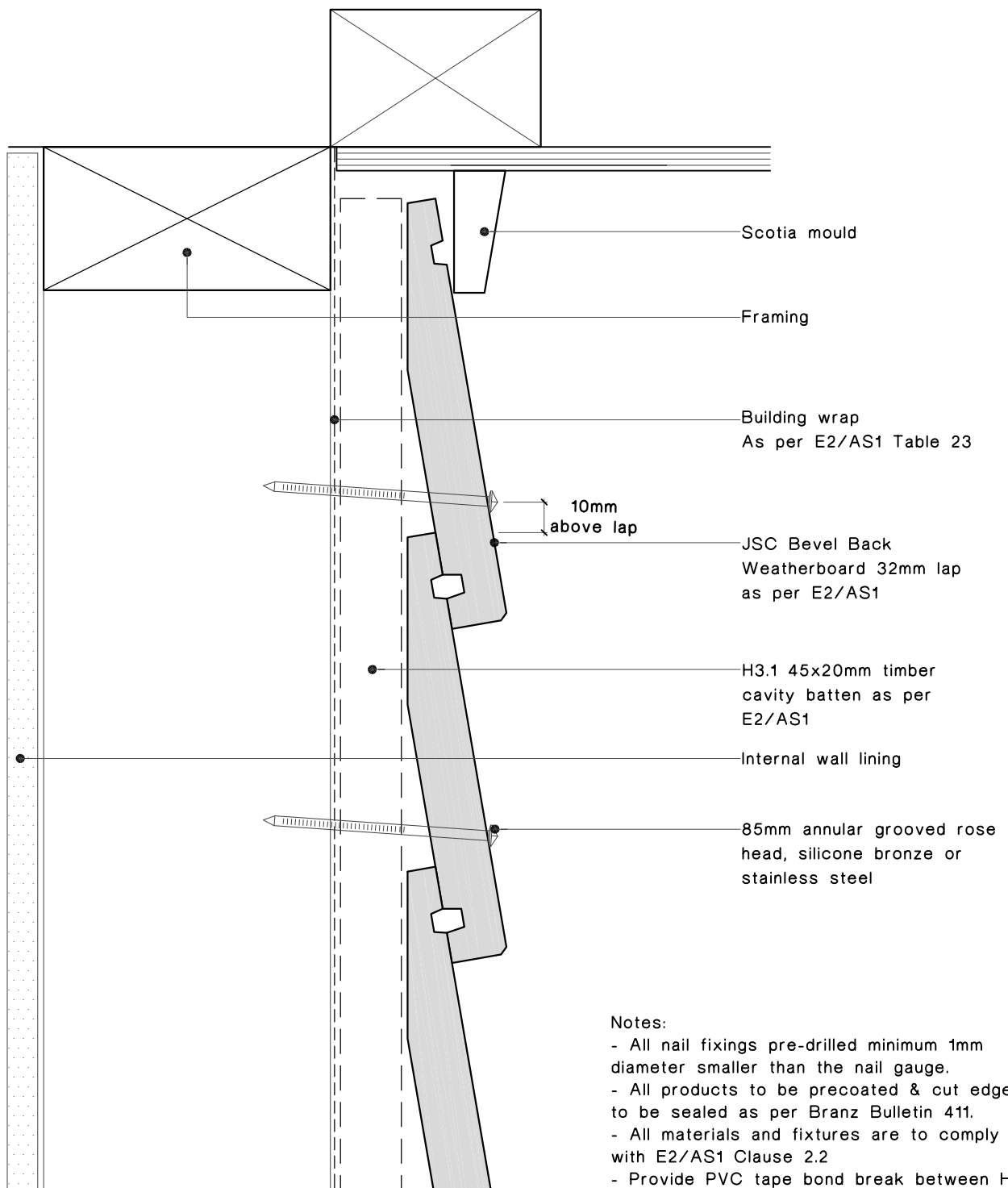
T.09 412-7722
F.09 412-7723
www.jsctimber.co.nz

Scale: 1:2

Date: 06/08/09

Dwg:

JB-C-06



Notes:

- All nail fixings pre-drilled minimum 1mm diameter smaller than the nail gauge.
- All products to be pre-coated & cut edges to be sealed as per Branz Bulletin 411.
- All materials and fixtures are to comply with E2/AS1 Clause 2.2
- Provide PVC tape bond break between H3.2 battens and any flashing.
- Ensure bevelback weathergrooves to be in line with 32mm lap. Specific rebated bevelback profiles to be fitted with a minimum gap of 2mm at the overlap between boards.

Top Plate to Soffit detail

Bevel Back Weatherboards Architectural Profile

JSC Timber

102 Main Road, Kumeu, Auckland, New Zealand
PO Box 285 Kumeu, Auckland 0841, New Zealand
Note: Details may be subject to change without notification

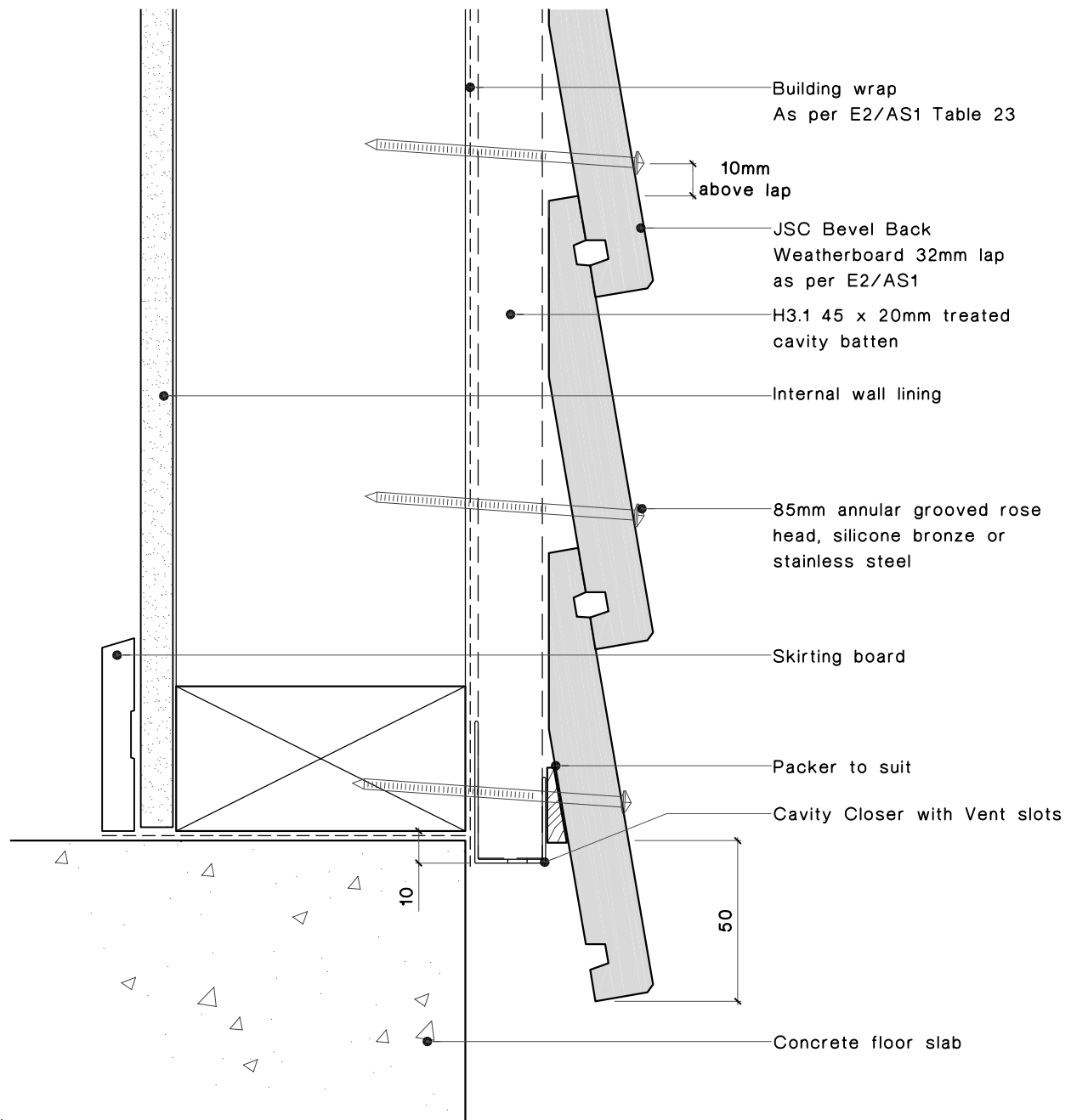
T.09 412-7722
F.09 412-7723
www.jsctimber.co.nz

Scale: 1:2

Date: 06/08/09

Dwg:

JB-C-07



Notes:

- All nail fixings pre-drilled minimum 1mm diameter smaller than the nail gauge.
- All products to be pre-coated & cut edges to be sealed as per Branz Bulletin 411.
- All materials and fixtures are to comply with E2/AS1 Clause 2.2
- Provide PVC tape bond break between H3.2 battens and any flashing.
- Ensure bevelback weathergrooves to be in line with 32mm lap. Specific rebated bevelback profiles to be fitted with a minimum gap of 2mm at the overlap between boards.

Bottom Plate detail

Bevel Back Weatherboards Architectural Profile

JSC Timber

102 Main Road, Kumeu, Auckland, New Zealand
PO Box 285 Kumeu, Auckland 0841, New Zealand

Note: Details may be subject to change without notification

T.09 412-7722

F.09 412-7723

www.jsctimber.co.nz

Scale: 1:2

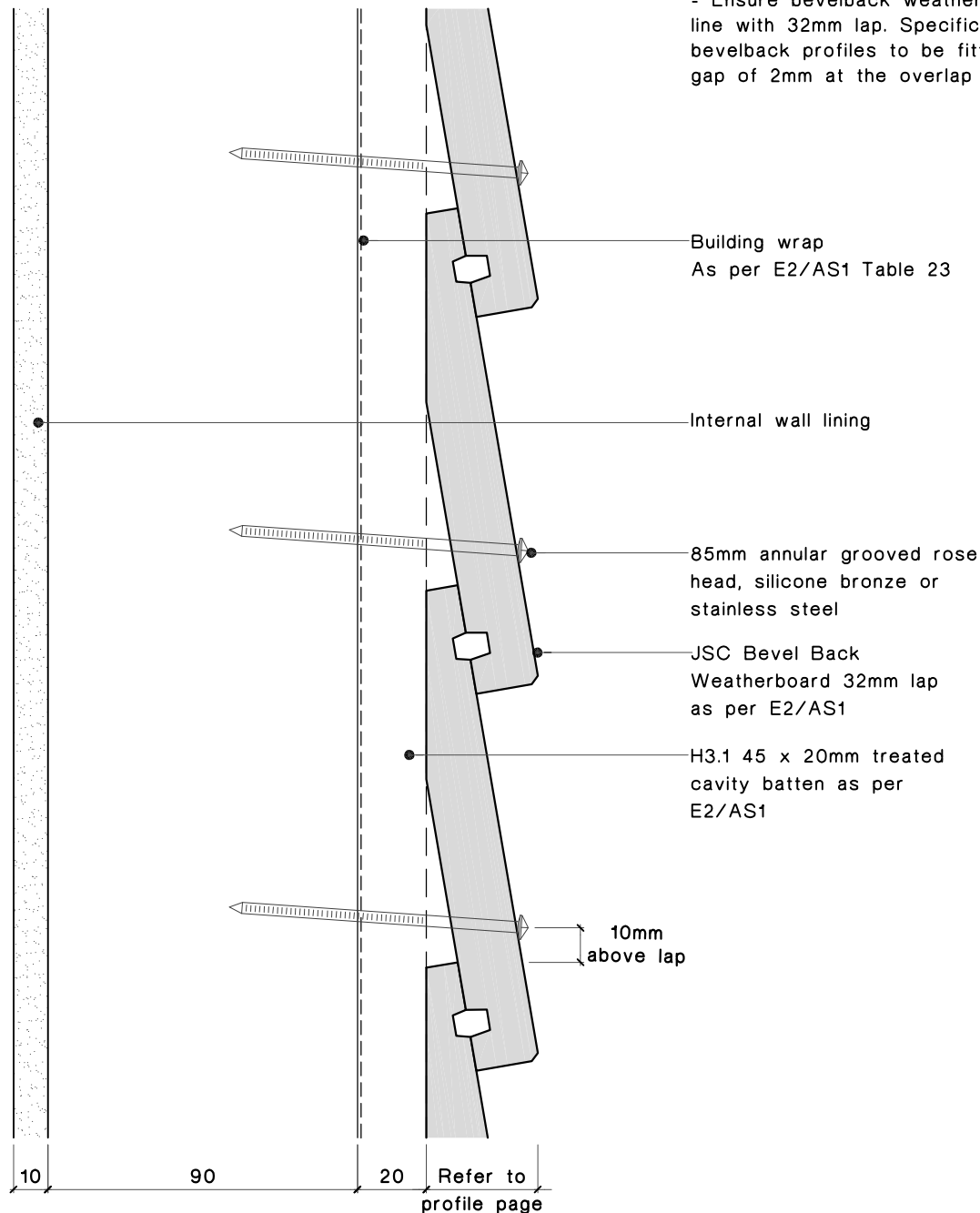
Date: 06/08/09

Dwg:

JB-C-08

Notes:

- All nail fixings pre-drilled minimum 1mm diameter smaller than the nail gauge.
- All products to be precoated & cut edges to be sealed as per Branz Bulletin 411.
- All materials and fixtures are to comply with E2/AS1 Clause 2.2
- Provide PVC tape bond break between H3.2 battens and any flashing.
- Ensure bevelback weathergrooves to be in line with 32mm lap. Specific rebated bevelback profiles to be fitted with a minimum gap of 2mm at the overlap between boards.



Sectional Detail

Bevel Back Weatherboards Architectural Profile

102 Main Road, Kumeu, Auckland, New Zealand
PO Box 285 Kumeu, Auckland 0841, New Zealand
Note: Details may be subject to change without notification

JSC Timber

T.09 412-7722
F.09 412-7723
www.jsctimber.co.nz

Scale: 1:2

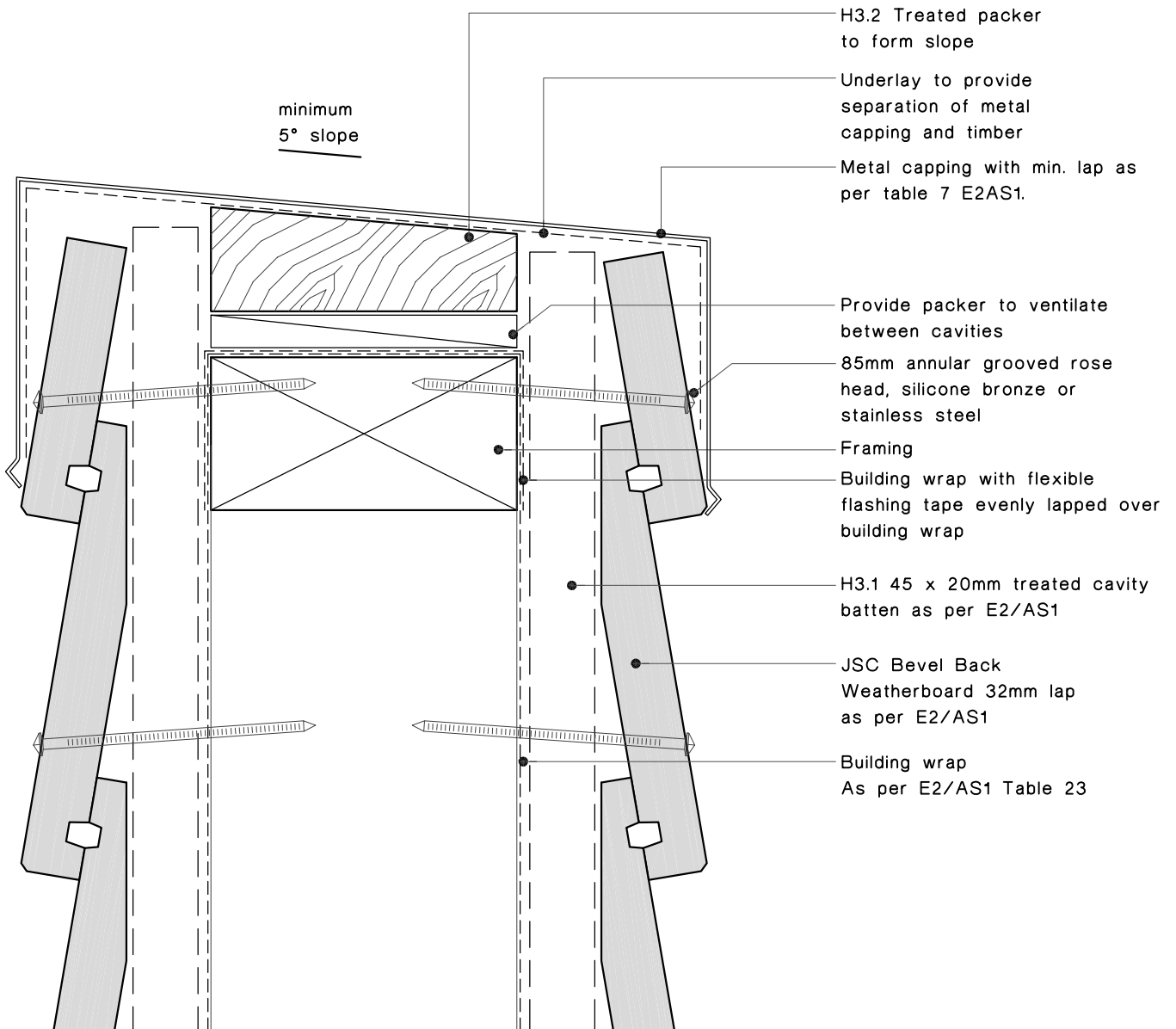
Date: 22/02/10

Dwg:

JB-C-09

Notes:

- All nail fixings pre-drilled minimum 1mm diameter smaller than the nail gauge.
- All products to be precoated & cut edges to be sealed as per Branz Bulletin 411.
- All materials and fixtures are to comply with E2/AS1 Clause 2.2
- Provide PVC tape bond break between H3.2 battens and any flashing.
- Ensure bevelback weathergrooves to be in line with 32mm lap. Specific rebated bevelback profiles to be fitted with a minimum gap of 2mm at the overlap between boards.



Parapet detail

Bevel Back Weatherboards Architectural Profile

102 Main Road, Kumeu, Auckland, New Zealand
PO Box 285 Kumeu, Auckland 0841, New Zealand

Note: Details may be subject to change without notification

JSC Timber

T.09 412-7722

F.09 412-7723

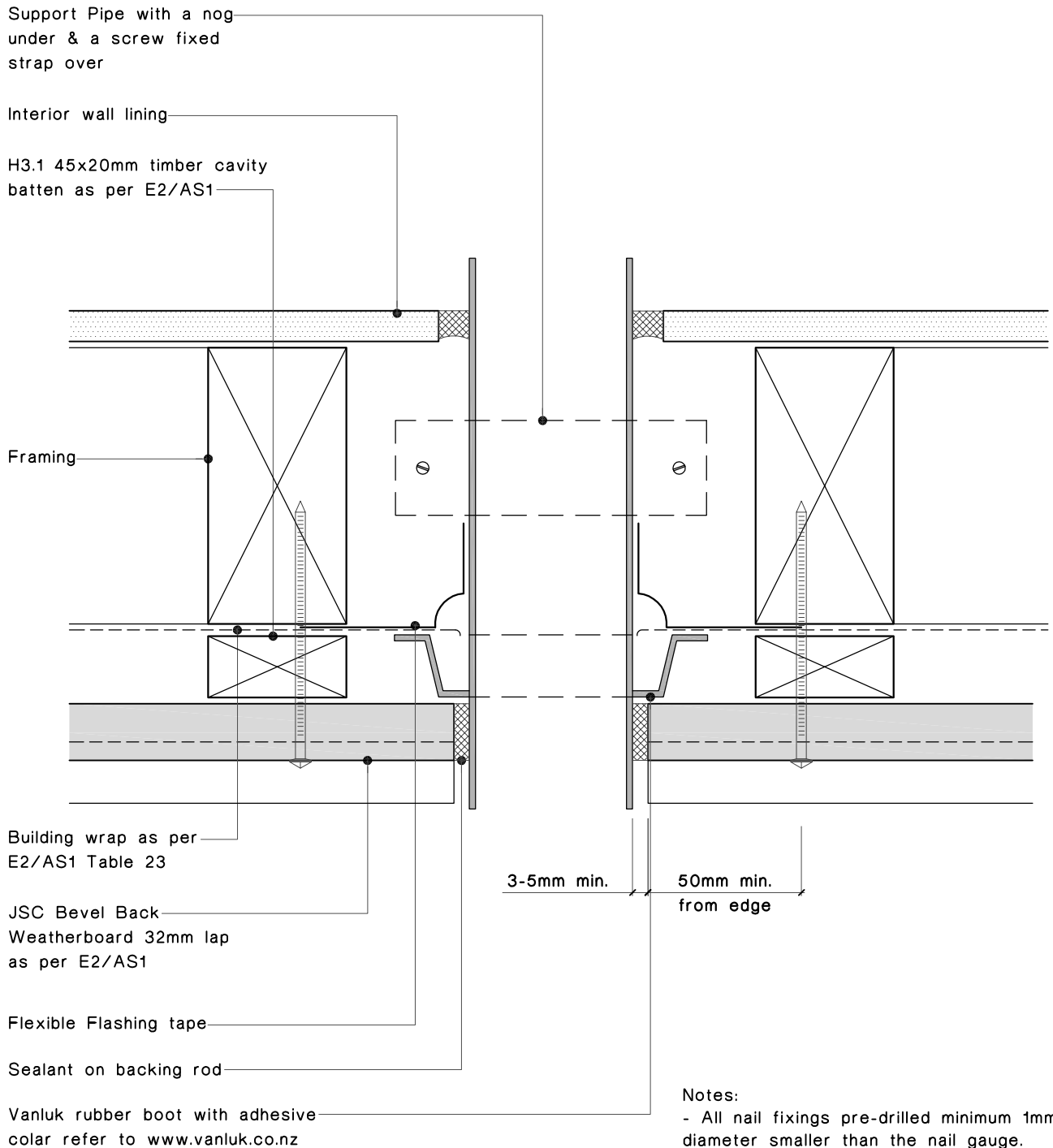
www.jsctimber.co.nz

Scale: 1:2

Date: 06/08/09

Dwg:

JB-C-10



Notes:

- All nail fixings pre-drilled minimum 1mm diameter smaller than the nail gauge.
- All products to be pre-coated & cut edges to be sealed as per Branz Bulletin 411.
- All materials and fixtures are to comply with E2/AS1 Clause 2.2
- Provide PVC tape bond break between H3.2 battens and any flashing.
- Ensure bevelback weathergrooves to be in line with 32mm lap. Specific rebated bevelback profiles to be fitted with a minimum gap of 2mm at the overlap between boards.

Pipe Penetration detail

Rusticated Weatherboards Architectural Profile

JSC Timber

102 Main Road, Kumeu, Auckland, New Zealand
 PO Box 285 Kumeu, Auckland 0841, New Zealand
 Note: Details may be subject to change without notification

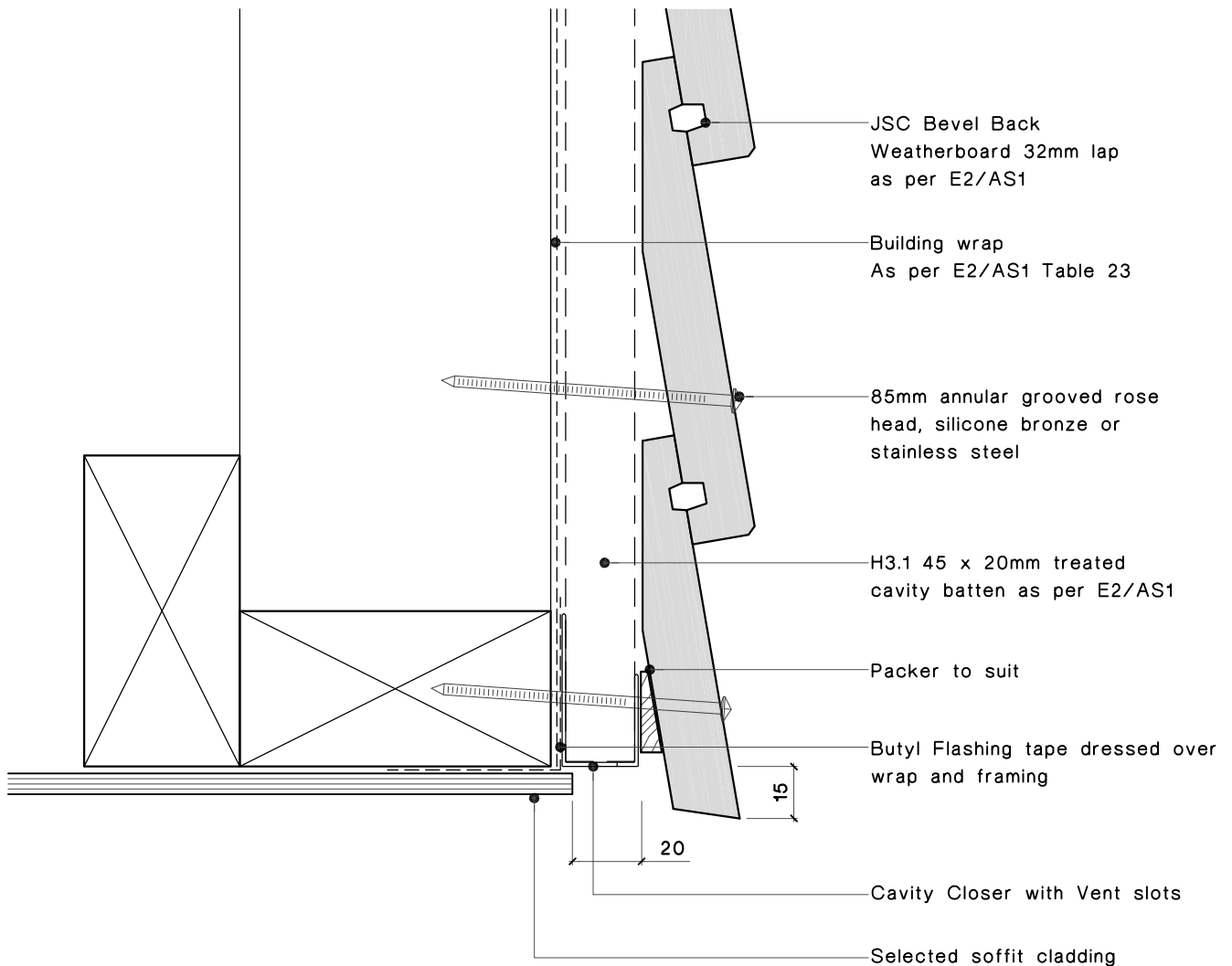
T.09 412-7722
 F.09 412-7723
www.jsctimber.co.nz

Scale: 1:2

Date: 06/08/09

Dwg:

JR-C-11



Notes:

- All nail fixings pre-drilled minimum 1mm diameter smaller than the nail gauge.
- All products to be pre-coated & cut edges to be sealed as per Branz Bulletin 411.
- All materials and fixtures are to comply with E2/AS1 Clause 2.2
- Provide PVC tape bond break between H3.2 battens and any flashing.
- Ensure bevelback weathergrooves to be in line with 32mm lap. Specific rebated bevelback profiles to be fitted with a minimum gap of 2mm at the overlap between boards.

Soffit detail

Bevel Back Weatherboards Architectural Profile

JSC Timber

102 Main Road, Kumeu, Auckland, New Zealand
PO Box 285 Kumeu, Auckland 0841, New Zealand

Note: Details may be subject to change without notification

T.09 412-7722

F.09 412-7723

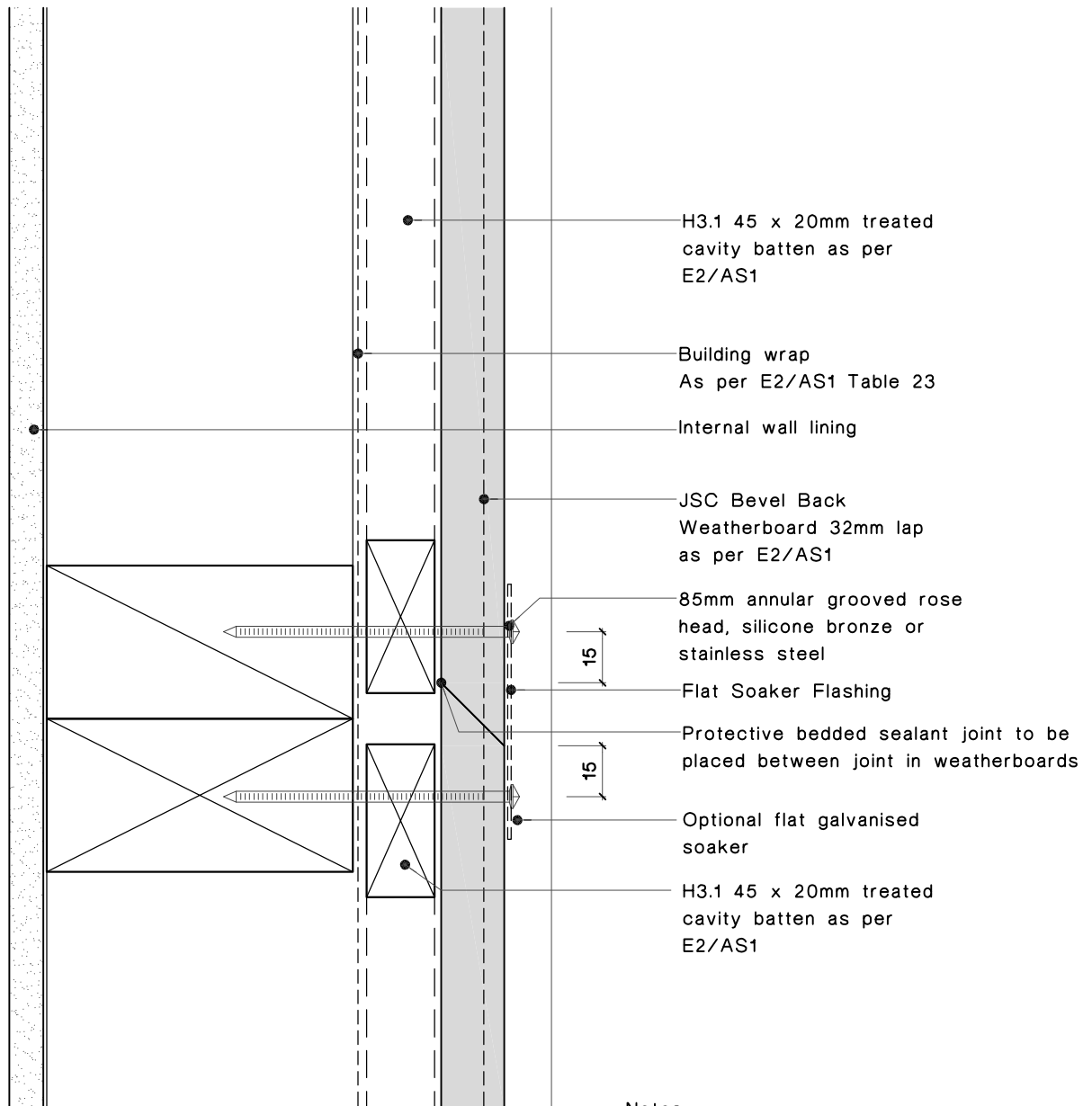
www.jsctimber.co.nz

Scale: 1:2

Date: 06/08/09

Dwg:

JB-C-12



Notes:

- All nail fixings pre-drilled minimum 1mm diameter smaller than the nail gauge.
- All products to be precoated & cut edges to be sealed as per Branz Bulletin 411.
- All materials and fixtures are to comply with E2/AS1 Clause 2.2
- Provide PVC tape bond break between H3.2 battens and any flashing.
- Ensure bevelback weathergrooves to be in line with 32mm lap. Specific rebated bevelback profiles to be fitted with a minimum gap of 2mm at the overlap between boards.

Scarf Jointing detail

Bevel Back Weatherboards Architectural Profile

JSC Timber

102 Main Road, Kumeu, Auckland, New Zealand
PO Box 285 Kumeu, Auckland 0841, New Zealand

Note: Details may be subject to change without notification

T.09 412-7722

F.09 412-7723

www.jsctimber.co.nz

Scale: 1:2

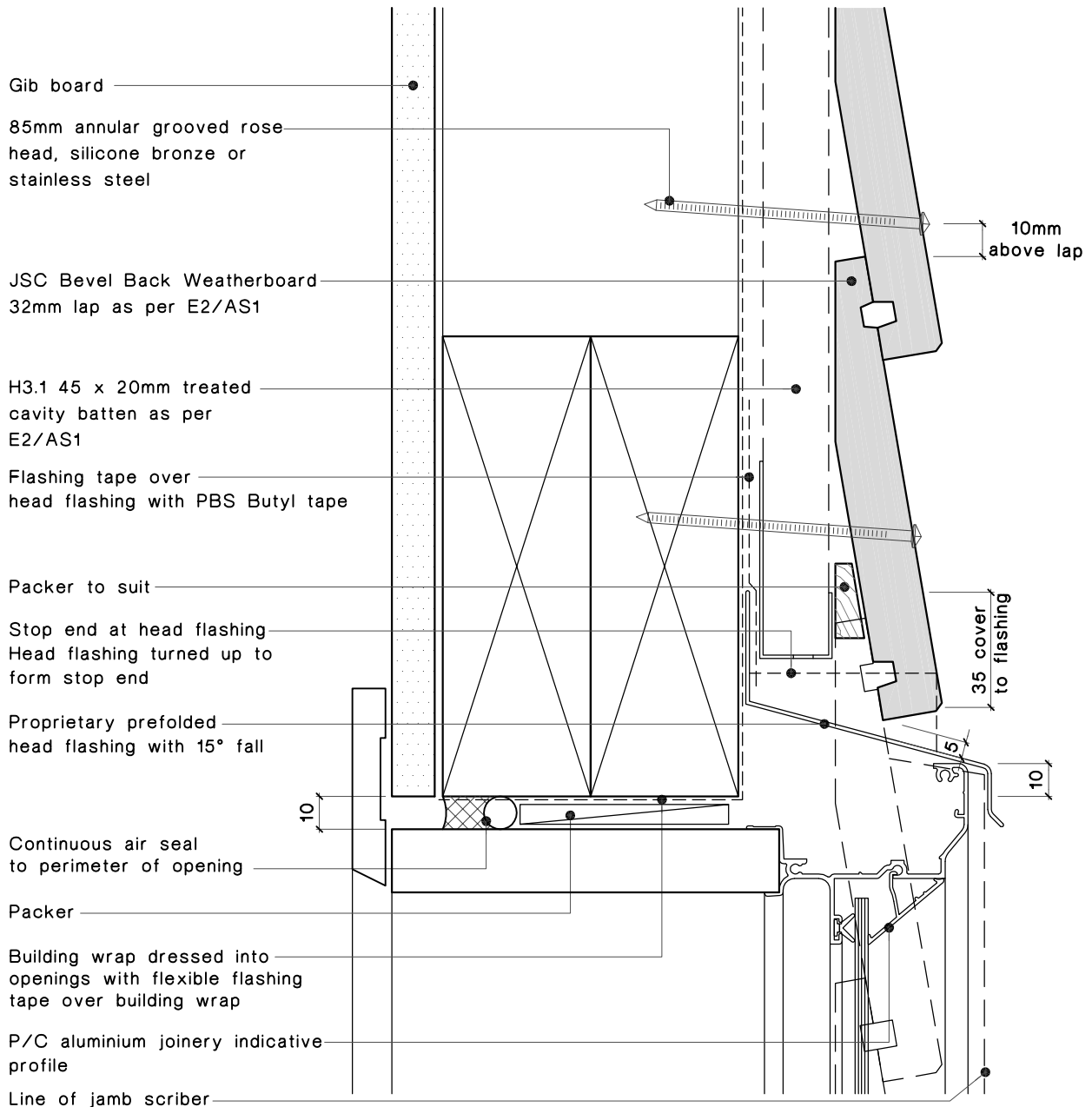
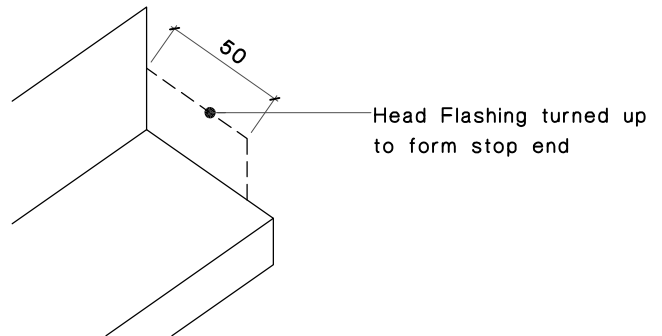
Date: 06/08/09

Dwg:

JB-C-14

Notes:

- All nail fixings pre-drilled minimum 1mm diameter smaller than the nail gauge.
- All products to be pre-coated & cut edges to be sealed as per Branz Bulletin 411.
- All materials and fixtures are to comply with E2/AS1 Clause 2.2
- Provide PVC tape bond break between H3.2 battens and any flashing.
- Ensure bevelback weathergrooves to be in line with 32mm lap. Specific rebated bevelback profiles to be fitted with a minimum gap of 2mm at the overlap between boards.



Aluminium Head detail

Bevel Back Weatherboards Architectural Profile

JSC Timber

102 Main Road, Kumeu, Auckland, New Zealand
PO Box 285 Kumeu, Auckland 0841, New Zealand

Note: Details may be subject to change without notification

T.09 412-7722

F.09 412-7723

www.jsctimber.co.nz

Scale: 1:2

Date: 06/08/09

Dwg:

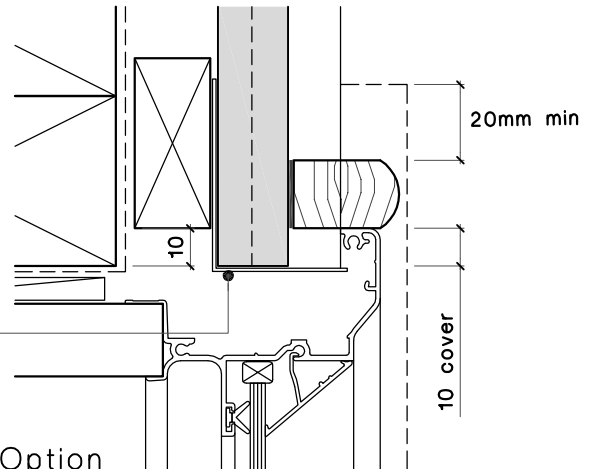
JB-C-20-H

Notes:

- All nail fixings pre-drilled minimum 1mm diameter smaller than the nail gauge.
- All products to be pre-coated & cut edges to be sealed as per Branz Bulletin 411.
- All materials and fixtures are to comply with E2/AS1 Clause 2.2
- Provide PVC tape bond break between H3.2 battens and any flashing.
- Ensure bevelback weathergrooves to be in line with 32mm lap. Specific rebated bevelback profiles to be fitted with a minimum gap of 2mm at the overlap between boards.

Optional: folded 0.9mm jamb flashing. Allow to return flashing to suit weatherboard depth

Alternate Option



JSC Bevel Back Weatherboard
32mm lap as per E2/AS1

Gib board

H3.1 45 x 20mm treated
cavity batten as per
E2/AS1

18mm Scriber cut to suit
Weatherboard profile sealed
to Weatherboard

Continuous air seal to
perimeter of opening

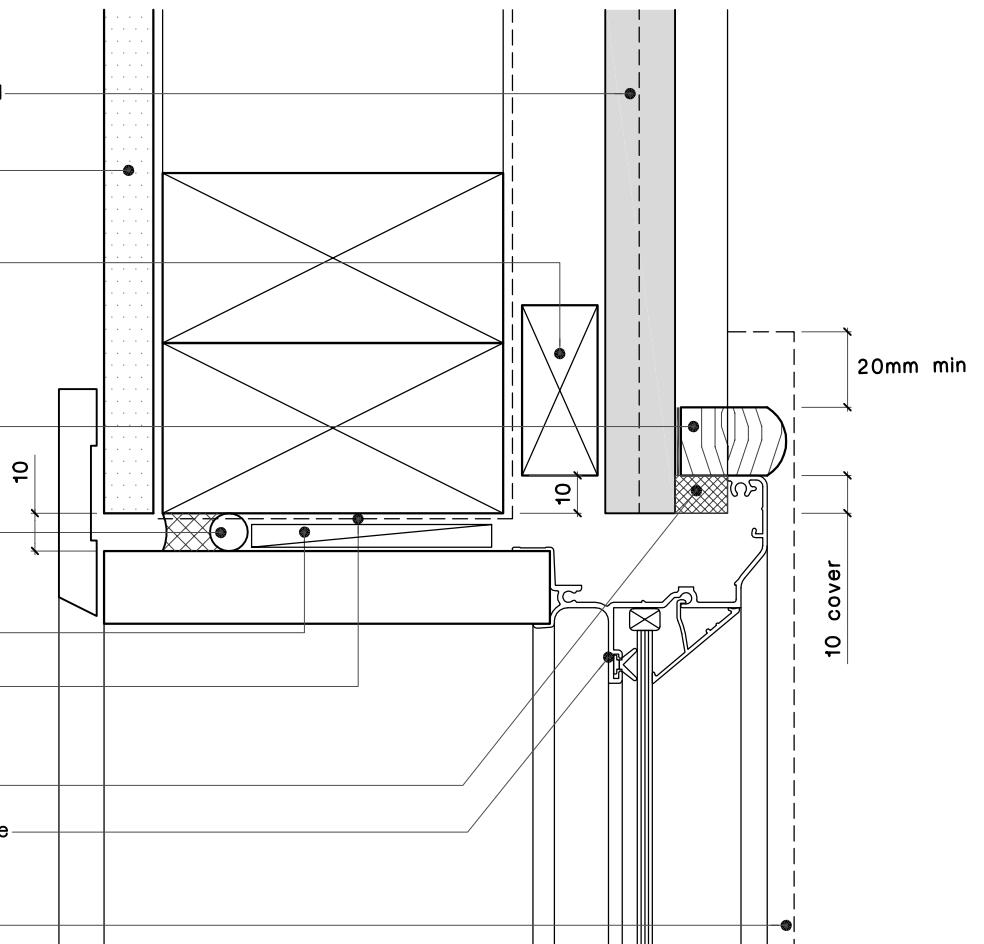
Packer

Building wrap dressed into
openings with flexible flashing
tape over building wrap

Compressible foam tape seal

P/C aluminium joinery indicative
profile

Line of head flashing



Aluminium Jamb detail

Bevel Back Weatherboards Architectural Profile

JSC Timber

102 Main Road, Kumeu, Auckland, New Zealand
PO Box 285 Kumeu, Auckland 0841, New Zealand

Note: Details may be subject to change without notification

T.09 412-7722

F.09 412-7723

www.jsctimber.co.nz

Scale: 1:2

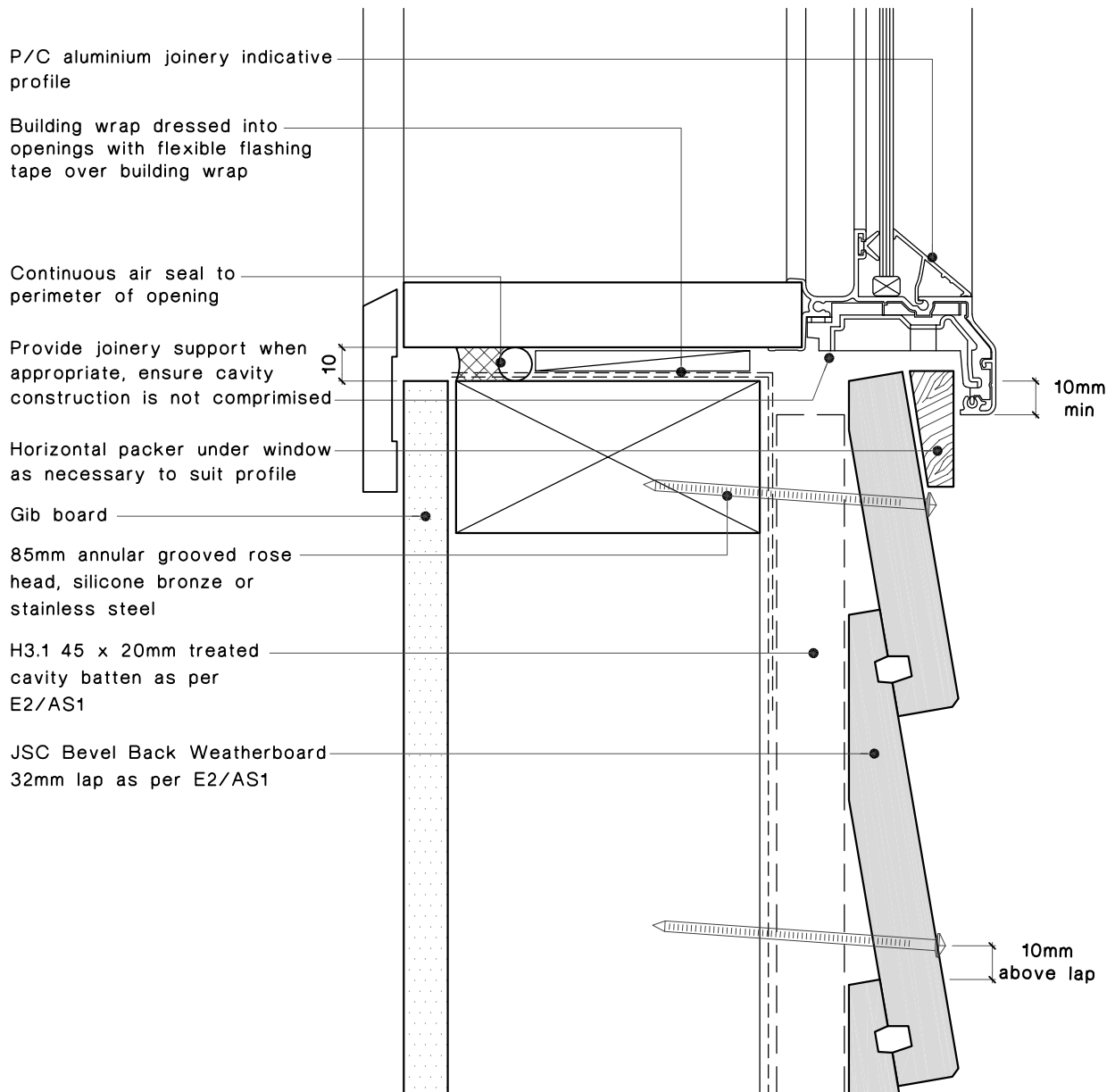
Date: 06/08/09

Dwg:

JB-C-21-J

Notes:

- All nail fixings pre-drilled minimum 1mm diameter smaller than the nail gauge.
- All products to be precoated & cut edges to be sealed as per Branz Bulletin 411.
- All materials and fixtures are to comply with E2/AS1 Clause 2.2
- Provide PVC tape bond break between H3.2 battens and any flashing.
- Ensure bevelback weathergrooves to be in line with 32mm lap. Specific rebated bevelback profiles to be fitted with a minimum gap of 2mm at the overlap between boards.



Aluminium Sill detail

Bevel Back Weatherboards Architectural Profile

JSC Timber

102 Main Road, Kumeu, Auckland, New Zealand
PO Box 285 Kumeu, Auckland 0841, New Zealand

T.09 412-7722
F.09 412-7723
www.jsctimber.co.nz

Note: Details may be subject to change without notification

Scale: 1:2

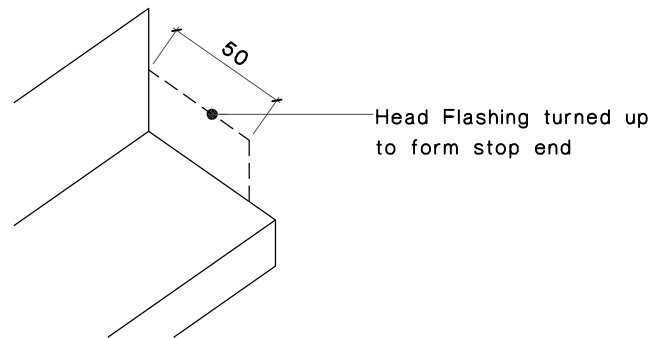
Date: 06/08/09

Dwg:

JB-C-22-S

Notes:

- All nail fixings pre-drilled minimum 1mm diameter smaller than the nail gauge.
- All products to be precoated & cut edges to be sealed as per Branz Bulletin 411.
- All materials and fixtures are to comply with E2/AS1 Clause 2.2
- Provide PVC tape bond break between H3.2 battens and any flashing.
- Ensure bevelback weathergrooves to be in line with 32mm lap. Specific rebated bevelback profiles to be fitted with a minimum gap of 2mm at the overlap between boards.



JSC Bevel Back Weatherboard
32mm lap as per E2/AS1

H3.1 45 x 20mm treated
cavity batten as per E2/AS1

Gib board

Flashing tape over
head flashing with PBS Butyl tape

85mm annular grooved rose
head, silicone bronze or
stainless steel

Packer to suit

Stop end at head flashing
Head flashing turned up to
form stop end

Proprietary prefolded
head flashing with 15° fall

Continuous air seal
to perimeter of opening

Building wrap dressed into
openings with flexible flashing
tape over building wrap

P/C aluminium joinery indicative
profile

Line of jamb scribe

10mm
above lap

35 cover
to flashing

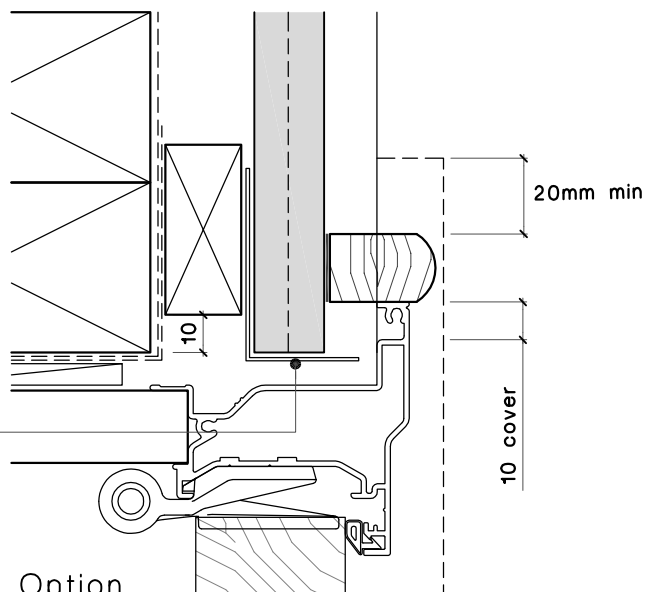
Aluminium Door Head detail

Bevel Back Weatherboards Architectural Profile

Notes:

- All nail fixings pre-drilled minimum 1mm diameter smaller than the nail gauge.
- All products to be precoated & cut edges to be sealed as per Branz Bulletin 411.
- All materials and fixtures are to comply with E2/AS1 Clause 2.2
- Provide PVC tape bond break between H3.2 battens and any flashing.
- Ensure bevelback weathergrooves to be in line with 32mm lap. Specific rebated bevelback profiles to be fitted with a minimum gap of 2mm at the overlap between boards.

Optional: folded 0.9mm jamb flashing. Allow to return flashing to suit weatherboard depth



Alternate Option

JSC Bevel Back Weatherboard
32mm lap as per E2/AS1

Building wrap
As per E2/AS1 Table 23

Gib board

H3.1 45x20mm timber cavity
batten as per E2/AS1

18mm Scriber cut to suit
Weatherboard profile sealed
to Weatherboard

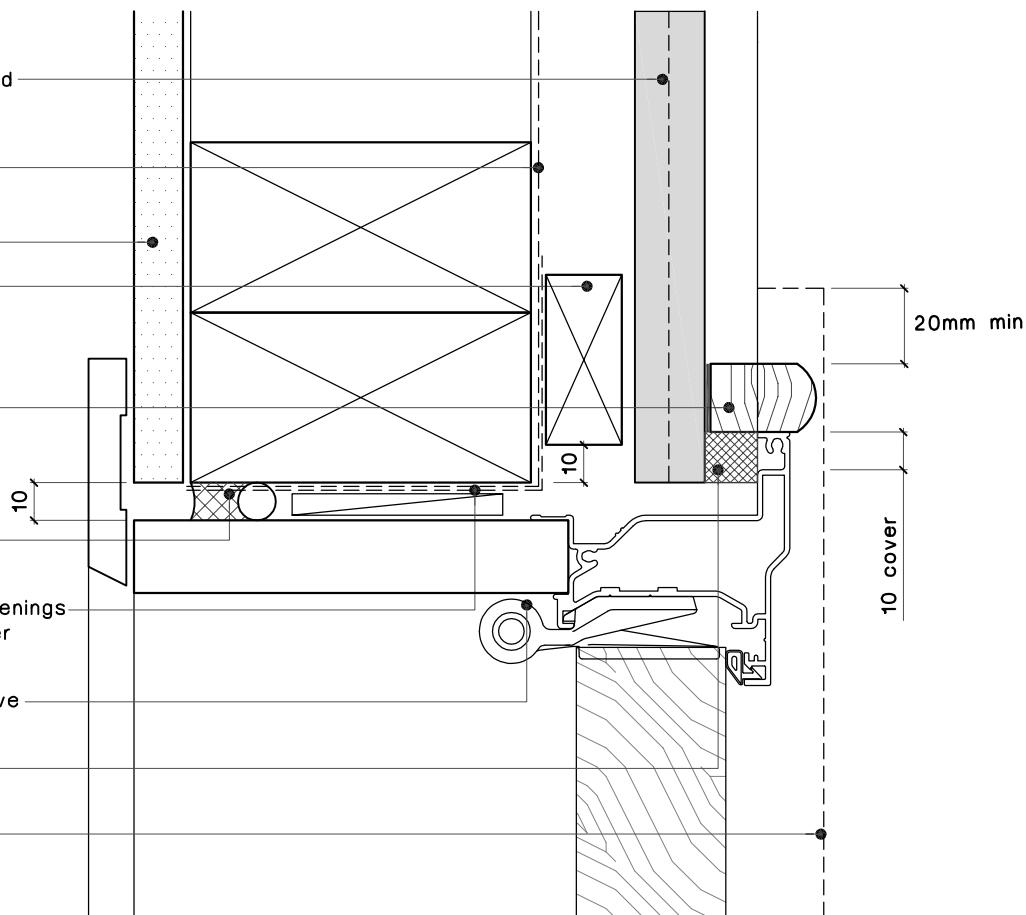
Continuous air seal to
perimeter of opening

Building wrap dressed into openings
with flexible flashing tape over
building wrap

P/C aluminium joinery indicative
profile

Compressible foam tape seal

Line of head flashing above



Aluminium Door Jamb detail

Bevel Back Weatherboards Architectural Profile