

JSC VertiClad

Vertical Shiplap Weatherboard System

45mm Cavity

INDEX - JSC VERTICLAD ON 45mm CAVITY

<u>Drawing</u>	<u>Detail</u>	<u>Date of current drawing</u>
JV-45-PRF	VertiClad Profiles	8/12/16
JV-45-02	Internal Corner Detail	8/12/16
JV-45-04	External Corner Detail	8/12/16
JV-45-07	Bottom Plate Detail	8/12/16
JV-45-08	Top Plate to Soffit Detail	8/12/16
JV-45-14	Soffit Detail	8/12/16

Index

Verticlad Weatherboards Architectural Profile

22 Sawmill Road, Riverhead, Auckland

Note: Details may be subject to change without notification



T.09 412-7722

tech@jsctimber.co.nz

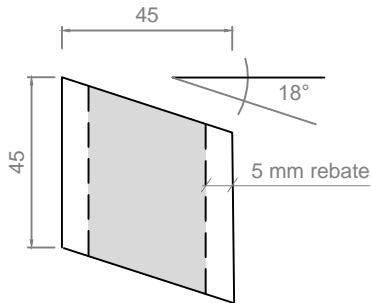
www.jsctimber.co.nz

Scale: 1:2

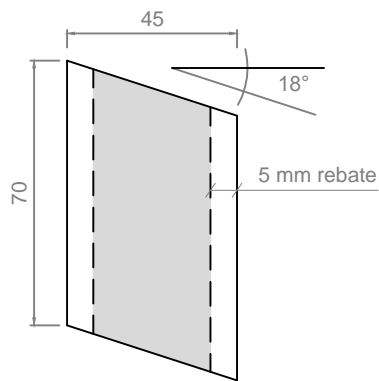
Date: 8/12/2016

Dwg:

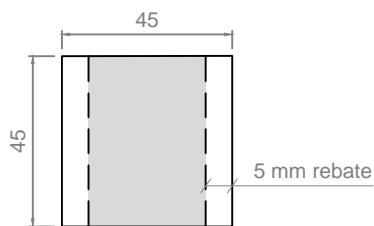
JV-I45 -NDEX



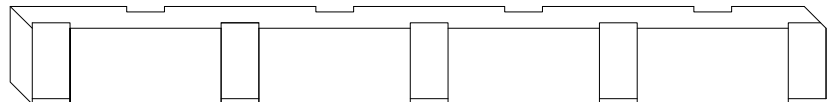
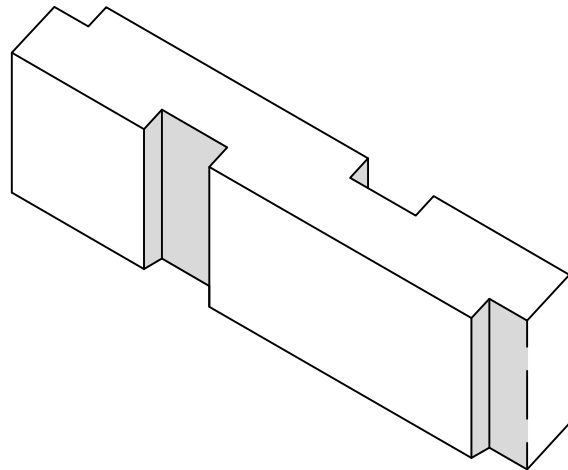
JSC-H-45x45
Used over nogs



JSC-H-45x70
Will span up to 600mm stud centres



JSC-V-45x45



H3.2 Treated Timber Castellated Batten

Cavity Battens

Vertical Shiplap Architectural Profile

22 Sawmill Road, Riverhead, Auckland

Note: Details to be read in conjunction with JSC installation details and may be subject to change without notification www.jsctimber.co.nz

JSC Timber

T.09 412-7722

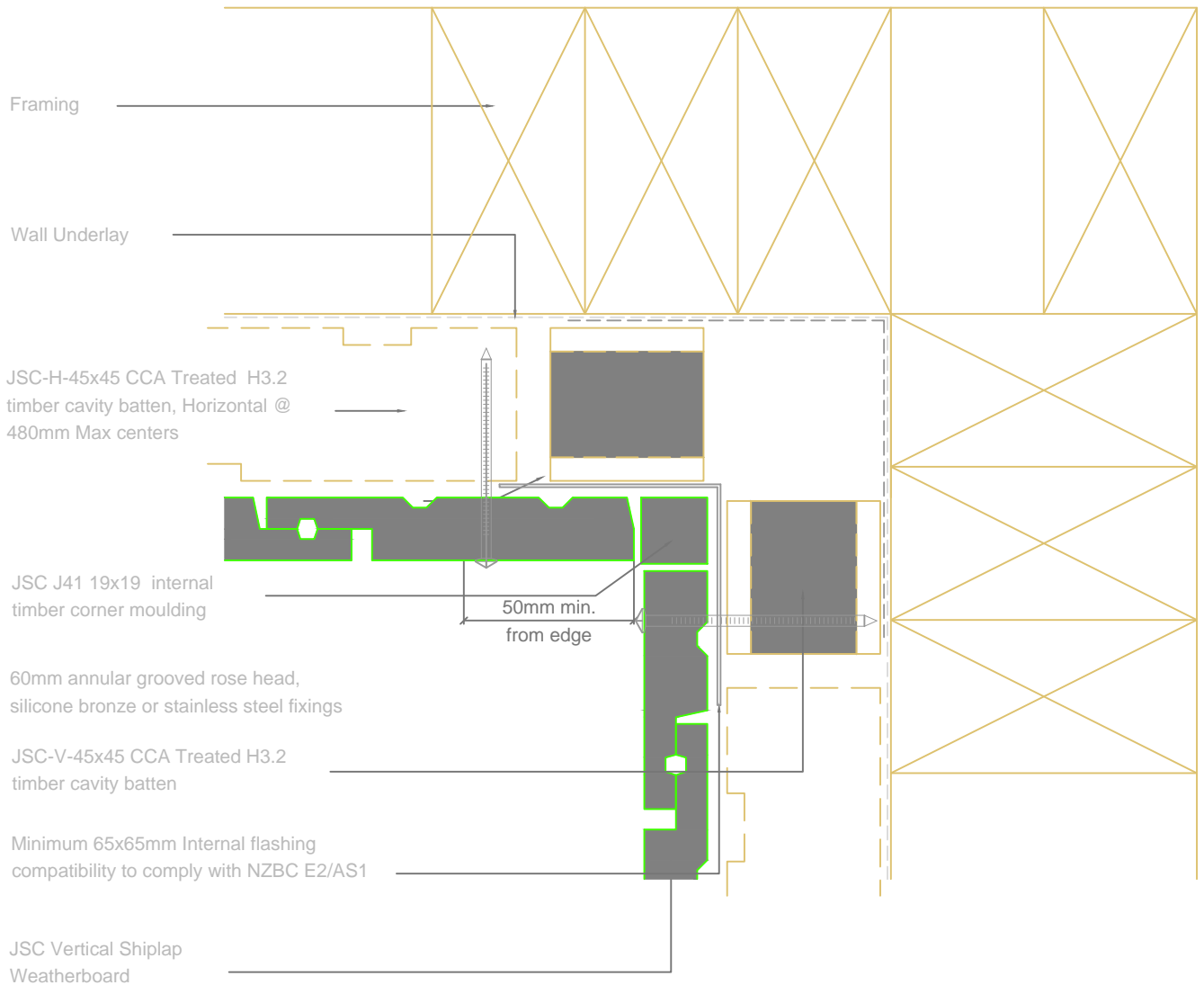
F.09 412-7723

Scale: 1:2

Date: 8/12/2016

Dwg:

JV-45-PRF



Internal Corner detail

Vertical Shiplap Architectural Profile

JSC Timber

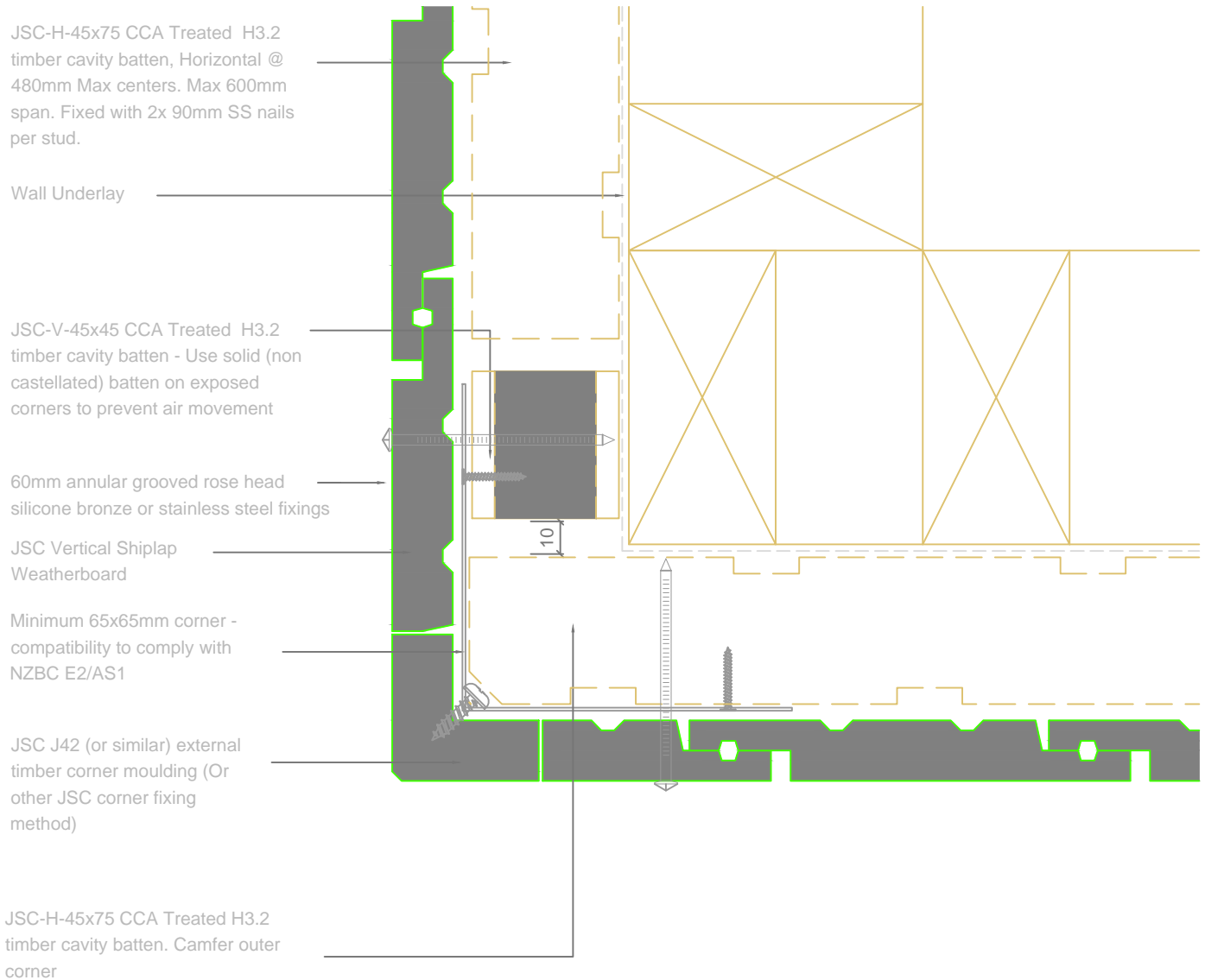
22 Sawmill Road, Riverhead, Auckland
 Note: Details may be subject to change without notice

T.09 412-7722
 F.09 412-7723
www.jsctimber.co.nz

Scale: 1:2

Date: 17/08/13

Dwg:
JV-45-02



External Corner detail (Reverse Fixed Version)
Vertical Shiplap Architectural Profile

JSC Timber

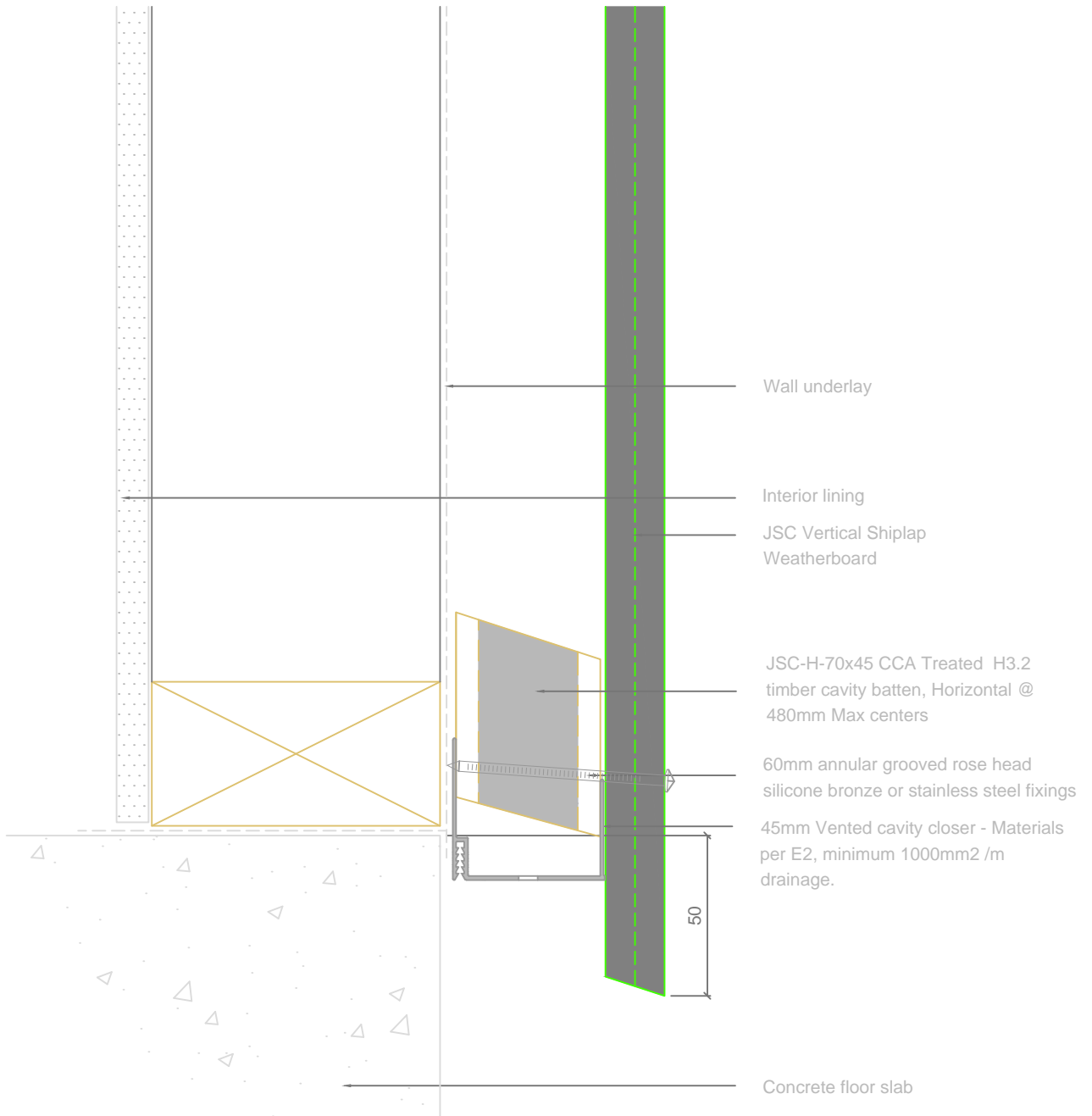
22 Main Road, Riverhead, Auckland
Note: Details may be subject to change without notice

T.09 412-7722
F.09 412-7723
www.jsctimber.co.nz

Scale: 1:2

Date: 17/08/13

Dwg:
JV-45-04



Bottom Plate detail

Vertical Shiplap Architectural Profile

22 Sawmill Road, Riverhead, Auckland
 Note: Details may be subject to change without notice

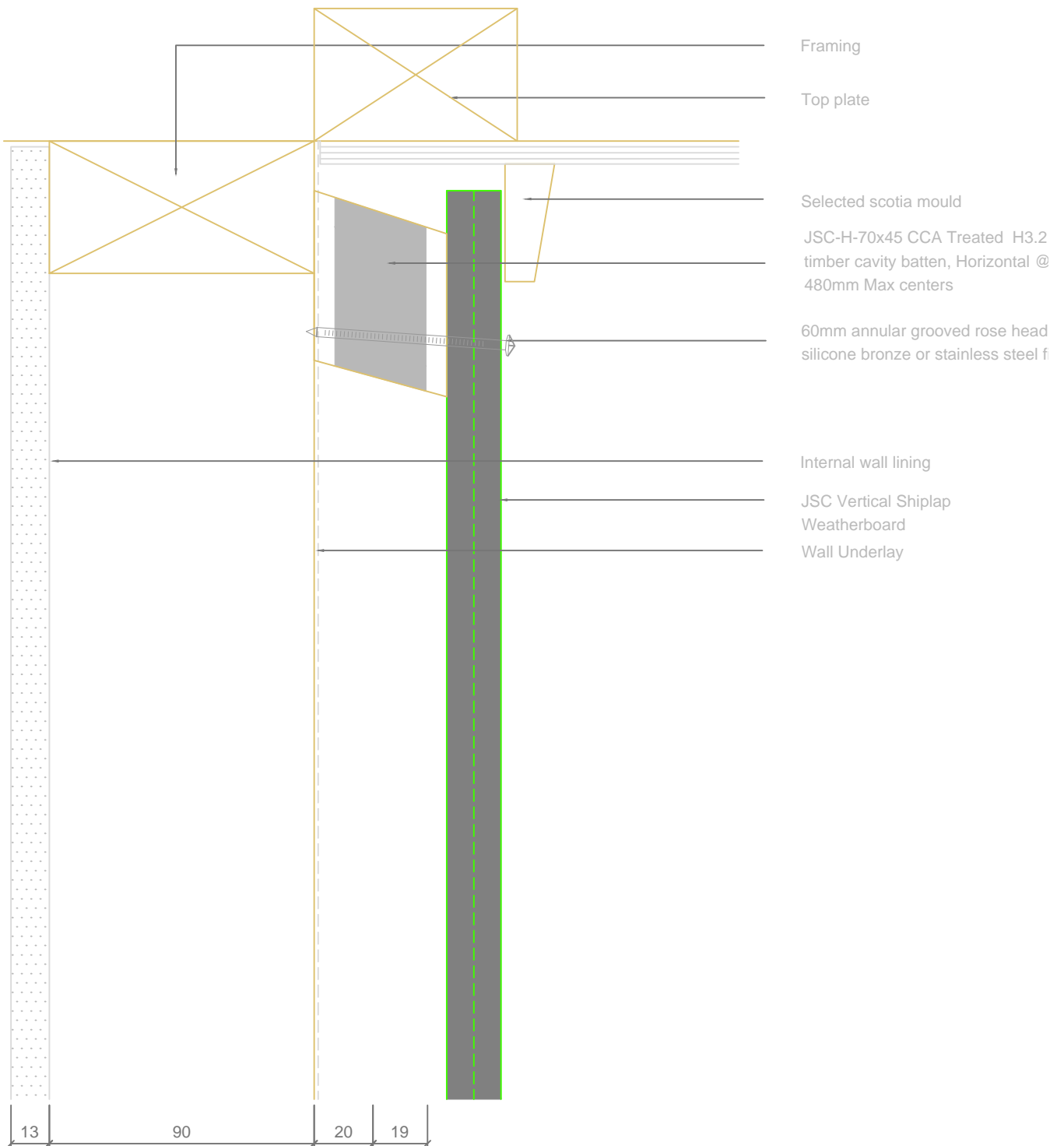
JSC Timber

T.09 412-7722
 F.09 412-7723
www.jsctimber.co.nz

Scale: 1:2

Date: 17/08/13

Dwg:
JV-45-07



Top Plate to Soffit detail

Vertical Shiplap Architectural Profile

22 Sawmill Road, Riverhead, Auckland
 Note: Details may be subject to change without notice

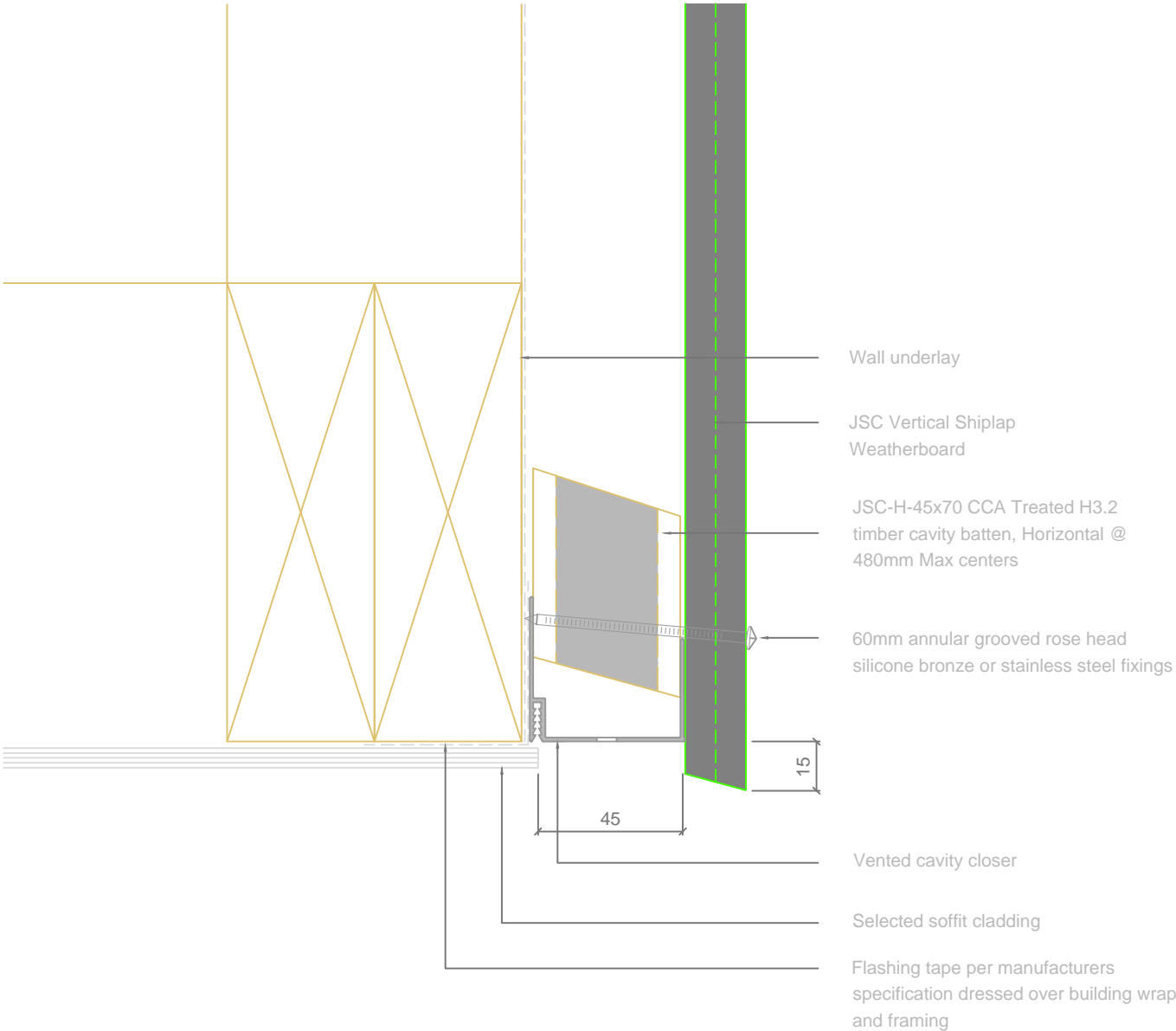
JSC Timber

T.09 412-7722
 F.09 412-7723
www.jsctimber.co.nz

Scale: 1:2

Date: 17/08/13

Dwg:
 JV-C-08



Soffit detail
 Vertical Shiplap Architectural Profile

22 Swamill Road, Riverhead, Auckland
 Note: Details may be subject to change without notice



T.09 412-7722
 F.09 412-7723
www.jsctimber.co.nz

Scale: 1:2
 Date: 17/08/13
 Dwg: JV-45-14