

# **JSC RusticClad**

---

## **Rusticated Weatherboard System**

Cavity on Rigid Air Barrier

# HORIZONTAL RUSTICATED WEATHERBOARD DRAWING INDEX - JR-RB-00

Date 20.01.2011

Product	Application	Detail	Description	Issued
JR	RB	Index	Drawing index	19-03-2010
JR	IG	01	Product installation guidelines	25-02-2010
JR	IG	02	Product installation guidelines	25-02-2010
JR	IG	03	Product installation guidelines	25-02-2010
JR	RB	KN	General installation keynotes	19-03-2010
JV	FRM		Frame setout	01.07.2009
JR	RB	01	Internal corner detail - W flashing	19-03-2010
JR	RB	02	Internal corner J41 detail - L flashing	19-03-2010
JR	RB	03	External corner J40 detail - Exposed corner	19-03-2010
JR	RB	04	External corner J42 detail - Flush corner	19-03-2010
JR	RB	05	External corner detail - Cover boards	19-03-2010
JR	RB	06	External corner - Powder coated external corner extrusion	19-03-2010
JR	RB	07	Bottom plate detail	19-03-2010
JR	RB	08	Top plate to soffit detail	19-03-2010
JR	RB	09	Parapet detail	20-01-2011
JR	RB	10	Internal corner detail - 135 degree wall	19-03-2010
JR	RB	11	External corner detail - 135 degree wall	19-03-2010
JR	RB	12	Pipe penetration detail	19-03-2010
JR	RB	13	Horizontal joint detail	19-03-2010
JR	RB	14	Soffit detail	19-03-2010
JR	RB	15	Scarf jointing detail	19-03-2010
JR	RB	20	Aluminium window head detail	19-03-2010
JR	RB	21	Aluminium window jamb detail	19-03-2010
JR	RB	22	Aluminium window sill detail	19-03-2010

102 Main Road, Kumeu, Auckland, New Zealand  
PO Box 285 Kumeu, Auckland 0841, New Zealand  
T.09 412-7722 F.09 412-7723

72 Hammersmith Drive, Sockburn, Christchurch, New Zealand  
PO Box 2841 Christchurch 8140, New Zealand  
T.03 348-9726 F.03 365-7727

**JSC Timber**

[www.jsctimber.co.nz](http://www.jsctimber.co.nz)

## General Installation Keynotes

### Profiles

- Shall be machined to NZS3617 and/or Branz Bulletin 411.

### Durability

- Timber weatherboards to comply with NZS3602 - B2 durability.

### Compatibility of Materials

- To comply with Table 20 "Material selection" E2/AS1.
- To comply with Table 21 "Compatibility of materials in contact" E2/AS1.
- To comply with Table 22 "Compatibility of materials subject to run off" E2/AS1.

### Building Wraps and Underlays

- To comply with Table 23 "Properties of Underlays and Building Wraps" E2/AS1.
- Fixings to comply with E2/AS1 9.1.8.5 "Wall framing behind cavities".

### Fixings

- To comply with Table 24 "Fixings selection for wall claddings" E2/AS1, refer to B2 Durability requirements.

### General Fixings

- Profiles shall be machined to NZ3617 and/or Branz Bulletin 411.
- All nail fixings pre-drilled minimum 1mm diameter smaller than the nail gauge.
- All products to be pre-coated and cut edges to be sealed to JSC Timber specifications.
- Provide PVC tape bond break between H3.2 battens and any aluminium flashing.
- Rusticated and Vertical Shiplap Weatherboards to be fixed with a minimum gap of 2mm at the overlap between boards.
- Rebated Bevel Back profiles to be fixed with a minimum gap of 2mm at the overlap between boards.
- Ensure Bevel Back Weatherboard weather grooves are in line with a minimum 32mm lap.
- All materials and fixtures are to comply with E2/AS1 Clause 2.2.
- All Aluminium joinery to comply with NZS/BC 4211.
- Option PBS Rigid Air Barrier to be sealed with SikaGuard 703w to manufacturer's specification.

### CedarShield

- Weatherboards are to be factory coated to all sides prior to installation.
- Weatherboards shall be annually cleaned and recoated to manufacturer's recommendations and maintenance guidelines.

## General installation keynotes

### General keynotes



102 Main Road, Kumeu, Auckland, New Zealand  
PO Box 285 Kumeu, Auckland 0841, New Zealand  
Note: Details may be subject to change without notification

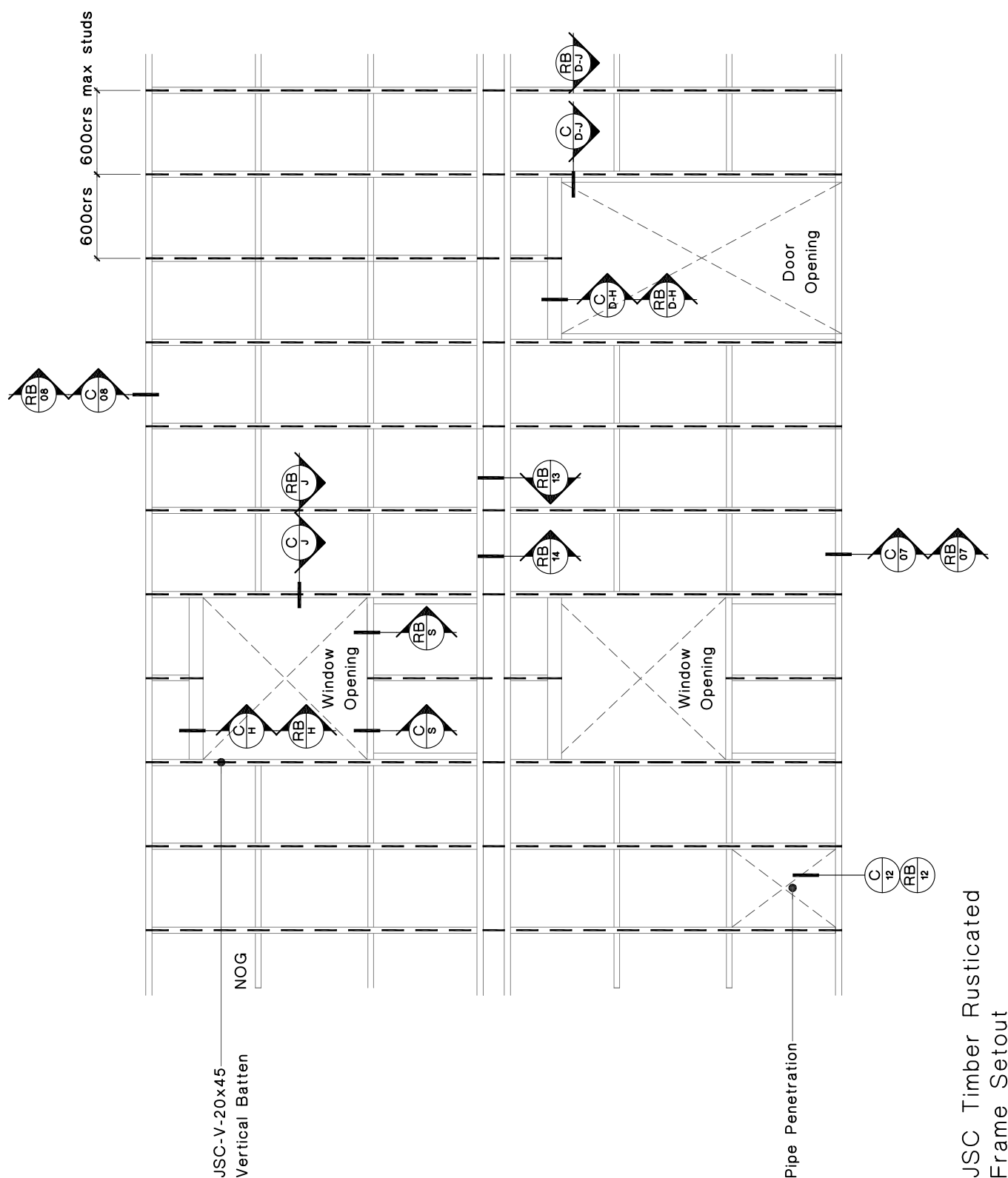
T.09 412-7722  
F.09 412-7723  
[www.jsctimber.co.nz](http://www.jsctimber.co.nz)

Scale: NTS

Date: 19/03/10

Dwg:

**JR-RB-KN**



## Frame Setout

Rusticated Weatherboards Architectural Profile

**JSC Timber**

102 Main Road, Kumeu, Auckland, New Zealand  
PO Box 285 Kumeu, Auckland 0841, New Zealand

Note: Details may be subject to change without notification

T.09 412-7722

F.09 412-7723

[www.jsctimber.co.nz](http://www.jsctimber.co.nz)

Scale: NTS

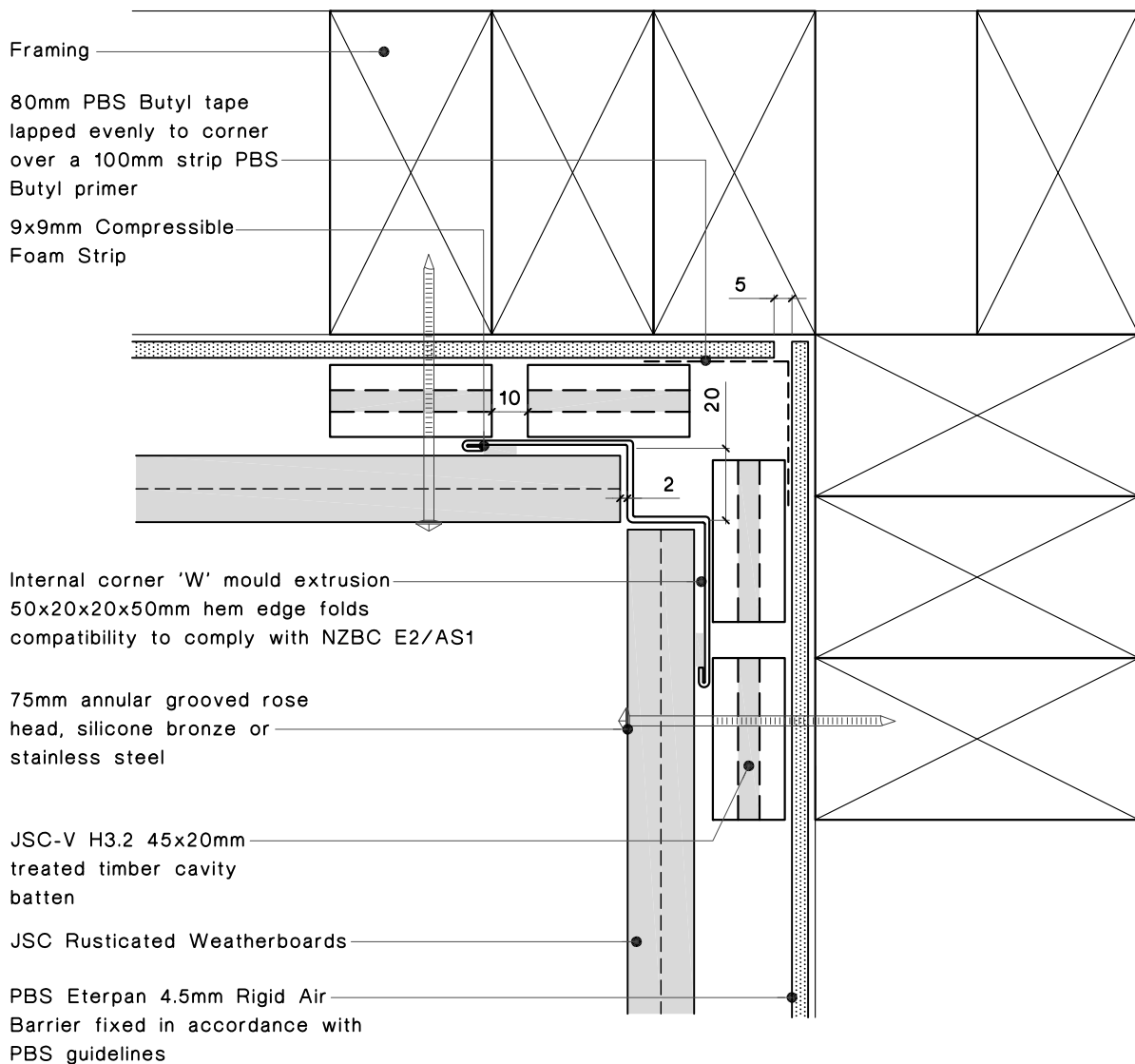
Date: 07/2009

Dwg:

**JR-FRAME**

## Notes:

- All nail fixings pre-drilled minimum 1mm diameter smaller than the nail gauge.
- All products to be pre-coated & cut edges to be sealed as per Branz Bulletin 411.
- All materials and fixtures are to comply with E2/AS1 Clause 2.2
- Provide PVC tape bond break between H3.2 battens and any flashing.
- Weatherboards fitted with a minimum gap of 2mm at the overlap between boards.
- Option PBS Rigid Air Barrier to be sealed with SikaGuard 703w to manufacturers specification.



## Internal corner detail

Rusticated Weatherboards Architectural Profile

**JSC Timber**

102 Main Road, Kumeu, Auckland, New Zealand  
 PO Box 285 Kumeu, Auckland 0841, New Zealand  
 Note: Details may be subject to change without notification

T.09 412-7722  
 F.09 412-7723  
[www.jsctimber.co.nz](http://www.jsctimber.co.nz)

Scale: 1:2

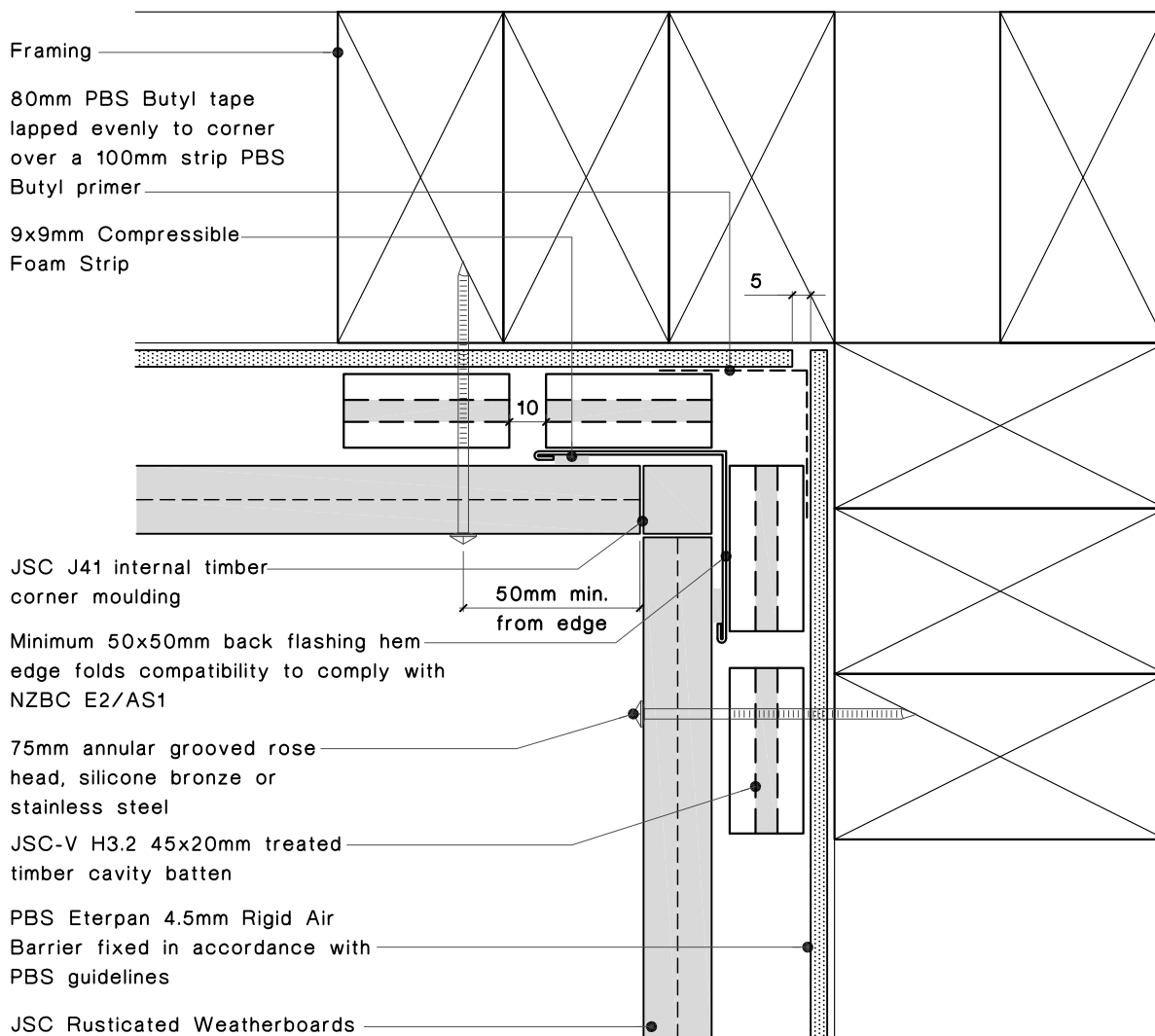
Date: 19/03/10

Dwg:

**JR-RB-01**

## Notes:

- All nail fixings pre-drilled minimum 1mm diameter smaller than the nail gauge.
- All products to be pre-coated & cut edges to be sealed as per Branz Bulletin 411.
- All materials and fixtures are to comply with E2/AS1 Clause 2.2
- Provide PVC tape bond break between H3.2 battens and any flashing.
- Weatherboards fitted with a minimum gap of 2mm at the overlap between boards.
- Option PBS Rigid Air Barrier to be sealed with SikaGuard 703w to manufacturers specification.



## Internal corner detail

Rusticated Weatherboards Architectural Profile

**JSC Timber**

102 Main Road, Kumeu, Auckland, New Zealand  
 PO Box 285 Kumeu, Auckland 0841, New Zealand  
 Note: Details may be subject to change without notification

T.09 412-7722  
 F.09 412-7723  
[www.jsctimber.co.nz](http://www.jsctimber.co.nz)

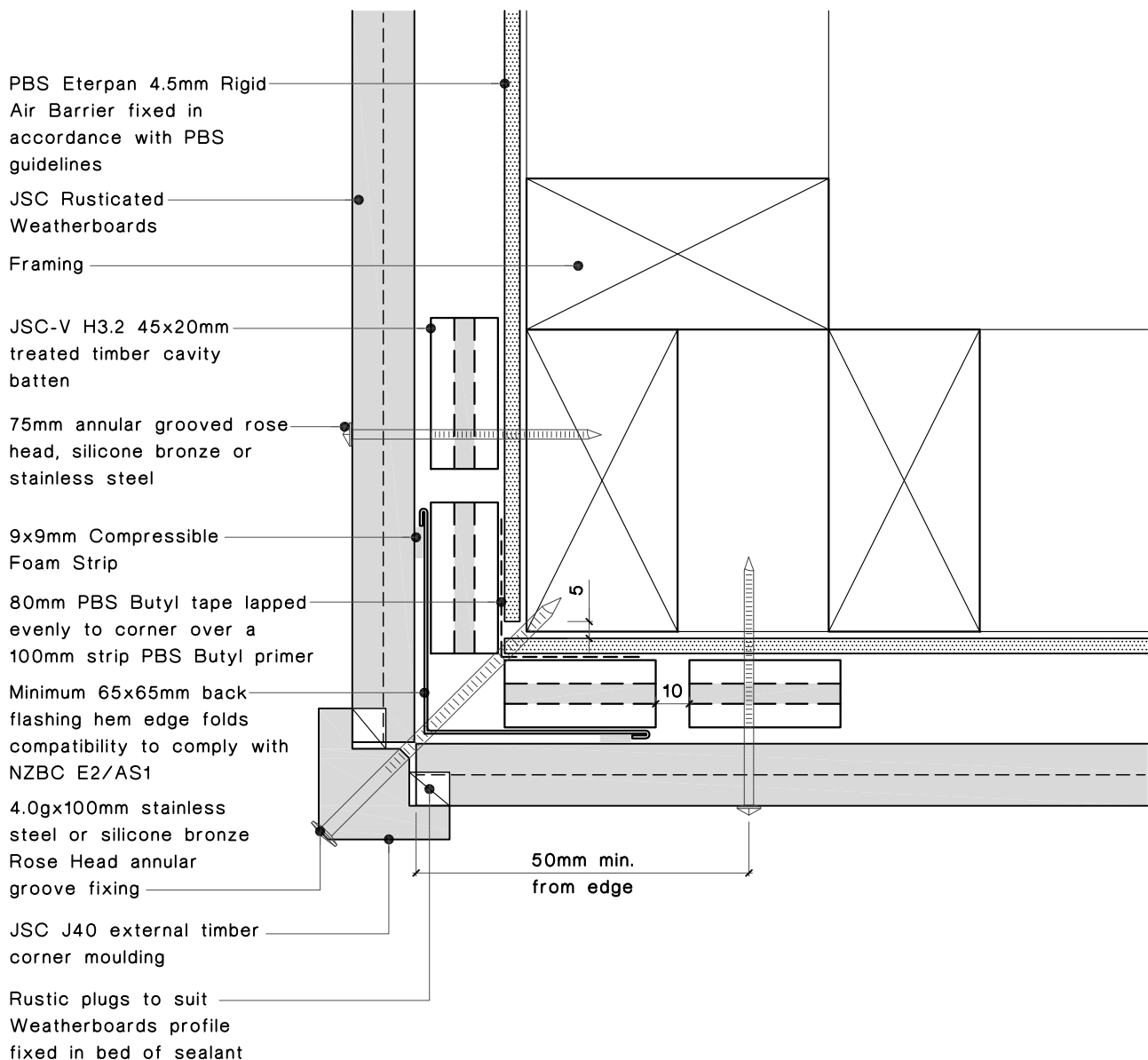
Scale: 1:2

Date: 19/03/10

Dwg:  
**JR-RB-02**

## Notes:

- All nail fixings pre-drilled minimum 1mm diameter smaller than the nail gauge.
- All products to be pre-coated & cut edges to be sealed as per Branz Bulletin 411.
- All materials and fixtures are to comply with E2/AS1 Clause 2.2
- Provide PVC tape bond break between H3.2 battens and any flashing.
- Weatherboards fitted with a minimum gap of 2mm at the overlap between boards.
- Option PBS Rigid Air Barrier to be sealed with SikaGuard 703w to manufacturers specification.



## External corner detail

Rusticated Weatherboards Architectural Profile

**JSC Timber**

102 Main Road, Kumeu, Auckland, New Zealand  
 PO Box 285 Kumeu, Auckland 0841, New Zealand  
 Note: Details may be subject to change without notification

T.09 412-7722  
 F.09 412-7723  
[www.jsctimber.co.nz](http://www.jsctimber.co.nz)

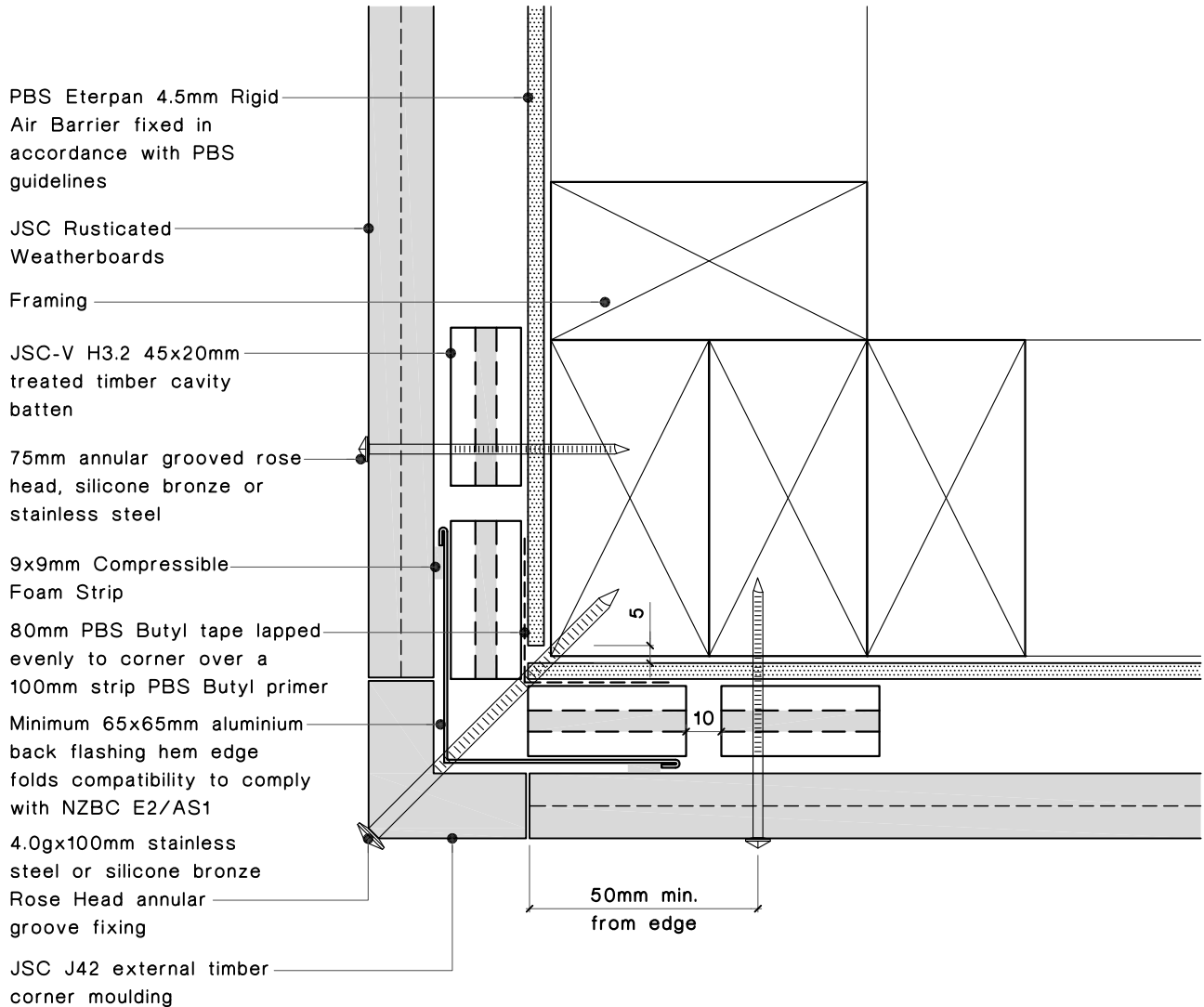
Scale: 1:2

Date: 19/03/10

Dwg:  
**JR-RB-03**

## Notes:

- All nail fixings pre-drilled minimum 1mm diameter smaller than the nail gauge.
- All products to be pre-coated & cut edges to be sealed as per Branz Bulletin 411.
- All materials and fixtures are to comply with E2/AS1 Clause 2.2
- Provide PVC tape bond break between H3.2 battens and any flashing.
- Weatherboards fitted with a minimum gap of 2mm at the overlap between boards.
- Option PBS Rigid Air Barrier to be sealed with SikaGuard 703w to manufacturers specification.



## External corner detail

Rusticated Weatherboards Architectural Profile

**JSC Timber**

102 Main Road, Kumeu, Auckland, New Zealand  
 PO Box 285 Kumeu, Auckland 0841, New Zealand  
 Note: Details may be subject to change without notification

T.09 412-7722  
 F.09 412-7723  
[www.jsctimber.co.nz](http://www.jsctimber.co.nz)

Scale: 1:2

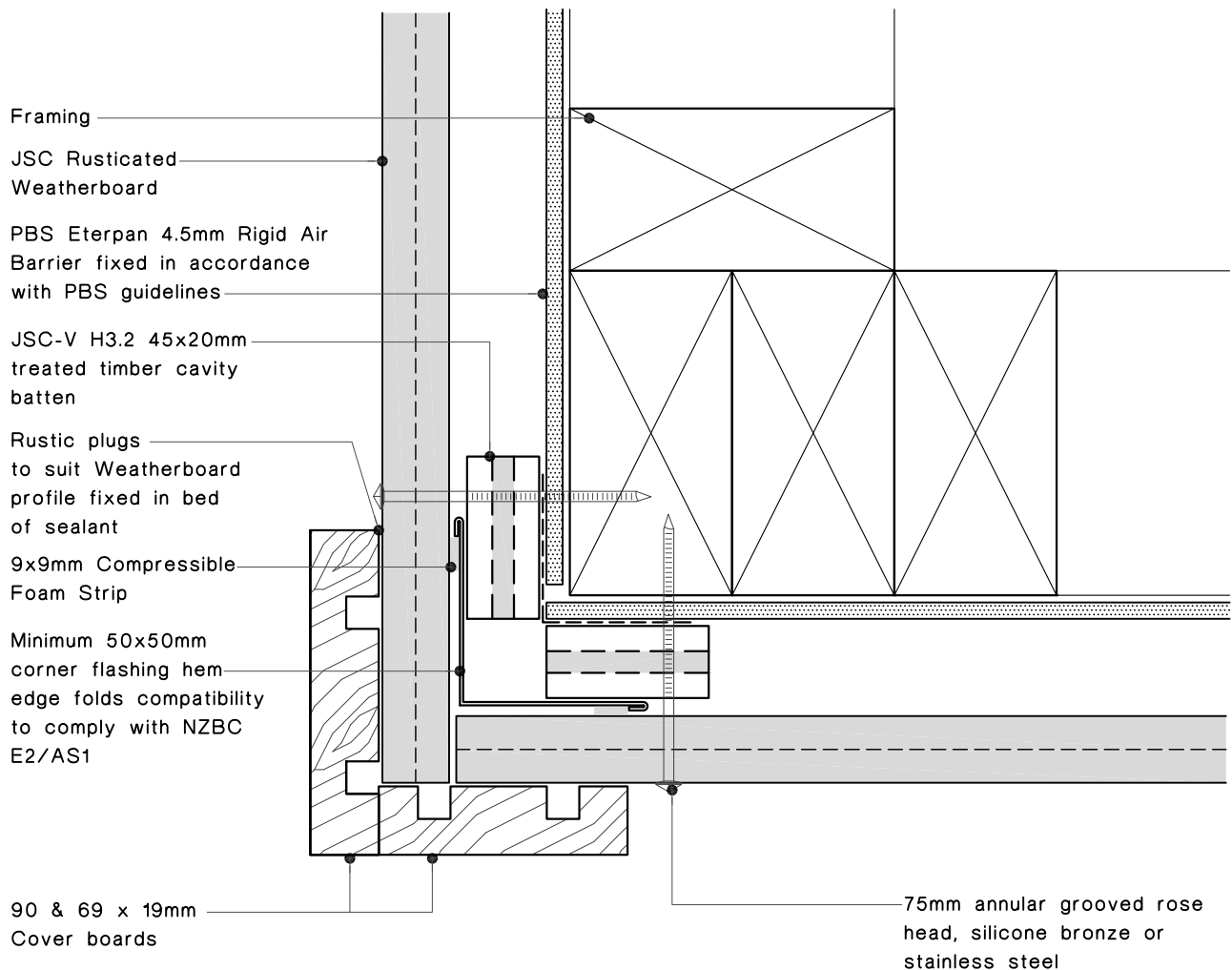
Date: 19/03/10

Dwg:  
**JR-RB-04**



## Notes:

- All nail fixings pre-drilled minimum 1mm diameter smaller than the nail gauge.
- All products to be precoated & cut edges to be sealed as per Branz Bulletin 411.
- All materials and fixtures are to comply with E2/AS1 Clause 2.2
- Provide PVC tape bond break between H3.2 battens and any flashing.
- Weatherboards fitted with a minimum gap of 2mm at the overlap between boards.
- Option PBS Rigid Air Barrier to be sealed with SikaGuard 703w to manufacturers specification.



## External corner detail

Rusticated Weatherboards Architectural Profile

**JSC Timber**

102 Main Road, Kumeu, Auckland, New Zealand  
 PO Box 285 Kumeu, Auckland 0841, New Zealand  
 Note: Details may be subject to change without notification

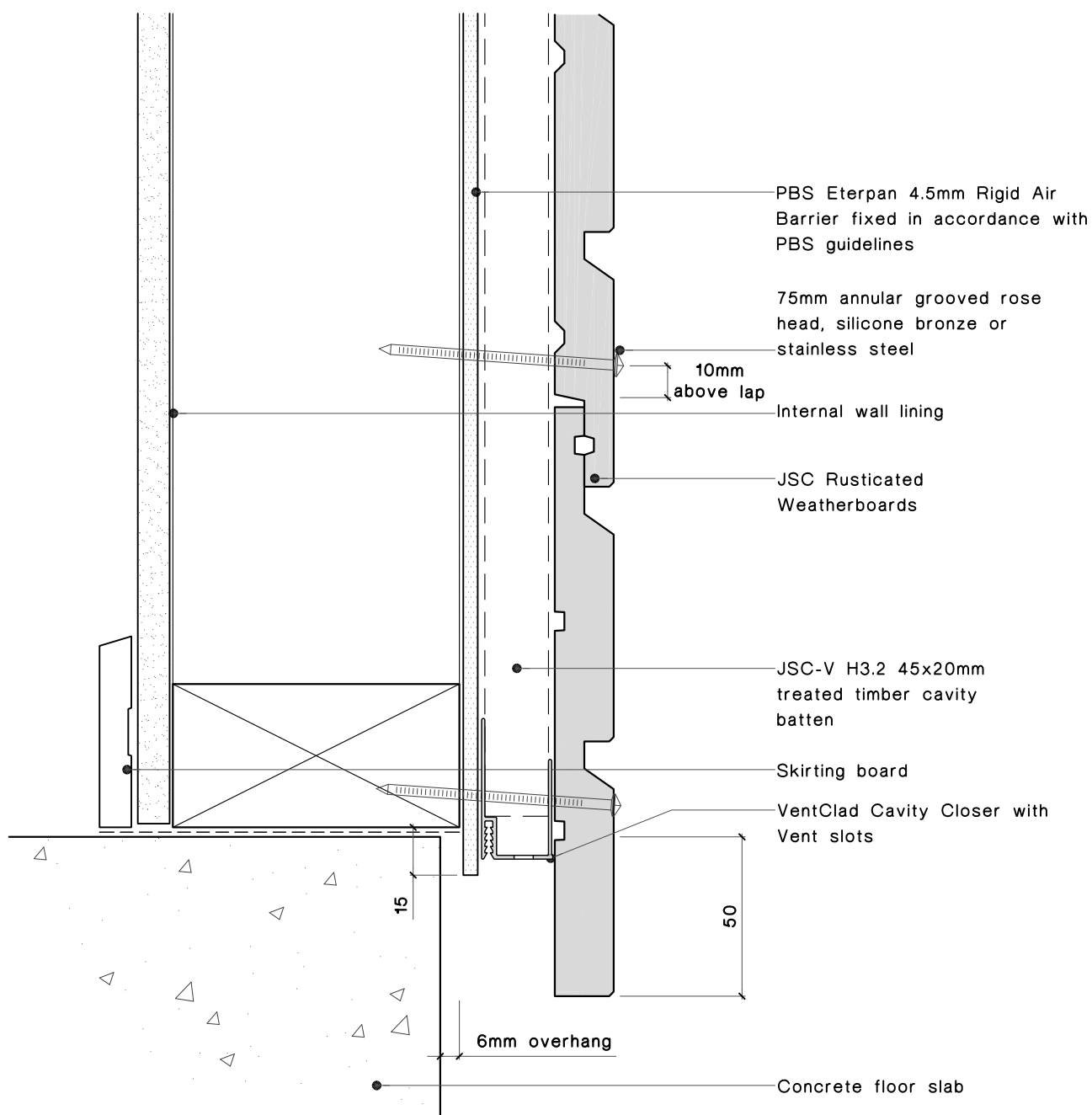
T.09 412-7722  
 F.09 412-7723  
[www.jsctimber.co.nz](http://www.jsctimber.co.nz)

Scale: 1:2

Date: 19/03/10

Dwg:

**JR-RB-05**



## Notes:

- All nail fixings pre-drilled minimum 1mm diameter smaller than the nail gauge.
- All products to be pre-coated & cut edges to be sealed as per Branz Bulletin 411.
- All materials and fixtures are to comply with E2/AS1 Clause 2.2
- Provide PVC tape bond break between H3.2 battens and any flashing.
- Weatherboards fitted with a minimum gap of 2mm at the overlap between boards.
- Option PBS Rigid Air Barrier to be sealed with SikaGuard 703w to manufacturers specification.

## Bottom Plate detail

Rusticated Weatherboards Architectural Profile

**JSC Timber**

102 Main Road, Kumeu, Auckland, New Zealand  
PO Box 285 Kumeu, Auckland 0841, New Zealand  
Note: Details may be subject to change without notification

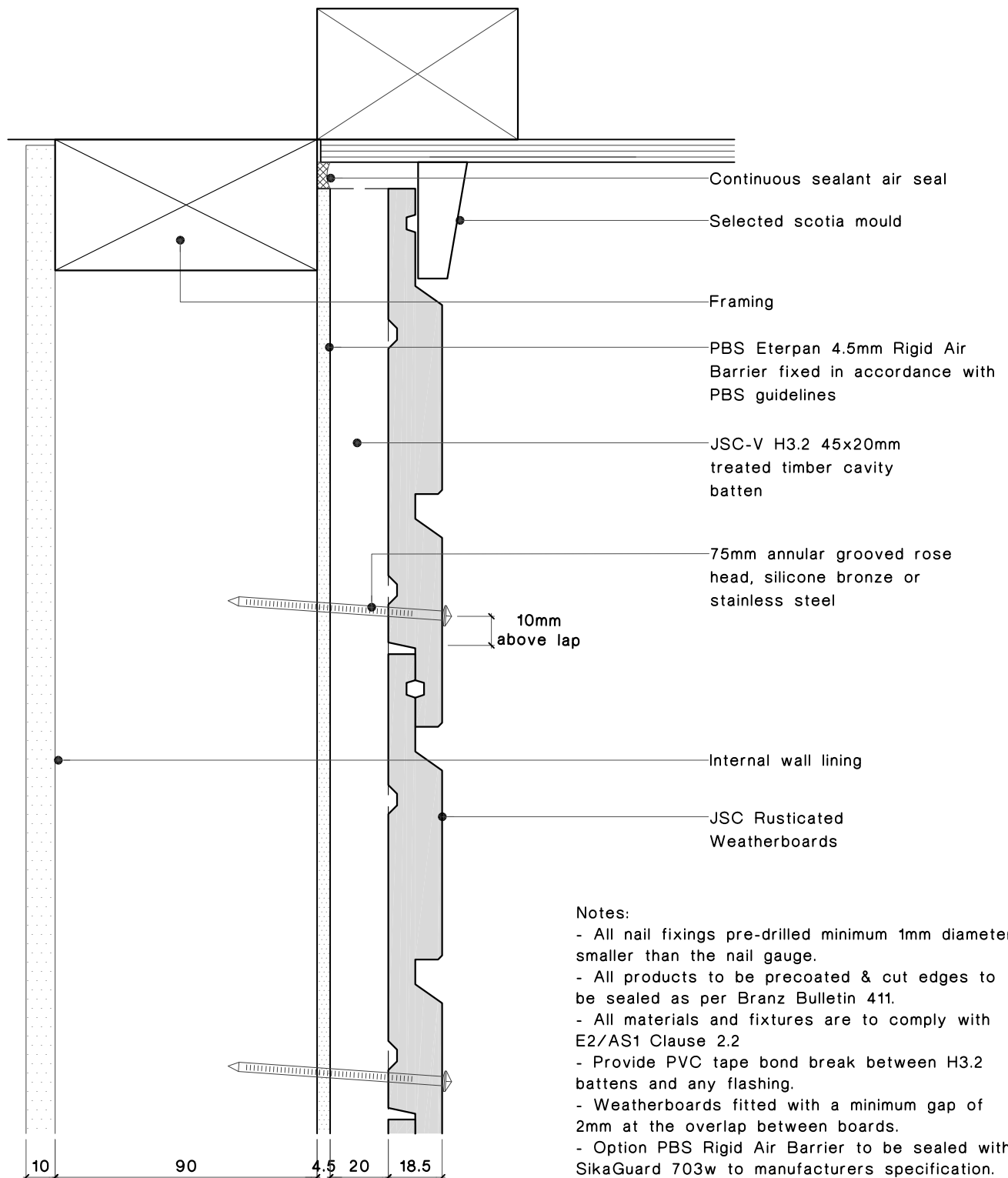
T.09 412-7722  
F.09 412-7723  
[www.jsctimber.co.nz](http://www.jsctimber.co.nz)

Scale: 1:2

Date: 19/03/10

Dwg:

**JR-RB-07**



## Top Plate to Soffit detail

### Rusticated Weatherboards Architectural Profile

**JSC Timber**

102 Main Road, Kumeu, Auckland, New Zealand  
PO Box 285 Kumeu, Auckland 0841, New Zealand

Note: Details may be subject to change without notification

T.09 412-7722

F.09 412-7723

[www.jsctimber.co.nz](http://www.jsctimber.co.nz)

Scale: 1:2

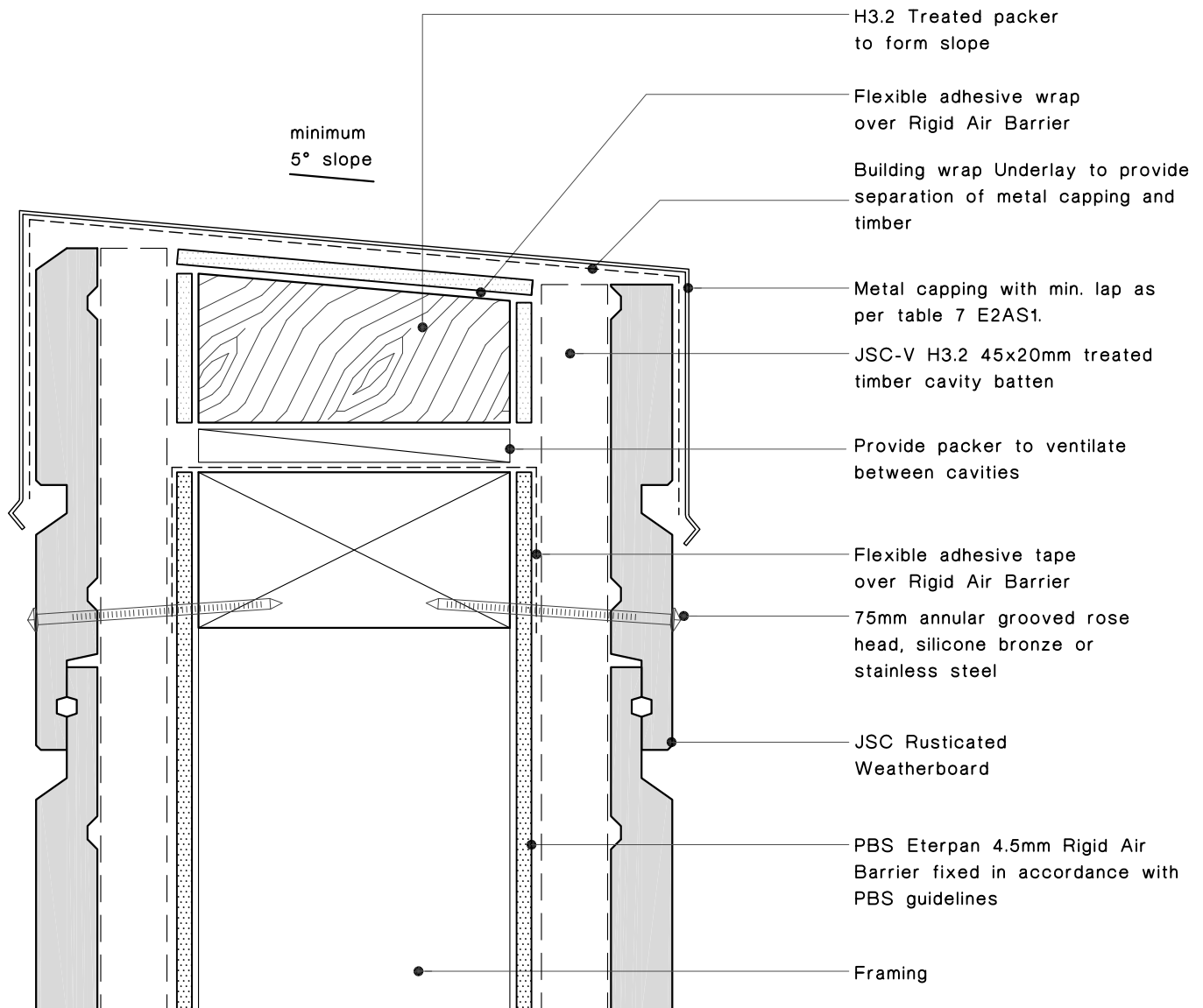
Date: 19/03/10

Dwg:

**JR-RB-08**

## Notes:

- All nail fixings pre-drilled minimum 1mm diameter smaller than the nail gauge.
- All products to be precoated & cut edges to be sealed as per Branz Bulletin 411.
- All materials and fixtures are to comply with E2/AS1 Clause 2.2
- Provide PVC tape bond break between H3.2 battens and any flashing.
- Weatherboards fitted with a minimum gap of 2mm at the overlap between boards.
- Option PBS Rigid Air Barrier to be sealed with SikaGuard 703w to manufacturers specification.



## Parapet detail

Rusticated Weatherboards Architectural Profile

**JSC Timber**

102 Main Road, Kumeu, Auckland, New Zealand  
PO Box 285 Kumeu, Auckland 0841, New Zealand

T.09 412-7722  
F.09 412-7723  
[www.jsctimber.co.nz](http://www.jsctimber.co.nz)

Note: Details may be subject to change without notification

Scale: 1:2

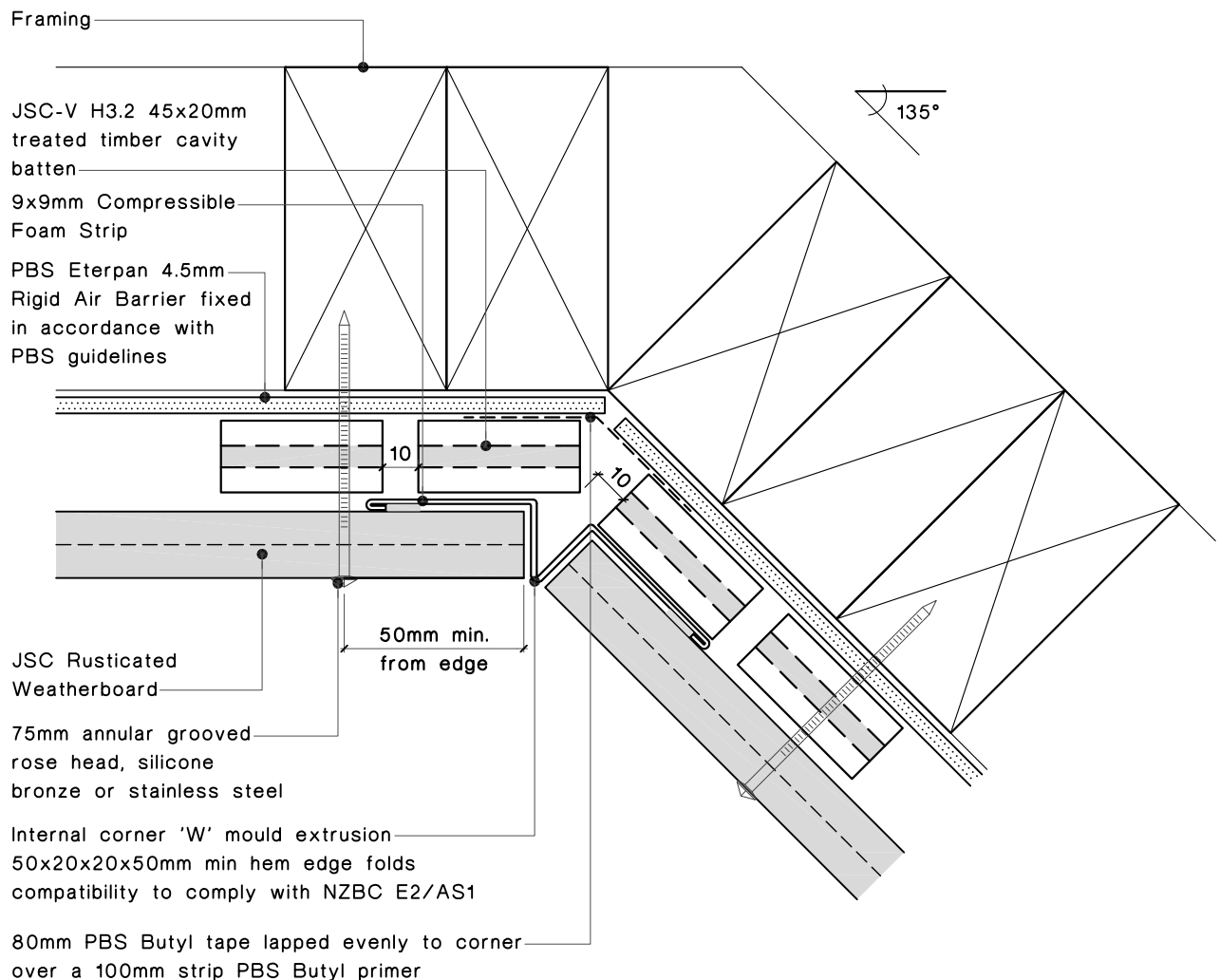
Date: 20/10/11

Dwg:

**JR-RB-09**

## Notes:

- All nail fixings pre-drilled minimum 1mm diameter smaller than the nail gauge.
- All products to be pre-coated & cut edges to be sealed as per Branz Bulletin 411.
- All materials and fixtures are to comply with E2/AS1 Clause 2.2
- Provide PVC tape bond break between H3.2 battens and any flashing.
- Weatherboards fitted with a minimum gap of 2mm at the overlap between boards.
- Option PBS Rigid Air Barrier to be sealed with SikaGuard 703w to manufacturers specification.



## Internal corner detail

Rusticated Weatherboards Architectural Profile

**JSC Timber**

102 Main Road, Kumeu, Auckland, New Zealand  
 PO Box 285 Kumeu, Auckland 0841, New Zealand  
 Note: Details may be subject to change without notification

T.09 412-7722  
 F.09 412-7723  
[www.jsctimber.co.nz](http://www.jsctimber.co.nz)

Scale: 1:2

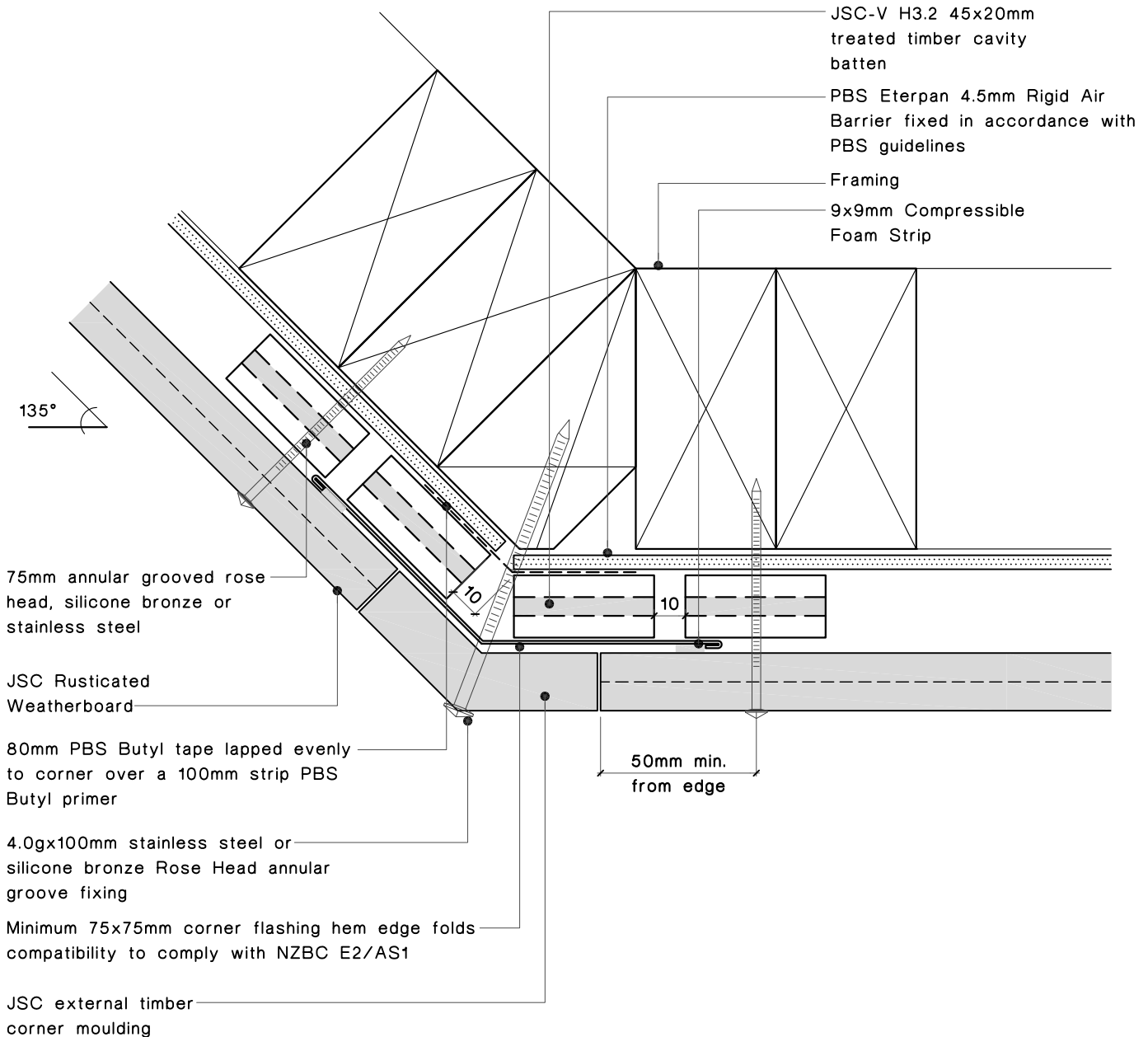
Date: 19/03/10

Dwg:

**JR-RB-10**

## Notes:

- All nail fixings pre-drilled minimum 1mm diameter smaller than the nail gauge.
- All products to be precoated & cut edges to be sealed as per Branz Bulletin 411.
- All materials and fixtures are to comply with E2/AS1 Clause 2.2
- Provide PVC tape bond break between H3.2 battens and any flashing.
- Weatherboards fitted with a minimum gap of 2mm at the overlap between boards.



## External corner detail

Rusticated Weatherboards Architectural Profile

**JSC Timber**

102 Main Road, Kumeu, Auckland, New Zealand  
PO Box 285 Kumeu, Auckland 0841, New Zealand

Note: Details may be subject to change without notification

T.09 412-7722

F.09 412-7723

[www.jsctimber.co.nz](http://www.jsctimber.co.nz)

Scale: 1:2

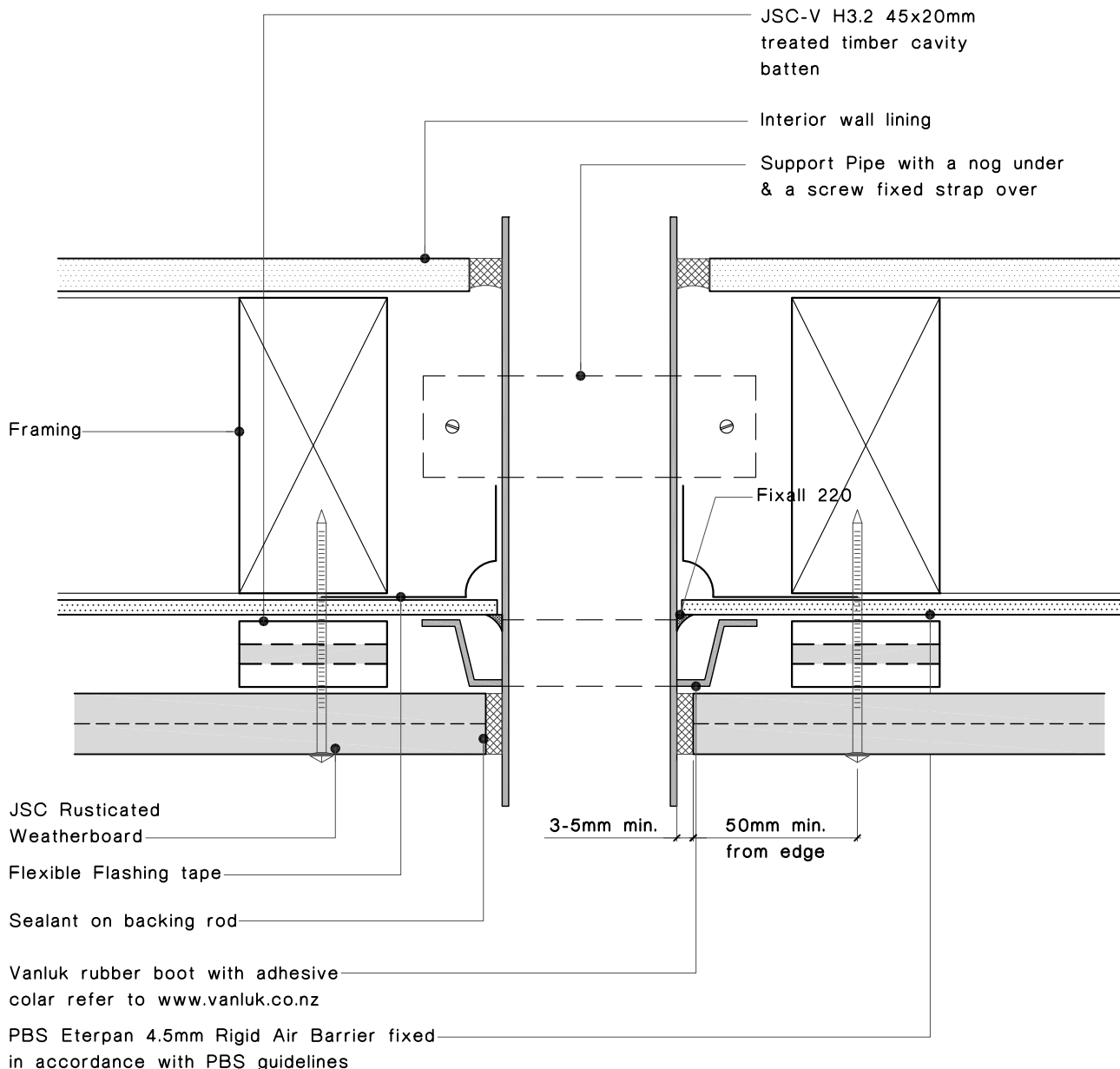
Date: 19/03/10

Dwg:

**JR-RB-11**

Notes:

- All nail fixings pre-drilled minimum 1mm diameter smaller than the nail gauge.
- All products to be precoated & cut edges to be sealed as per Branz Bulletin 411.
- All materials and fixtures are to comply with E2/AS1 Clause 2.2
- Provide PVC tape bond break between H3.2 battens and any flashing.
- Weatherboards fitted with a minimum gap of 2mm at the overlap between boards.
- Option PBS Rigid Air Barrier to be sealed with SikaGuard 703w to manufacturers specification.

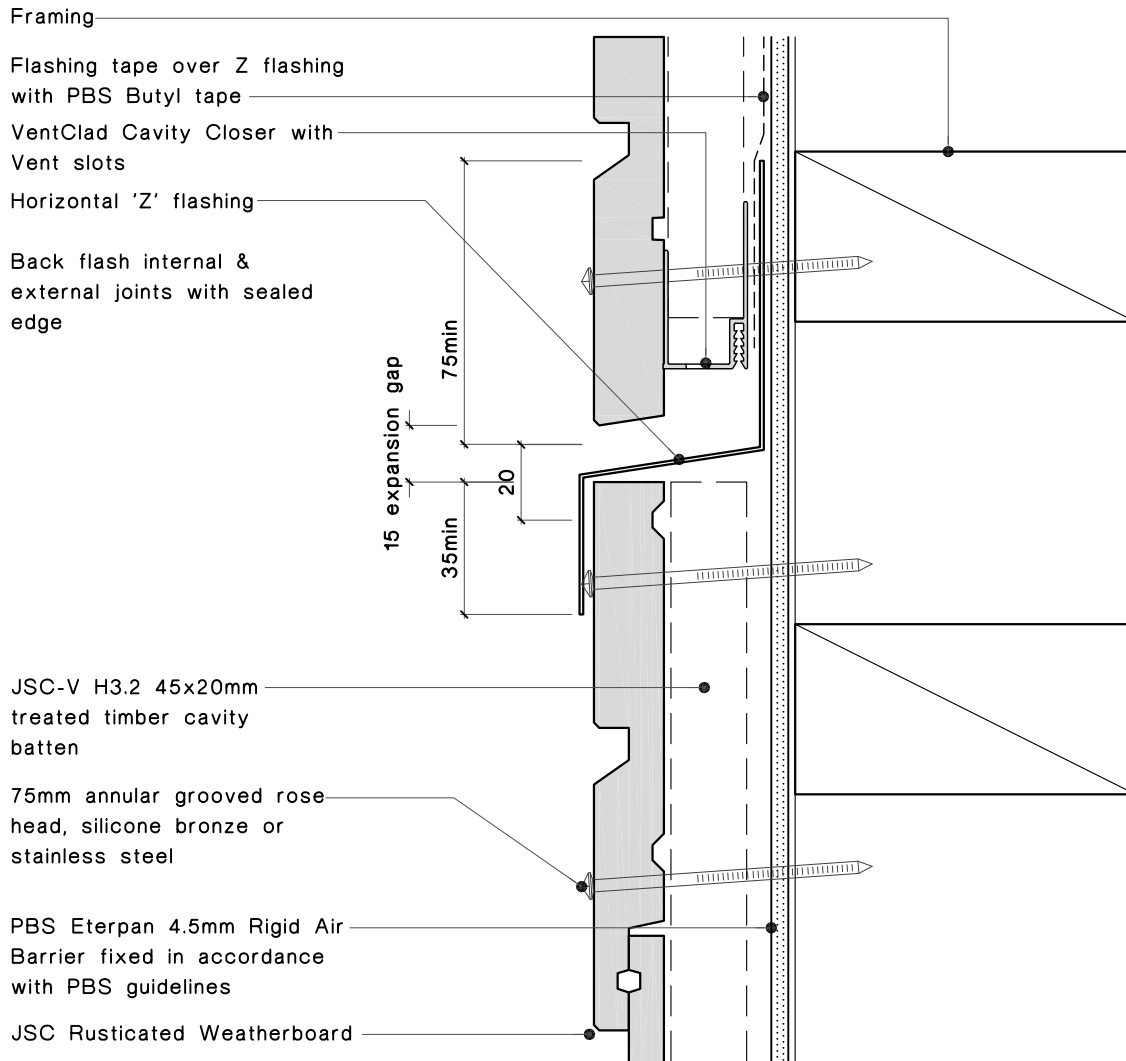


## Pipe Penetration detail

Rusticated Weatherboards Architectural Profile

## Notes:

- All nail fixings pre-drilled minimum 1mm diameter smaller than the nail gauge.
- All products to be precoated & cut edges to be sealed as per Branz Bulletin 411.
- All materials and fixtures are to comply with E2/AS1 Clause 2.2
- Provide PVC tape bond break between H3.2 battens and any flashing.
- Weatherboards fitted with a minimum gap of 2mm at the overlap between boards.
- Option PBS Rigid Air Barrier to be sealed with SikaGuard 703w to manufacturers specification.



## Horizontal Joint Detail

Rusticated Weatherboards Architectural Profile

## JSC Timber

102 Main Road, Kumeu, Auckland, New Zealand  
 PO Box 285 Kumeu, Auckland 0841, New Zealand  
 Note: Details may be subject to change without notification

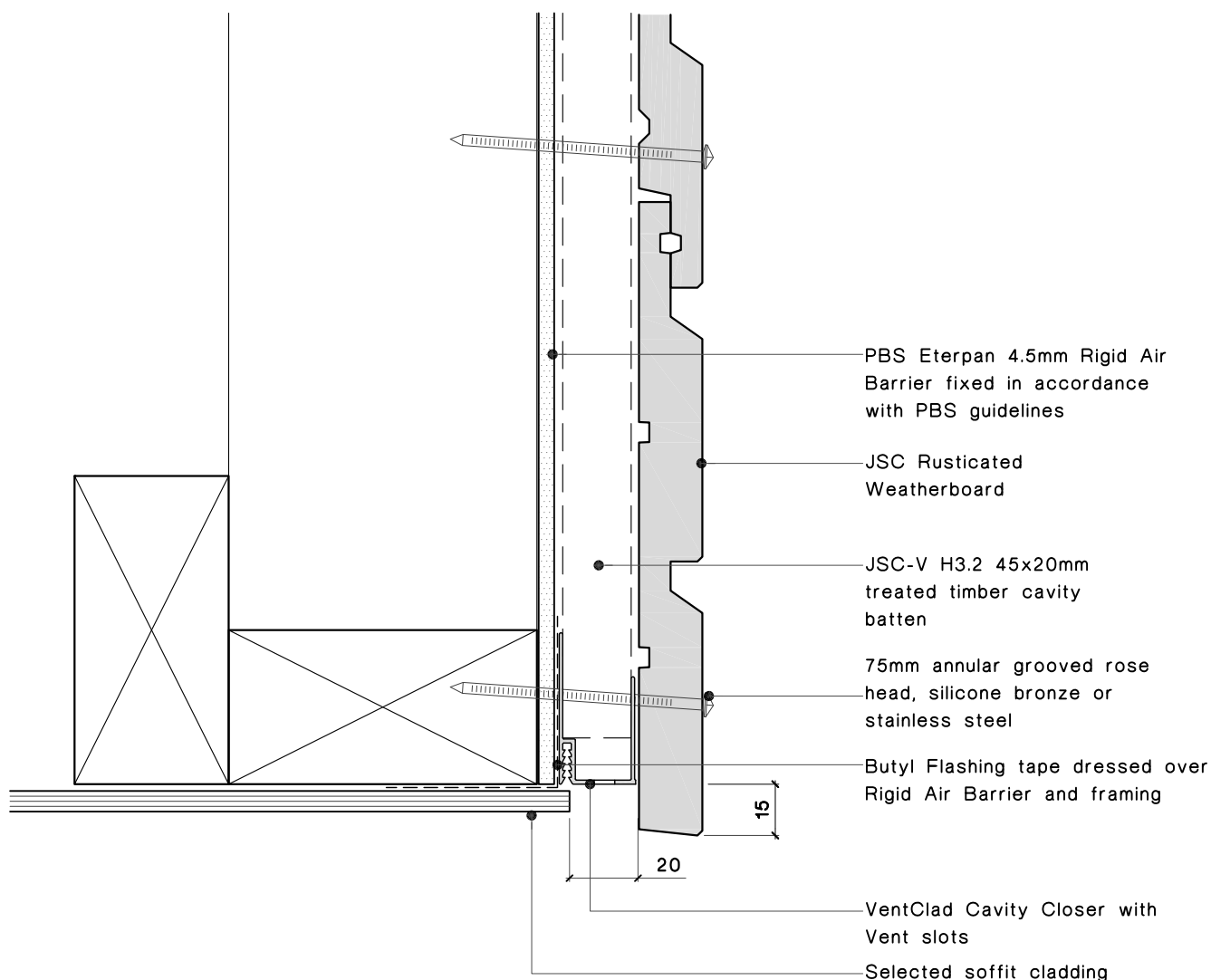
T.09 412-7722  
 F.09 412-7723  
[www.jsctimber.co.nz](http://www.jsctimber.co.nz)

Scale: 1:2

Date: 19/03/10

Dwg:  
**JR-RB-13**





## Notes:

- All nail fixings pre-drilled minimum 1mm diameter smaller than the nail gauge.
- All products to be pre-coated & cut edges to be sealed as per Branz Bulletin 411.
- All materials and fixtures are to comply with E2/AS1 Clause 2.2
- Provide PVC tape bond break between H3.2 battens and any flashing.
- Weatherboards fitted with a minimum gap of 2mm at the overlap between boards.
- Option PBS Rigid Air Barrier to be sealed with SikaGuard 703w to manufacturers specification.

## Soffit detail

Rusticated Weatherboards Architectural Profile

**JSC Timber**

102 Main Road, Kumeu, Auckland, New Zealand  
PO Box 285 Kumeu, Auckland 0841, New Zealand

Note: Details may be subject to change without notification

T.09 412-7722

F.09 412-7723

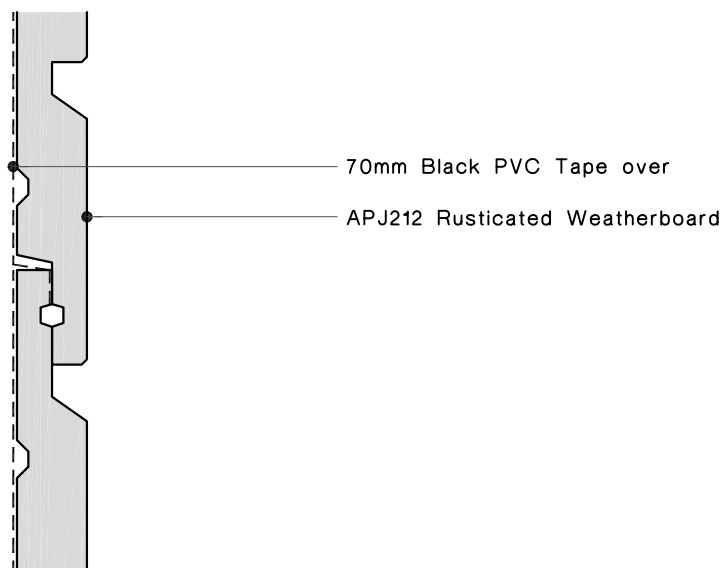
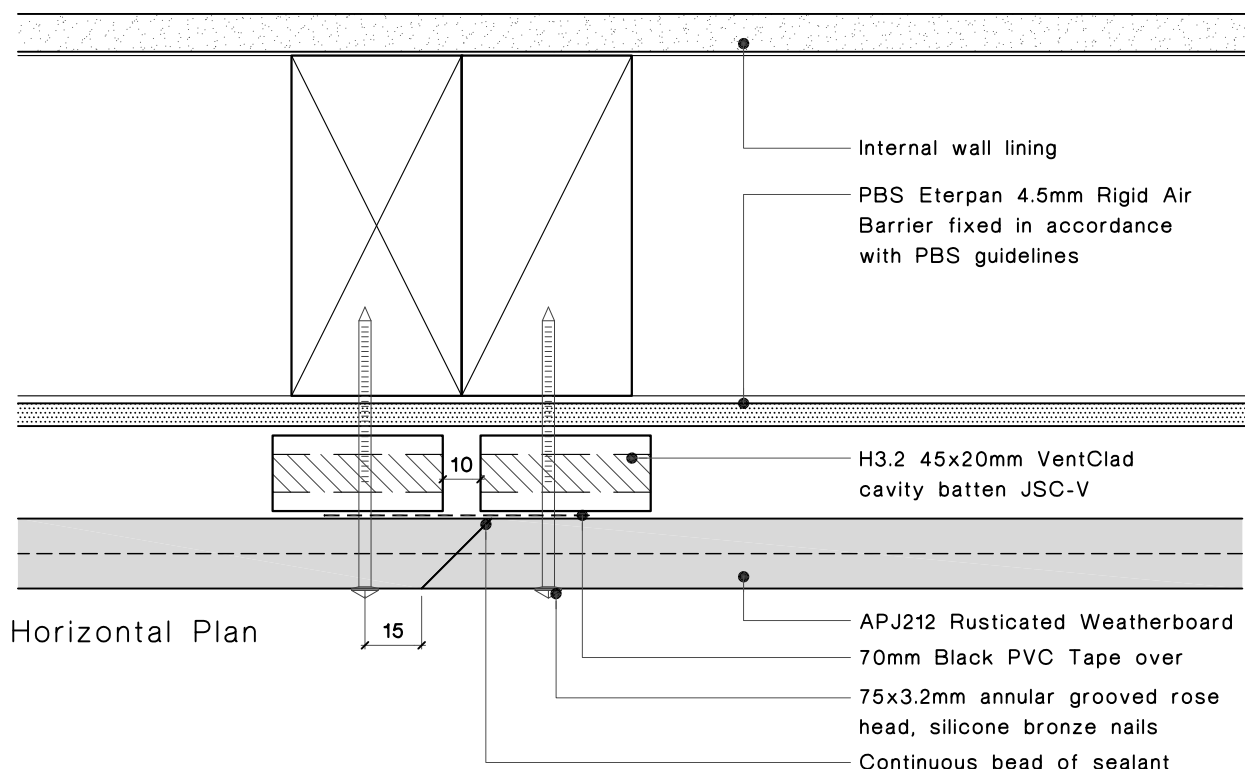
[www.jsctimber.co.nz](http://www.jsctimber.co.nz)

Scale: 1:2

Date: 19/03/10

Dwg:

**JR-RB-14**



#### Notes:

- All nail fixings pre-drilled minimum 1mm diameter smaller than the nail gauge.
- All products to be pre-coated & cut edges to be sealed as per Branz Bulletin 411.
- All materials and fixtures are to comply with E2/AS1 Clause 2.2
- Provide PVC tape bond break between H3.2 battens and any flashing.
- Weatherboards fitted with a minimum gap of 2mm at the overlap between boards.
- Option PBS Rigid Air Barrier to be sealed with SikaGuard 703w to manufacturers specification.

## Scarf Jointing detail

Rusticated Weatherboards Architectural Profile

**JSC Timber**

102 Main Road, Kumeu, Auckland, New Zealand  
PO Box 285 Kumeu, Auckland 0841, New Zealand  
Note: Details may be subject to change without notification

T.09 412-7722  
F.09 412-7723  
[www.jsctimber.co.nz](http://www.jsctimber.co.nz)

Scale: 1:2

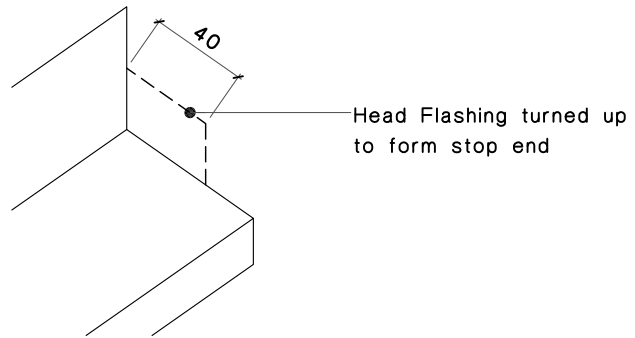
Date: 19/03/10

Dwg:

**JR-RB-15**

## Notes:

- All nail fixings pre-drilled minimum 1mm diameter smaller than the nail gauge.
- All products to be precoated & cut edges to be sealed as per Branz Bulletin 411.
- All materials and fixtures are to comply with E2/AS1 Clause 2.2
- Provide PVC tape bond break between H3.2 battens and any flashing.
- Weatherboards fitted with a minimum gap of 2mm at the overlap between boards.
- Option PBS Rigid Air Barrier to be sealed with SikaGuard 703w to manufacturers specification.



75mm annular grooved rose head, silicone bronze or stainless steel

Gib board

JSC Rusticated Weatherboards

JSC-V H3.2 45x20mm treated timber cavity batten

Flashing tape over head flashing with PBS Butyl tape

PBS Eterpan 4.5mm Rigid Air Barrier fixed in accordance with PBS guidelines

Stop end at head flashing  
Head flashing turned up to form stop end

Proprietary prefolded head flashing with 15° fall

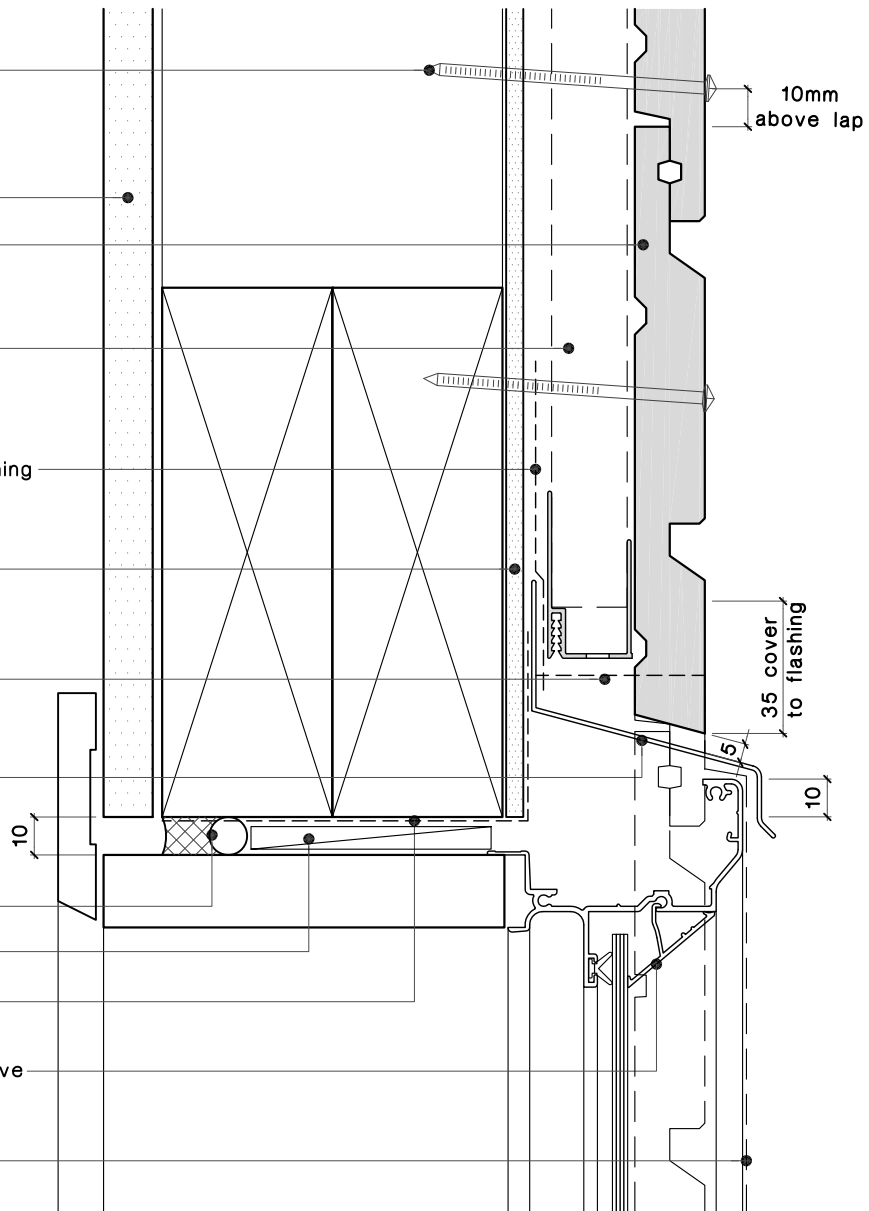
Continuous air seal to perimeter of opening

Packer

PBS detail tape 2 piece with spray tack adhesive

P/C aluminium joinery indicative profile

Line of jamb scribe



## Aluminium Head detail

Rusticated Weatherboards Architectural Profile

## JSC Timber

102 Main Road, Kumeu, Auckland, New Zealand  
PO Box 285 Kumeu, Auckland 0841, New Zealand  
Note: Details may be subject to change without notification

T.09 412-7722  
F.09 412-7723  
[www.jsctimber.co.nz](http://www.jsctimber.co.nz)

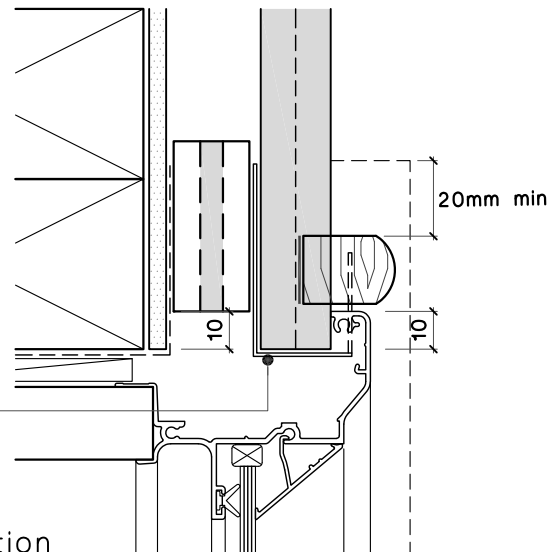
Scale: 1:2

Date: 19/03/10

Dwg:  
**JR-RB-20**

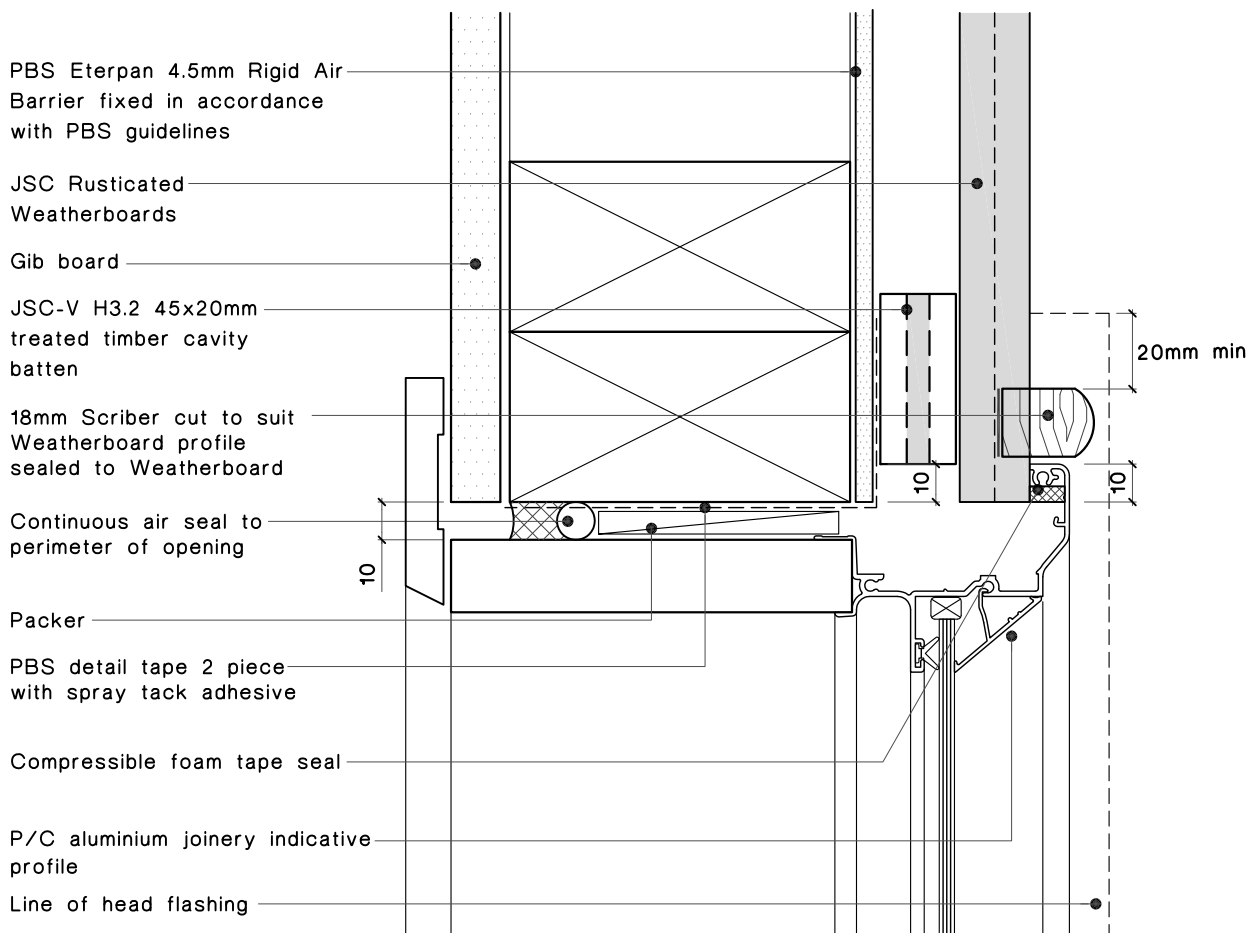
## Notes:

- All nail fixings pre-drilled minimum 1mm diameter smaller than the nail gauge.
- All products to be pre-coated & cut edges to be sealed as per Branz Bulletin 411.
- All materials and fixtures are to comply with E2/AS1 Clause 2.2
- Provide PVC tape bond break between H3.2 battens and any flashing.
- Weatherboards fitted with a minimum gap of 2mm at the overlap between boards.
- Option PBS Rigid Air Barrier to be sealed with SikaGuard 703w to manufacturers specification.



Optional: folded 0.9mm jamb flashing. Allow to return flashing to suit weatherboard depth. When using Random Depth boards use 'U' Bracket sized to suit

Alternate Option



## Aluminium Jamb detail

Rusticated Weatherboards Architectural Profile

## JSC Timber

102 Main Road, Kumeu, Auckland, New Zealand  
PO Box 285 Kumeu, Auckland 0841, New Zealand

Note: Details may be subject to change without notification

T.09 412-7722

F.09 412-7723

[www.jsctimber.co.nz](http://www.jsctimber.co.nz)

Scale: 1:2

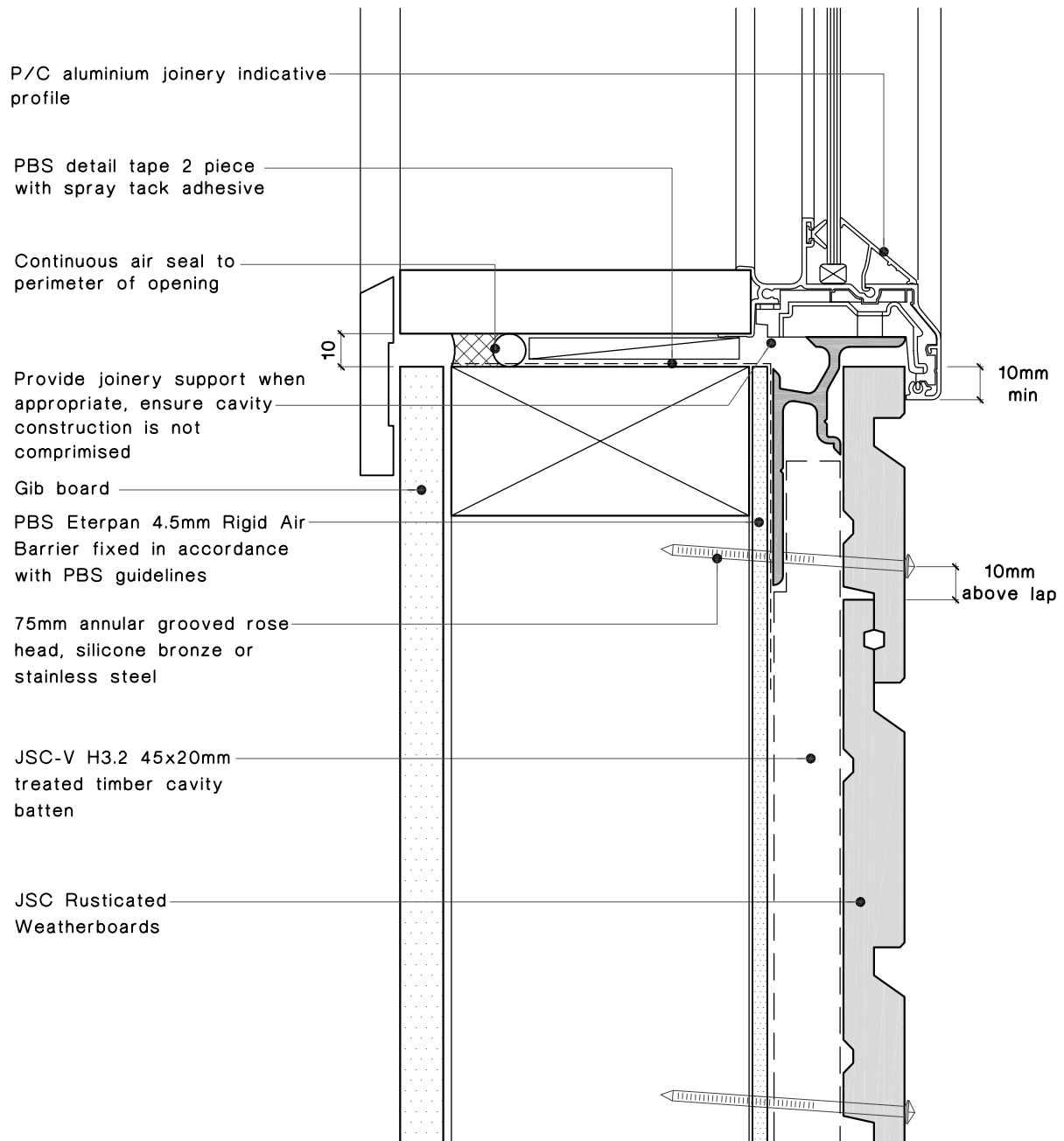
Date: 19/03/10

Dwg:

JR-RB-21

Notes:

- All nail fixings pre-drilled minimum 1mm diameter smaller than the nail gauge.
- All products to be precoated & cut edges to be sealed as per Branz Bulletin 411.
- All materials and fixtures are to comply with E2/AS1 Clause 2.2
- Provide PVC tape bond break between H3.2 battens and any flashing.
- Weatherboards fitted with a minimum gap of 2mm at the overlap between boards.
- Option PBS Rigid Air Barrier to be sealed with SikaGuard 703w to manufacturers specification.



## Aluminium Window Sill detail

### Rusticated Weatherboards Architectural Profile