

**JSCTimber**

**JSC VertiClad**

**Vertical Shiplap Weatherboard System**

**Random Width & Depth Solution**

**Cavity on Rigid Air Barrier**

[www.jsctimber.co.nz](http://www.jsctimber.co.nz)

[www.cedarspec.co.nz](http://www.cedarspec.co.nz)

**JSC CedarShield**  
Factory Applied Coating System

VERTICAL SHIPLAP RANDOM WIDTH + DEPTH WEATHERBOARD

DRAWING INDEX - JVR-RB-00

Product	Application	Detail	Description	Issued
JVR	RB	Index	Drawing index	9-06-2010
JVR	IG	01	Product installation guidelines	9-06-2010
JVR	IG	02	Product installation guidelines	9-06-2010
JVR	IG	03	Product installation guidelines	9-06-2010
JVR	RB	KN	General installation keynotes	9-06-2010
JVR	RB	01	Aluminium window head detail	9-06-2010
JVR	RB	02	Aluminium window jamb detail	9-06-2010
JVR	RB	03	Aluminium window sill detail	9-06-2010
JVR	RB	04	Internal corner detail - L flashing	9-06-2010
JVR	RB	05	External corner detail - flush corner	9-06-2010
JVR	RB	06	External corner detail - cover boards	9-06-2010
JVR	RB	07	Bottom plate detail	9-06-2010
JVR	RB	08	Top plate to soffit detail	9-06-2010
JVR	RB	09	Parapet detail	9-06-2010
JVR	RB	11	External corner detail - 135 degree wall	9-06-2010
JVR	RB	12	Pipe penetration detail	9-06-2010
JVR	RB	13	Horizontal joint detail	9-06-2010
JVR	RB	14	Soffit detail	9-06-2010
JVR	RB	15	Scarf jointing detail	9-06-2010
JV	RB	16	Internal corner detail - Horizontal joint	9-06-2010
JV	RB	17	External corner detail - Horizontal joint	9-06-2010
JV	RB	18	External corner detail - Horizontal joint - 45 & 135 degree	9-06-2010
JVR	RB	19	Internal corner detail	9-06-2010
JVR	RB	20	External corner detail	9-06-2010
JVR	RB	21	External corner detail	9-06-2010

**General installation keynotes**

General keynotes



102 Main Road, Kumeu, Auckland, New Zealand  
PO Box 285 Kumeu, Auckland 0841, New Zealand

Note: Details may be subject to change without notification

T.09 412-7722

F.09 412-7723

[www.jsctimber.co.nz](http://www.jsctimber.co.nz)

Scale: NTS

Date: 09/06/10

Dwg:

**JVR-RB-00**

## JSC Timber Installation guide for Vertical Shiplap Weatherboards 2009

### Timber Species:

JSC Timber Western Red Cedar (Thuja Plicata) Ref: [www.jsctimber.co.nz](http://www.jsctimber.co.nz) for technical specification.

### Weatherboards:

JSC Timber Western Red Cedar weatherboards to manufacturer's profile and to NZS 3617 or BRANZ BU 411, grading to NZS 3631, species and durability to NZS 3602, table 2, reference 2A.1, Requirements for wood-based building components to achieve a 15-year durability performance. Weatherboards in lengths to suit specific weatherboard type and construction method with all loose knots and bark encased knots removed. Profile as per specification, profile range available Ref: [www.jsctimber.co.nz](http://www.jsctimber.co.nz)

### Storage:

Take delivery of JSC Timber, dry, unmarked and undamaged. Store on site, laid flat and true under cover. JSC Timber should only be unpackaged once weatherboard installation process has commenced.

### Substrate:

Before starting fixing ensure that the substrate conforms to NZS 3604, section 2, table 2.1 Timber framing tolerances and the requirements of NZS 3604, sections 6 and 11 governing support for timber board cladding.

### Moisture content:

Immediately before starting fixing, test the moisture content of the boards. Use an electrical moisture meter to test 5% of boards, but not less than 10 boards, in the centre of the length. Do not start fixing until 90% of the values obtained are within the range in NZS 3602 table 4, Allowable Moisture Content (%), at time of installation or in the case of framing timber at time of enclosure.

### Building wraps and underlay's:

Breather type, waterproof, to NZBC E2/AS1, table 23: Properties of roof underlays and building wraps. Intermediate means of restraining the building wrap and insulation from bulging into the drained cavity. Apply polypropylene tape at 300mm centres, Nogs/Dwangs shall be at a maximum 480mm centres.

## Product installation guidelines

### Vertical Shiplap Weatherboards Architectural Profile



102 Main Road, Kumeu, Auckland, New Zealand  
PO Box 285 Kumeu, Auckland 0841, New Zealand  
Note: Details may be subject to change without notification

T.09 412-7722  
F.09 412-7723  
[www.jsctimber.co.nz](http://www.jsctimber.co.nz)

Scale: 1:2

Date: 09/06/10

Dwg:  
**JVR-IG-01**

## JSC Timber Installation guide for Vertical Shiplap Weatherboards 2009

### Exterior cavity wall battens:

Radiata pine battens VertiClad battens H3.2 CCA treated, minimum 20mm thickness, width and height to match timber framing studs with 18 degree slope with 20mm x 7mm castellation to both faces JSC Verticlad JSC-V and JSC-H cavity battens. Temporary fix battens before being fixed into the framing with the cladding fixings. To NZS 3602, table 1, reference 1D.10, Requirements for wood-based building components to achieve a 50-year durability performance. Ref JSC Verticlad JV-RB and JV-C fixing details.

**Nails/Fixings:** Refer to Manufacturer for fixing details and specific fixing sizes.

### Nails, Silicon Bronze:

JSC Timber rose head annular groove silicone bronze fixings to NZBC E2/AS1 Table 24. Check material compatibility as per table 21 and 22, NZBC E2/AS1.

### Nails, Stainless Steel 316:

JSC Timber rose head annular groove 316 stainless steel fixings to NZBC E2/AS1 Table 24. Check material compatibility as per table 21 and 22, NZBC E2/AS1.

### Nails, Stainless Steel 316 Jolt Head paint finish only:

JSC Jolt head nails are annular grooved 316 stainless steel fixings to NZBC E2/AS1 Table 24. Check material compatibility as per table 21 and 22, NZBC E2/AS1.

### Flashing:

Material, grade and colour as detailed and scheduled and to NZBC E2/AS1; table 21: Compatibility of materials in contact and table 22: Compatibility of materials subject to runoff. Ensure that materials used for flashings are compatible with the window frame materials and fixings and cladding materials and fixings. Refer to JSC Timber for fixing details and technical specification and JSC flashing detail selection page.

### Horizontal Lap: Vertical Shiplap Weatherboards.

25mm vertical lap for a rebated vertical shiplap weatherboard with a minimum 2mm gap at the overlap between boards.

### Fixing Vertical Shiplap Weatherboards:

Adjust set-out to ensure there is a 2mm expansion gap between successive boards use JSC spacer tool (nogs/dwangs at 400mm to 480mm centres). Single nailing weatherboards just clear of lap. Nails to be driven in with an upward slope. Line nails horizontally across the boards.

## Product installation guidelines

### Vertical Shiplap Weatherboards Architectural Profile



102 Main Road, Kumeu, Auckland, New Zealand  
PO Box 285 Kumeu, Auckland 0841, New Zealand  
Note: Details may be subject to change without notification

T.09 412-7722  
F.09 412-7723  
[www.jsctimber.co.nz](http://www.jsctimber.co.nz)

Scale: 1:2

Date: 09/06/10

Dwg:  
**JVR-IG-02**

## JSC Timber Installation guide for Vertical Shiplap Weatherboards 2009

External corners to be weatherproofed by the use of corrosion resistant back flashing to be used behind the weatherboards at all external corners. Use external Western Red Cedar corner moulds, options include JSC Timber J40 and J42 and 90mm x 19mm and 65mm x 19mm cover boards to form external box corners. Refer to JSC Timber fixing details.

Internal corners to be weatherproofed by the use of corrosion resistant back flashing to be behind the weatherboards at all internal corners. The use of internal Western Red Cedar corner moulds options includes JSC Timber J41. Refer to JSC Timber fixing details. In addition all cut edges are to be sealed prior to installation and manufacturers coating schedules adhered to.

### JSC CedarShield:

In-line factory applied weatherboard coating system that applies an envelope seal to the weatherboard. In-line factory coating options include both oil and water based coating systems. Advanced spray application JSC CedarShield has been specifically designed to maximise performance and drying time of both penetrative coatings and migrating oils.

### Product installation guidelines

Vertical Shiplap Weatherboards Architectural Profile



102 Main Road, Kumeu, Auckland, New Zealand  
PO Box 285 Kumeu, Auckland 0841, New Zealand  
Note: Details may be subject to change without notification

T.09 412-7722  
F.09 412-7723  
[www.jsctimber.co.nz](http://www.jsctimber.co.nz)

Scale: 1:2

Date: 09/06/10

Dwg:  
**JVR-IG-03**

## Profiles

- Shall be machined to NZS 3617 and or Branz bulletin 411.

## Durability

- Timber weatherboards to comply with NZS3602 - B2 durability.

## Compatibility of Materials

- To comply with table 20 "Material selection" E2/AS1.
- To comply with Table 21 "Combatability of materials in contact" E2/AS1.
- To comply with Table 22 "Combatability of materials subject to run off" E2/AS1.

## Building wraps and Underlays

- To comply with Table 23 "Properties of Underlays and building wraps" E2/AS1.
- Fixings to comply with E2/AS1 9.1.8.5 "Wall framing behind cavities".

## Fixings

- To comply with Table 24 "Fixings selection for wall claddings" E2/AS1, refer to B2 Durability requirements.

## General Fixings

- Profiles shall be machined to NZS3617 and or Branz bulletin 411.
- All nail fixings pre-drilled minimum 1mm diameter smaller than the nail gauge.
- All products to be precoated & cut edges to be sealed to JSC specifications.
- Provide PVC tape bond break between H3.2 battens and any aluminium flashing.
- Rusticated and Vertical Shiplap Weatherboards to be fixed with a minimum gap of 2mm at the overlap between boards.
- Rebated bevelback profiles to be fixed with a minimum gap of 2mm at the overlap between boards.
- Ensure Bevel Back Weatherboard, weathergrooves are in line with a minimum 32mm lap.
- All materials and fixtures are to comply with E2/AS1 Clause 2.2
- All Aluminium joinery to comply with NZS/BC 4211
- Option PBS Rigid Air Barrier to be sealed with SikaGuard 703w to manufacturers specification.

## CedarShield

- Weatherboards are to be factory coated to all sides prior to installation.
- Weatherboards shall be annually cleaned and recoated to manufacturers recommendations and maintenance guidelines.

## General installation keynotes

### General keynotes

102 Main Road, Kumeu, Auckland, New Zealand  
PO Box 285 Kumeu, Auckland 0841, New Zealand  
Note: Details may be subject to change without notification

**JSC Timber**

T.09 412-7722  
F.09 412-7723  
[www.jsctimber.co.nz](http://www.jsctimber.co.nz)

Scale: NTS

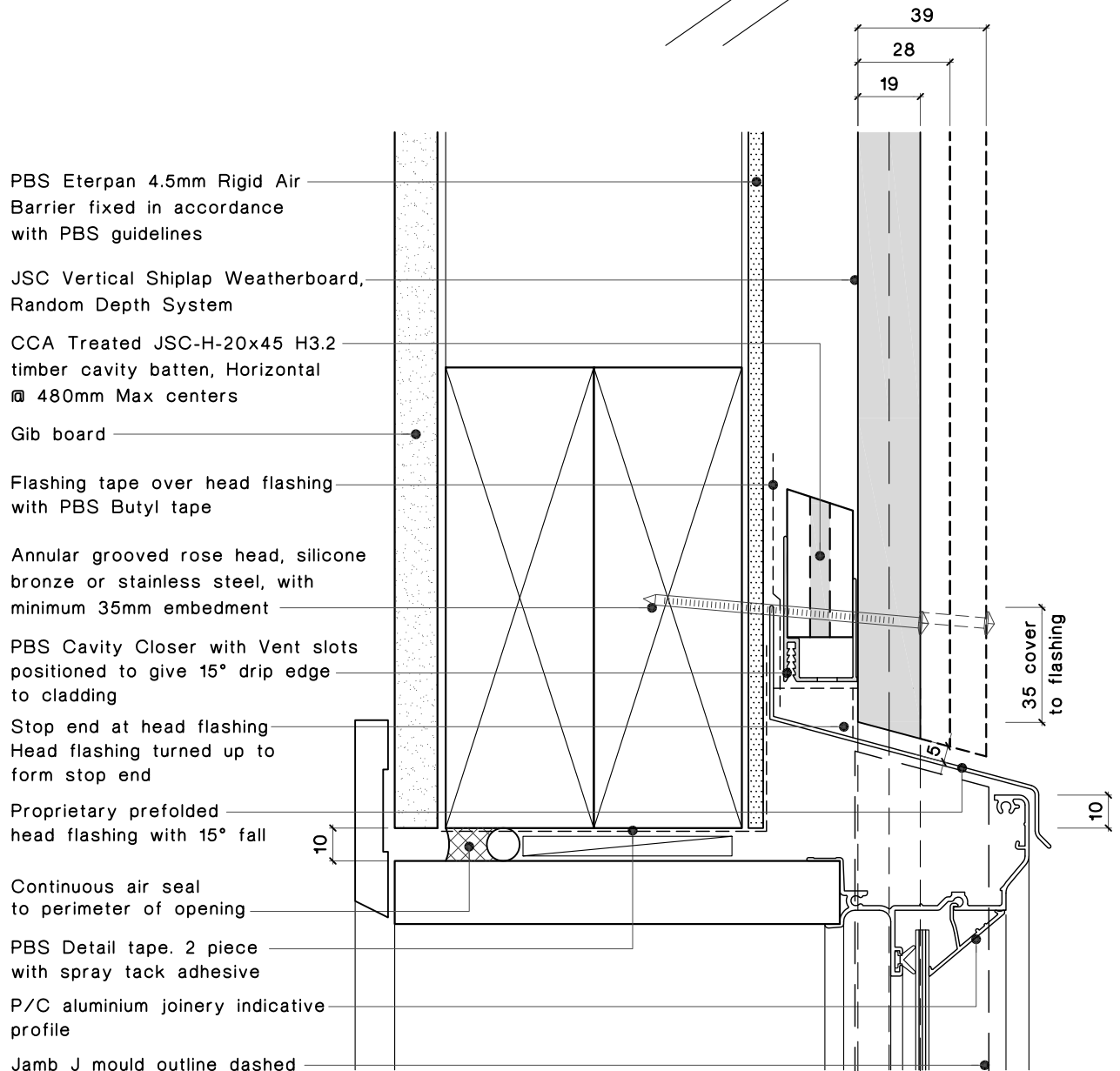
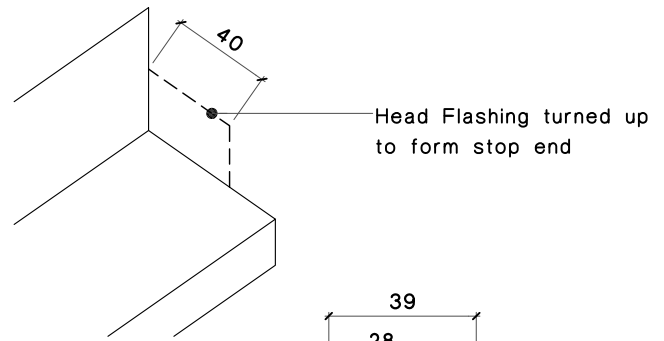
Date: 09/06/10

Dwg:

**JVR-RB-KN**

Notes:

- All nail fixings pre-drilled minimum 1mm diameter smaller than the nail gauge.
- All products to be precoated & cut edges to be sealed as per Branz Bulletin 411.
- All materials and fixtures are to comply with E2/AS1 Clause 2.2
- Provide PVC tape bond break between H3.2 battens and any flashing.
- Vertical Shiplap Profiles to be fixed with a minimum 2mm gap at the overlap between boards.
- Option PBS Rigid Air Barrier to be sealed with SikaGuard 703w to manufacturers specification.



## Aluminium Window Head detail

Vertical Shiplap Architectural Profile

**JSC Timber**

102 Main Road, Kumeu, Auckland, New Zealand  
PO Box 285 Kumeu, Auckland 0841, New Zealand

Note: Details may be subject to change without notification

T.09 412-7722

F.09 412-7723

[www.jsctimber.co.nz](http://www.jsctimber.co.nz)

Scale: 1:2

Date: 09/06/10

Dwg:

**JVR-RB-01**

Notes:

- All nail fixings pre-drilled minimum 1mm diameter smaller than the nail gauge.
- All products to be pre-coated & cut edges to be sealed as per Branz Bulletin 411.
- All materials and fixtures are to comply with E2/AS1 Clause 2.2
- Provide PVC tape bond break between H3.2 battens and any flashing.
- Vertical Shiplap Profiles to be fixed with a minimum 2mm gap at the overlap between boards.
- Option PBS Rigid Air Barrier to be sealed with SikaGuard 703w to manufacturers specification.

CCA Treated JSC-H-20x45 H3.2  
timber cavity batten, Horizontal @  
480mm Max centers

PBS Eterpan 4.5mm Rigid Air  
Barrier fixed in accordance  
with PBS guidelines

Gib board

JSC Vertical Shiplap  
Weatherboard, Random Depth  
System

CCA Treated JSC-V-20x45  
H3.2 timber cavity batten

Annular grooved rose head,  
silicone bronze or stainless steel,  
with minimum 35mm embedment

J mould jamb flashing.

19x39 dressed profile  
timber

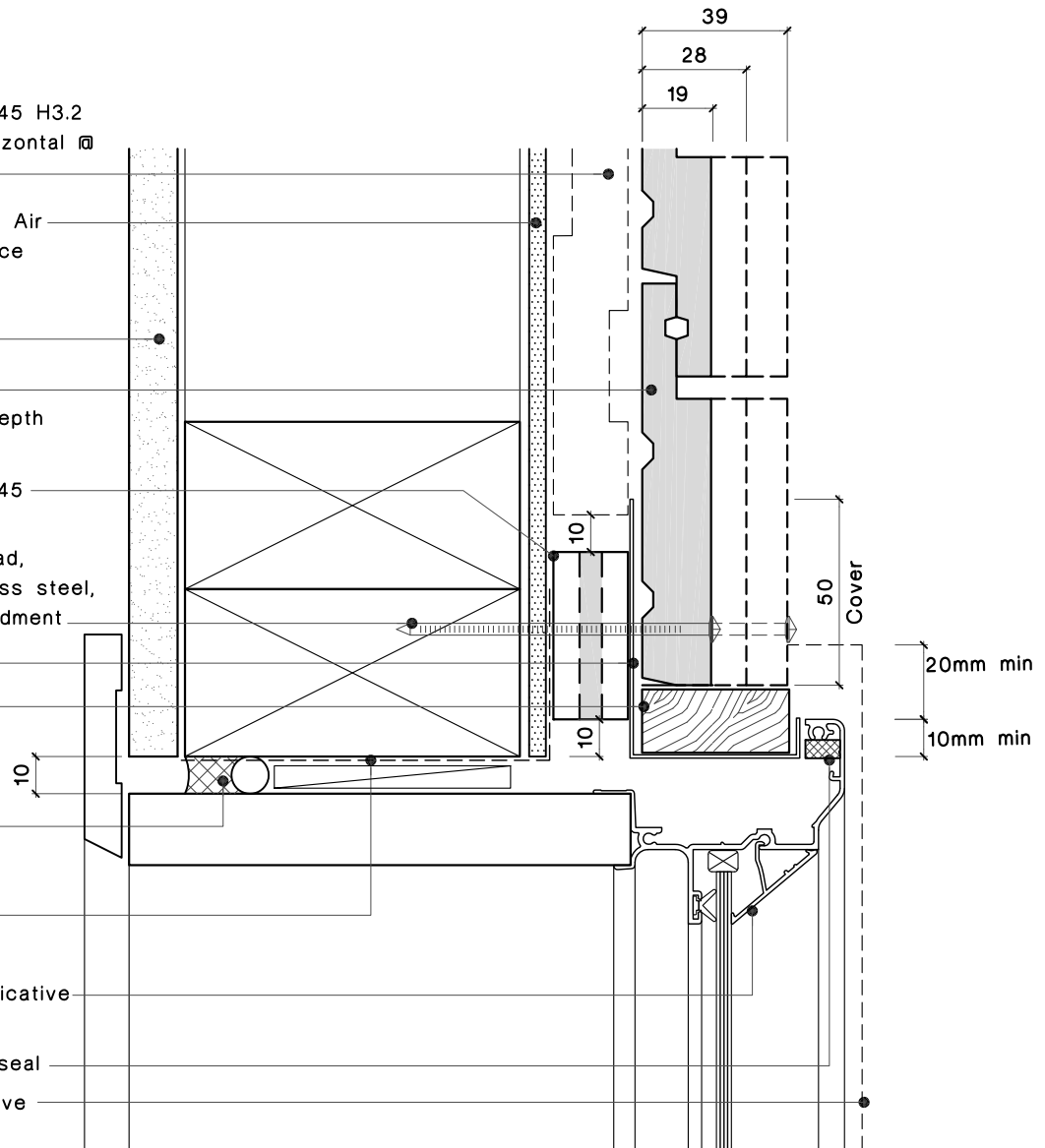
Continuous air seal to  
perimeter of opening

PBS Detail tape. 2 piece  
with spray tack adhesive

P/C aluminium joinery indicative  
profile

Compressible foam tape seal

Line of head flashing above



## Aluminium Window Jamb detail

Vertical Shiplap Architectural Profile

**JSC Timber**

102 Main Road, Kumeu, Auckland, New Zealand  
PO Box 285 Kumeu, Auckland 0841, New Zealand

Note: Details may be subject to change without notification

T.09 412-7722

F.09 412-7723

[www.jsctimber.co.nz](http://www.jsctimber.co.nz)

Scale: 1:2

Date: 09/06/10

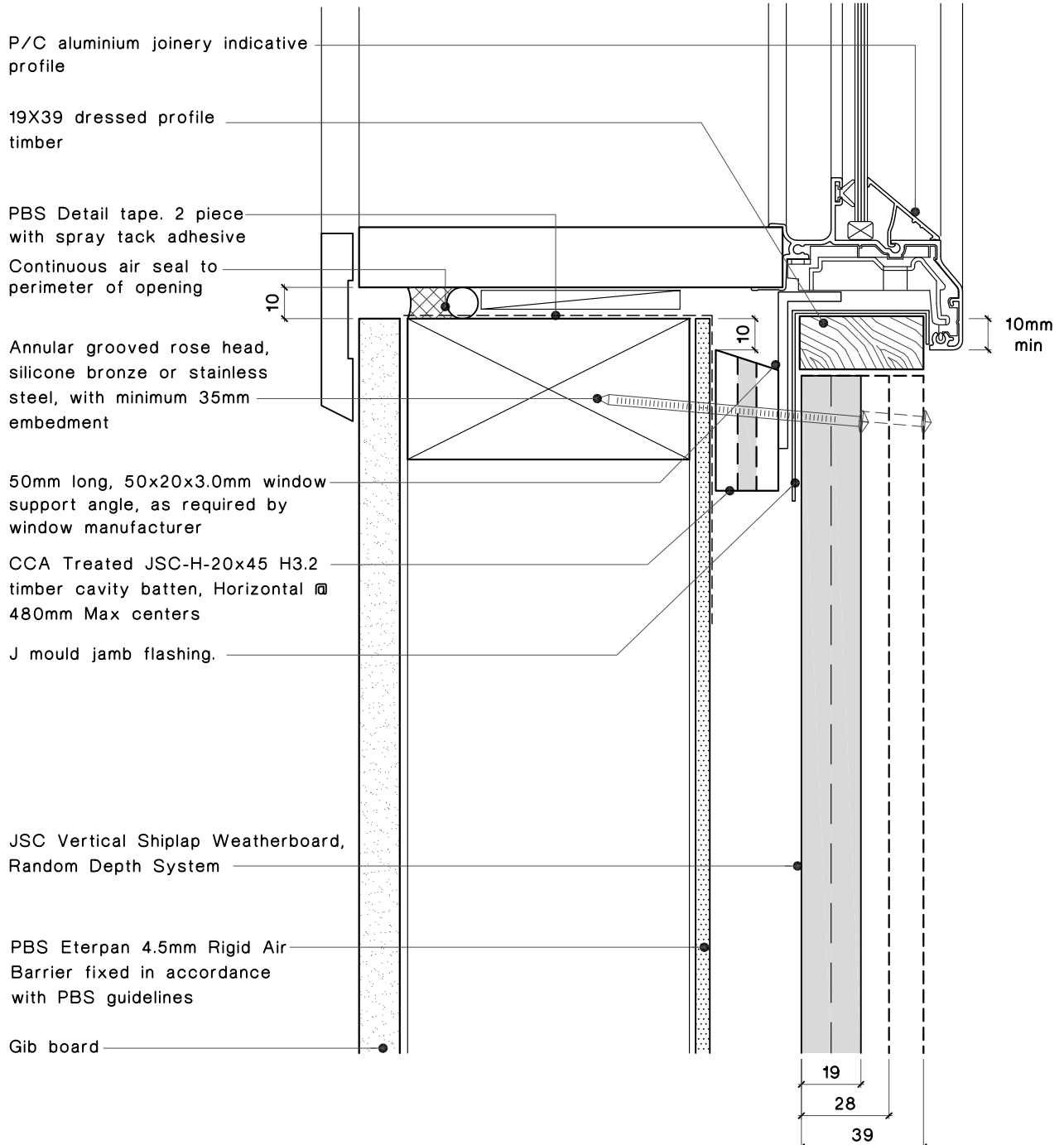
Dwg:

**JVR-RB-02**



**Notes:**

- All nail fixings pre-drilled minimum 1mm diameter smaller than the nail gauge.
- All products to be pre-coated & cut edges to be sealed as per Branz Bulletin 411.
- All materials and fixtures are to comply with E2/AS1 Clause 2.2
- Provide PVC tape bond break between H3.2 battens and any flashing.
- Vertical Shiplap Profiles to be fixed with a minimum 2mm gap at the overlap between boards.
- Option PBS Rigid Air Barrier to be sealed with SikaGuard 703w to manufacturers specification.



## Aluminium Window Sill detail

### Vertical Shiplap Architectural Profile

**JSC Timber**

102 Main Road, Kumeu, Auckland, New Zealand  
PO Box 285 Kumeu, Auckland 0841, New Zealand

Note: Details may be subject to change without notification

T.09 412-7722

F.09 412-7723

[www.jsctimber.co.nz](http://www.jsctimber.co.nz)

Scale: 1:2

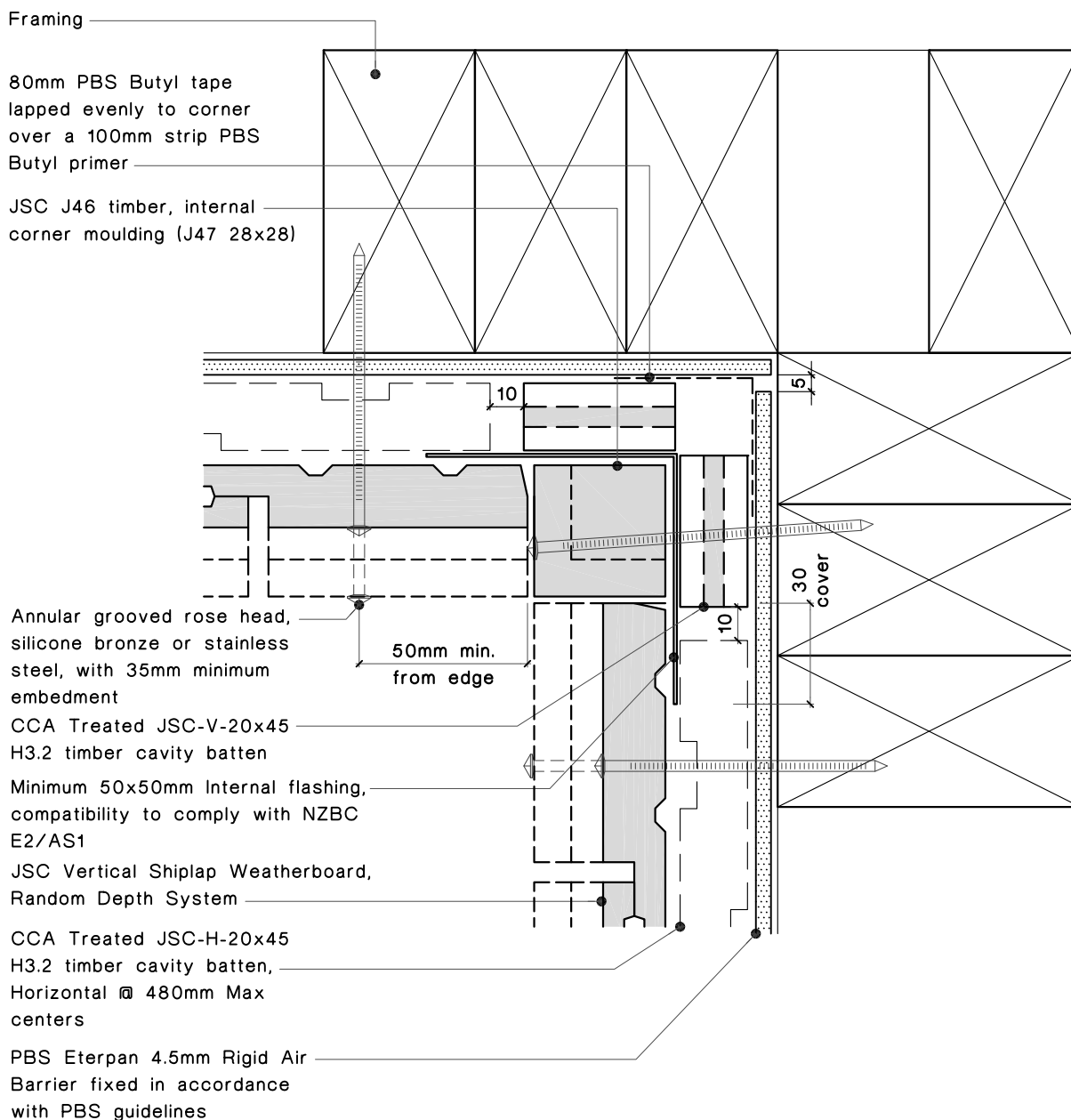
Date: 09/06/10

Dwg:

**JVR-RB-03**

## Notes:

- All nail fixings pre-drilled minimum 1mm diameter smaller than the nail gauge.
- All products to be precoated & cut edges to be sealed as per Branz Bulletin 411.
- All materials and fixtures are to comply with E2/AS1 Clause 2.2
- Provide PVC tape bond break between H3.2 battens and any flashing.
- Vertical Shiplap Profiles to be fixed with a minimum 2mm gap at the overlap between boards.
- Option PBS Rigid Air Barrier to be sealed with SikaGuard 703w to manufacturers specification.



## Internal corner detail

Vertical Shiplap Weatherboards Architectural Profile

**JSC Timber**

102 Main Road, Kumeu, Auckland, New Zealand  
 PO Box 285 Kumeu, Auckland 0841, New Zealand  
 Note: Details may be subject to change without notification

T.09 412-7722  
 F.09 412-7723  
[www.jsctimber.co.nz](http://www.jsctimber.co.nz)

Scale: 1:2

Date: 09/06/10

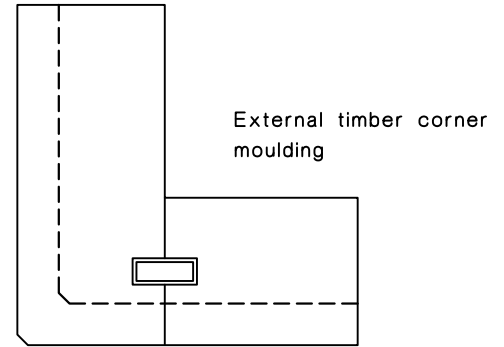
Dwg:  
**JVR-RB-04**

#### Notes:

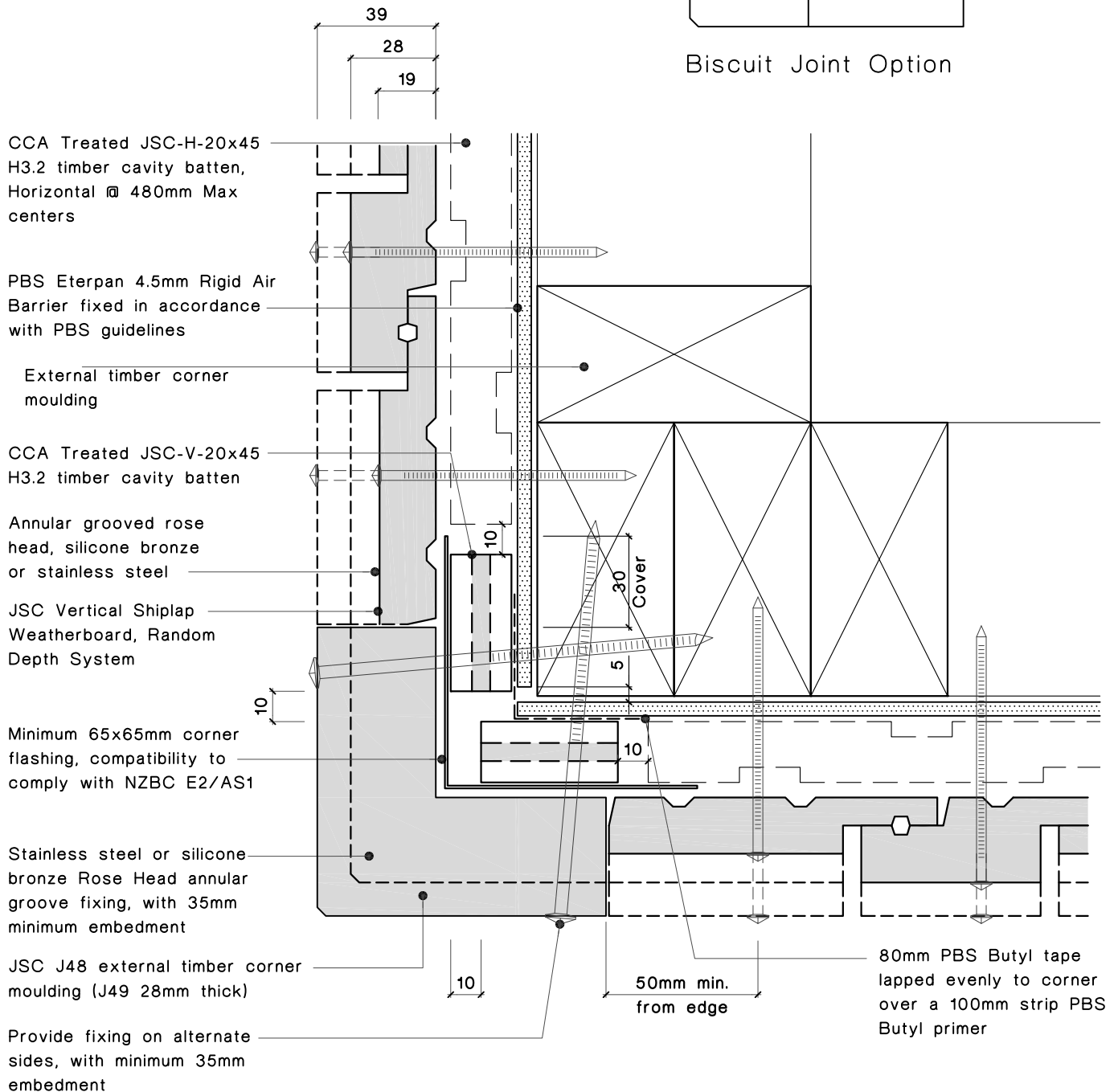
- All nail fixings pre-drilled minimum 1mm diameter smaller than the nail gauge.
- All products to be precoated & cut edges to be sealed as per Branz Bulletin 411.
- All materials and fixtures are to comply with E2/AS1 Clause 2.2
- Provide PVC tape bond break between H3.2 battens and any flashing.
- Vertical Shiplap Profiles to be fixed with a minimum 2mm gap at the overlap between boards.
- Option PBS Rigid Air Barrier to be sealed with SikaGuard 703w to manufacturers specification.

# JSC VertiClad

## Random Width + Depth System



Biscuit Joint Option



## External corner detail

Vertical Shiplap Weatherboards Architectural Profile

**JSC Timber**

102 Main Road, Kumeu, Auckland, New Zealand  
PO Box 285 Kumeu, Auckland 0841, New Zealand  
Note: Details may be subject to change without notification

T.09 412-7722  
F.09 412-7723  
www.jsctimber.co.nz

Scale: 1:2

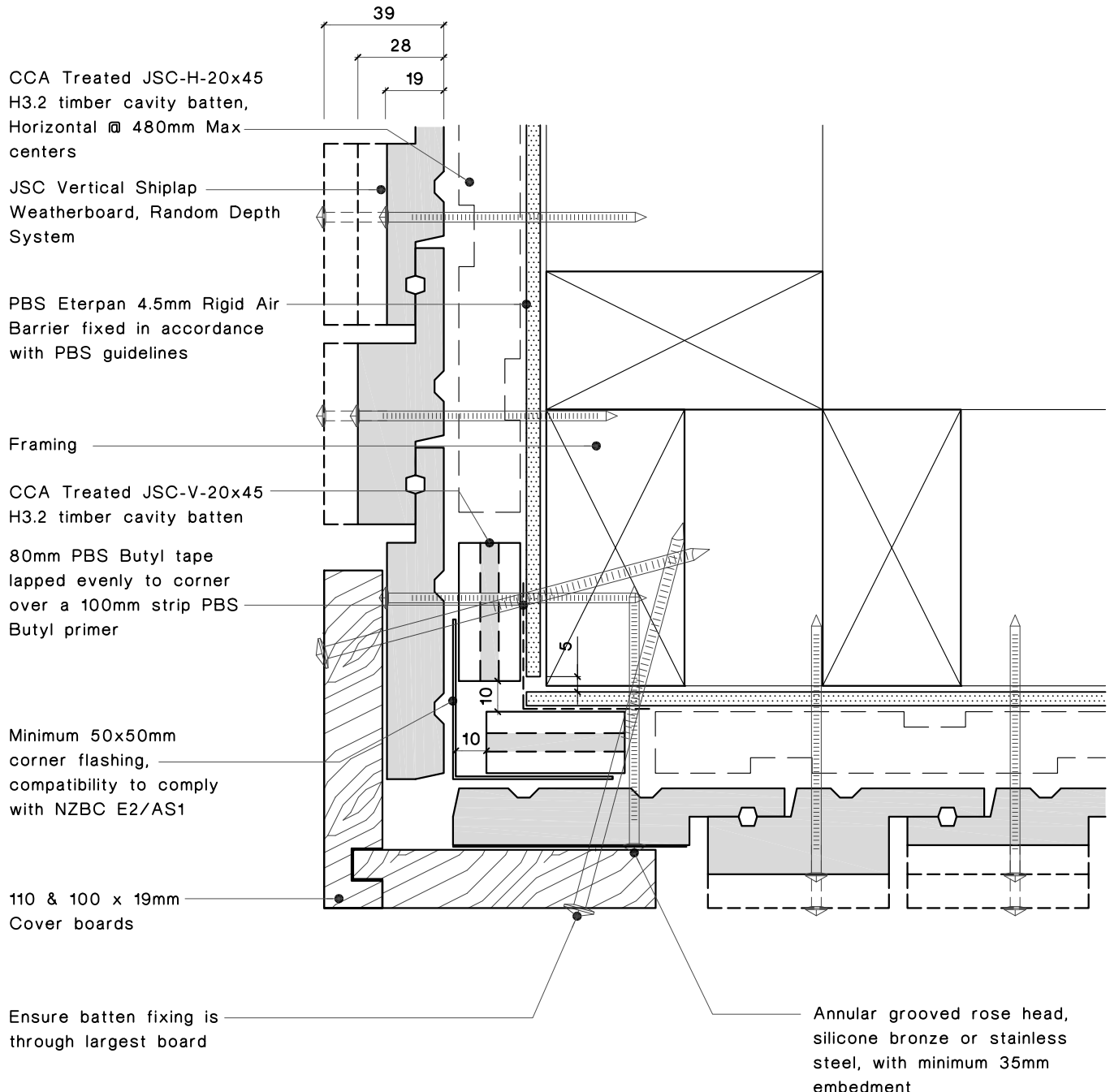
Date: 09/06/10

Dwg:

**JVR-RB-05**

#### Notes:

- All nail fixings pre-drilled minimum 1mm diameter smaller than the nail gauge.
- All products to be precoated & cut edges to be sealed as per Branz Bulletin 411.
- All materials and fixtures are to comply with E2/AS1 Clause 2.2
- Provide PVC tape bond break between H3.2 battens and any flashing.
- Vertical Shiplap Profiles to be fixed with a minimum 2mm gap at the overlap between boards.
- Option PBS Rigid Air Barrier to be sealed with SikaGuard 703w to manufacturers specification.



## External corner detail

### Vertical Shiplap Weatherboards Architectural Profile

**JSC Timber**

102 Main Road, Kumeu, Auckland, New Zealand  
PO Box 285 Kumeu, Auckland 0841, New Zealand  
Note: Details may be subject to change without notification

T.09 412-7722  
F.09 412-7723  
[www.jsctimber.co.nz](http://www.jsctimber.co.nz)

Scale: 1:2

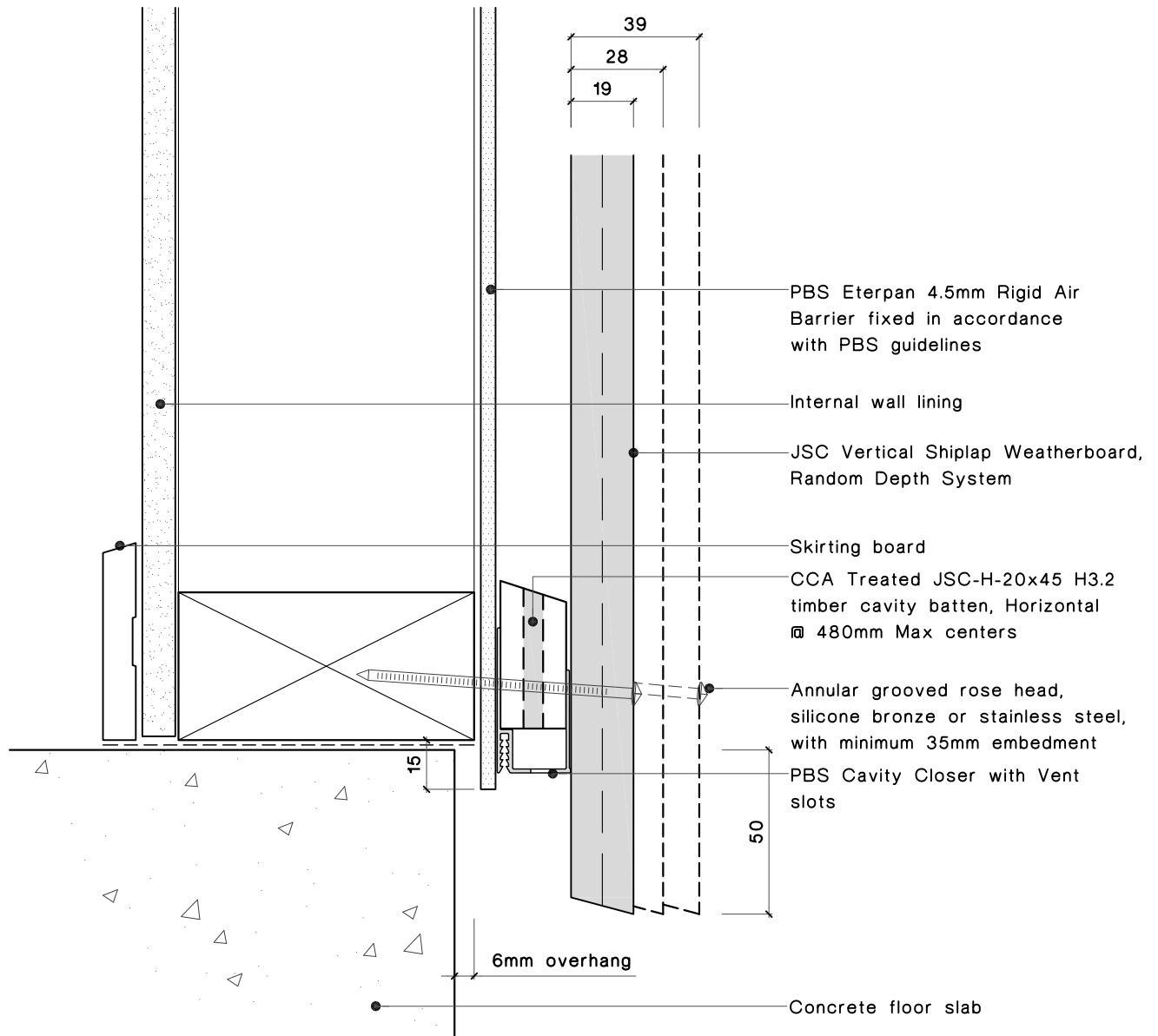
Date: 09/06/10

Dwg:

**JVR-RB-06**

Notes:

- All nail fixings pre-drilled minimum 1mm diameter smaller than the nail gauge.
- All products to be precoated & cut edges to be sealed as per Branz Bulletin 411.
- All materials and fixtures are to comply with E2/AS1 Clause 2.2
- Provide PVC tape bond break between H3.2 battens and any flashing.
- Vertical Shiplap Profiles to be fixed with a minimum 2mm gap at the overlap between boards.
- Option PBS Rigid Air Barrier to be sealed with SikaGuard 703w to manufacturers specification.



## Bottom Plate detail

Vertical Shiplap Weatherboards Architectural Profile

**JSC Timber**

102 Main Road, Kumeu, Auckland, New Zealand  
PO Box 285 Kumeu, Auckland 0841, New Zealand  
Note: Details may be subject to change without notification

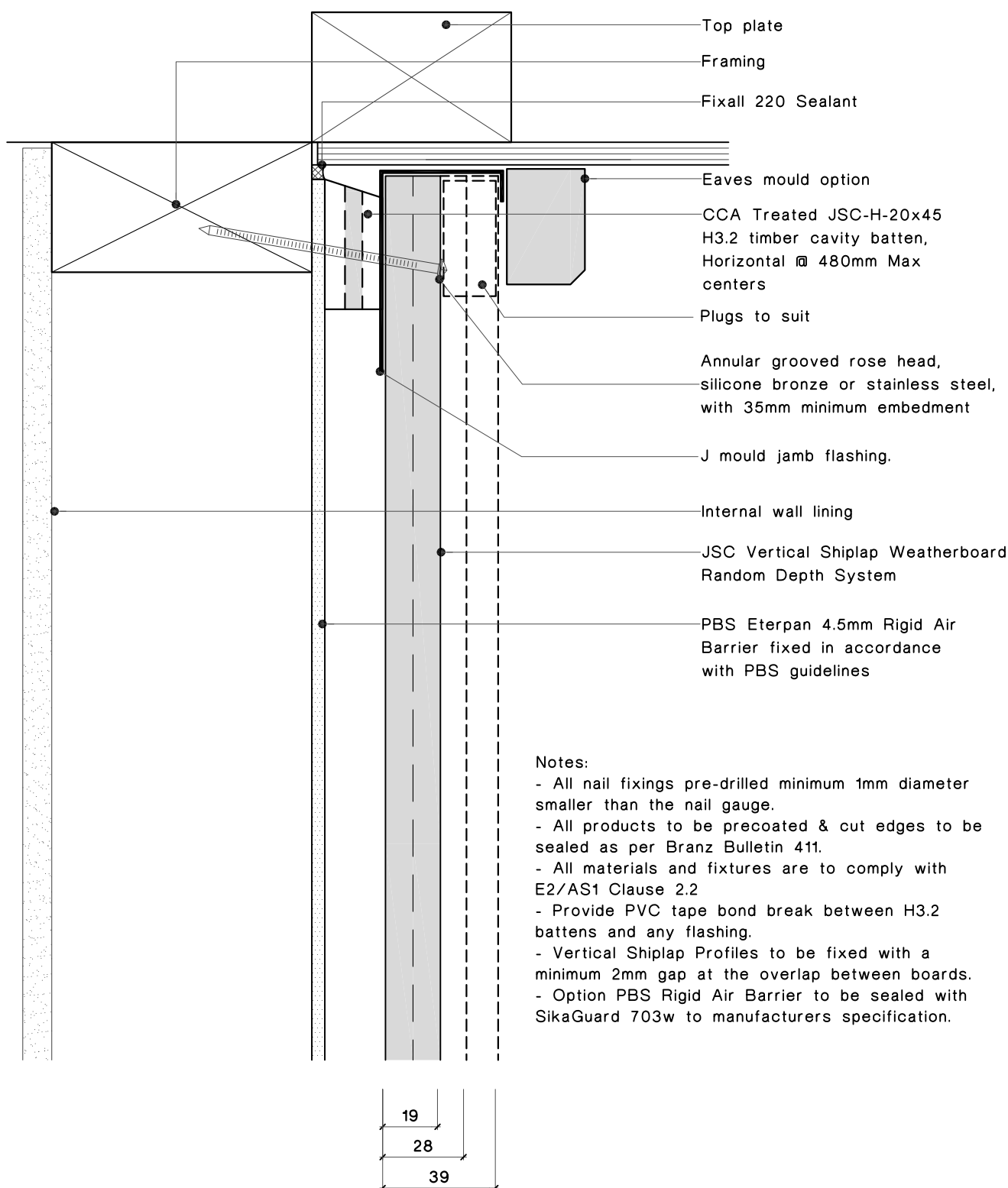
T.09 412-7722  
F.09 412-7723  
[www.jsctimber.co.nz](http://www.jsctimber.co.nz)

Scale: 1:1

Date: 17/05/10

Dwg:

**JVR-RB-07**



## Top Plate to Soffit detail

Vertical Shiplap Weatherboards Architectural Profile

**JSC Timber**

Scale: 1:2

Date: 09/06/10

Dwg:

**JVR-RB-08**

102 Main Road, Kumeu, Auckland, New Zealand  
PO Box 285 Kumeu, Auckland 0841, New Zealand

Note: Details may be subject to change without notification

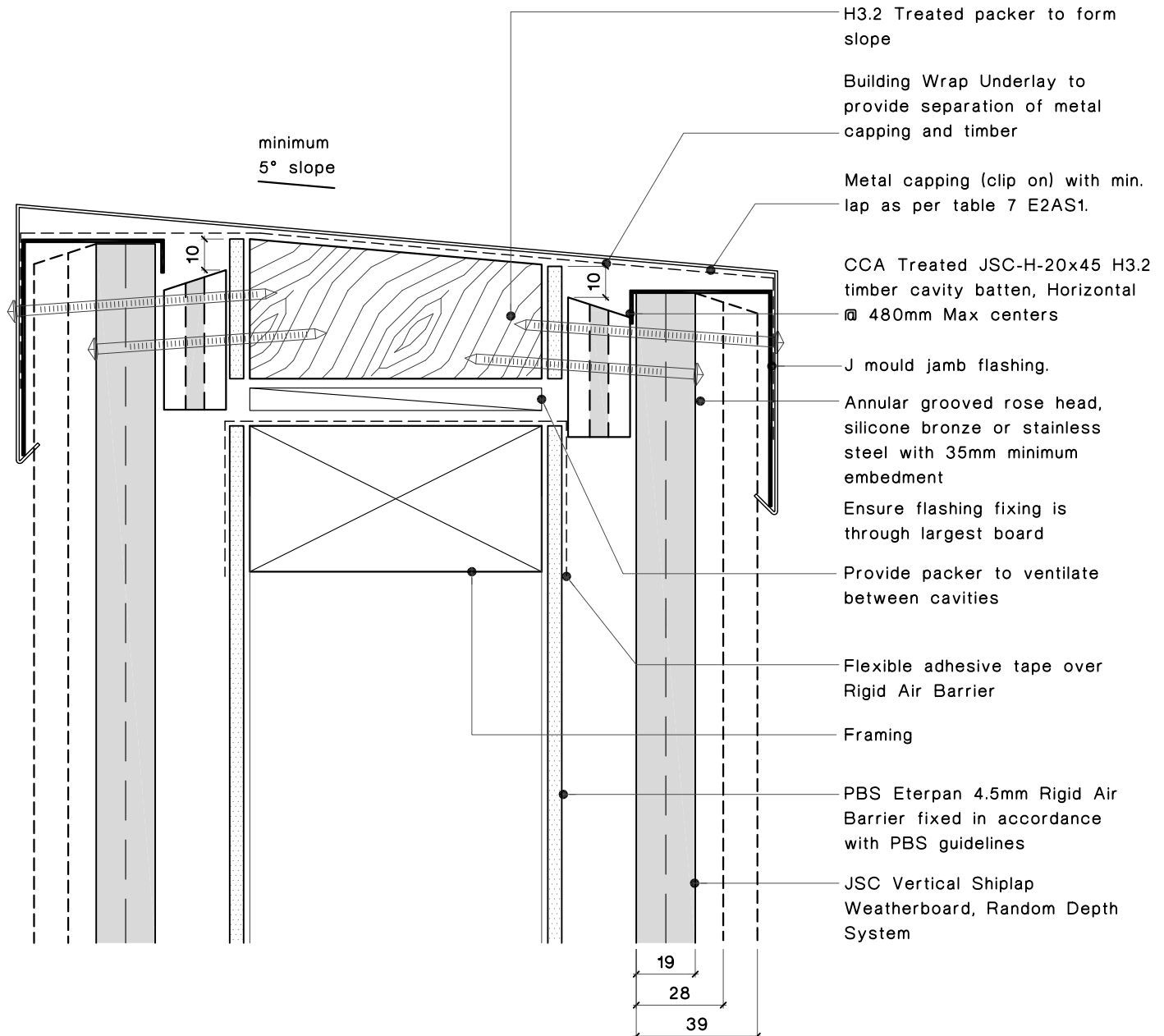
T.09 412-7722

F.09 412-7723

[www.jsctimber.co.nz](http://www.jsctimber.co.nz)

## Notes:

- All nail fixings pre-drilled minimum 1mm diameter smaller than the nail gauge.
- All products to be precoated & cut edges to be sealed as per Branz Bulletin 411.
- All materials and fixtures are to comply with E2/AS1 Clause 2.2
- Provide PVC tape bond break between H3.2 battens and any flashing.
- Vertical Shiplap Profiles to be fixed with a minimum 2mm gap at the overlap between boards.
- Option PBS Rigid Air Barrier to be sealed with SikaGuard 703w to manufacturers specification.



## Parapet detail

Vertical Shiplap Weatherboards Architectural Profile

**JSC Timber**

102 Main Road, Kumeu, Auckland, New Zealand  
 PO Box 285 Kumeu, Auckland 0841, New Zealand  
 Note: Details may be subject to change without notification

T.09 412-7722  
 F.09 412-7723  
[www.jsctimber.co.nz](http://www.jsctimber.co.nz)

Scale: 1:2

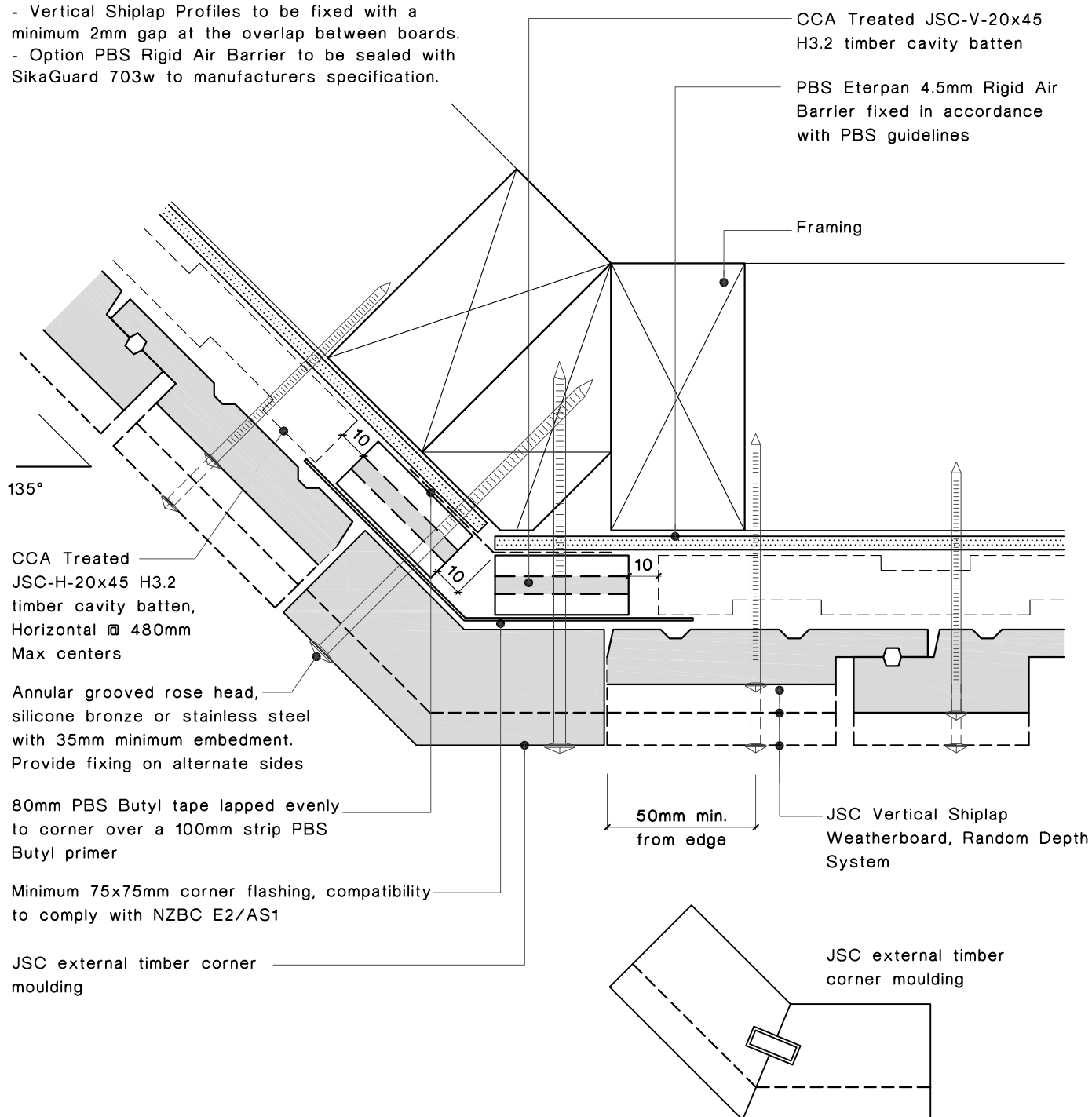
Date: 09/06/10

Dwg:

**JVR-RB-09**

## Notes:

- All nail fixings pre-drilled minimum 1mm diameter smaller than the nail gauge.
- All products to be precoated & cut edges to be sealed as per Branz Bulletin 411.
- All materials and fixtures are to comply with E2/AS1 Clause 2.2
- Provide PVC tape bond break between H3.2 battens and any flashing.
- Vertical Shiplap Profiles to be fixed with a minimum 2mm gap at the overlap between boards.
- Option PBS Rigid Air Barrier to be sealed with SikaGuard 703w to manufacturers specification.



Biscuit Joint Option

## External corner detail

Vertical Shiplap Weatherboards Architectural Profile

**JSC Timber**

102 Main Road, Kumeu, Auckland, New Zealand  
PO Box 285 Kumeu, Auckland 0841, New Zealand  
Note: Details may be subject to change without notification

T.09 412-7722  
F.09 412-7723  
[www.jsctimber.co.nz](http://www.jsctimber.co.nz)

Scale: 1:2

Date: 09/06/10

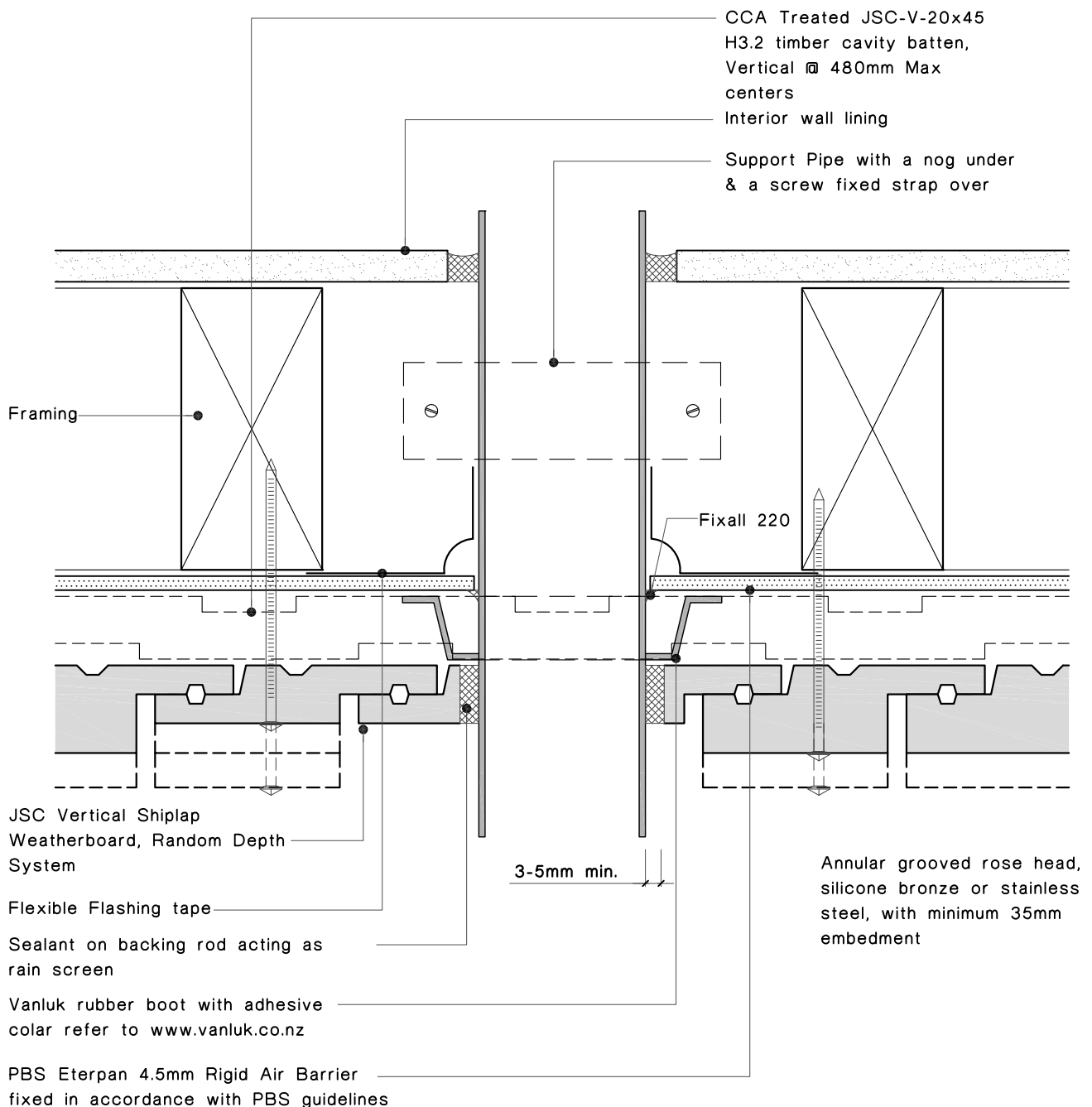
Dwg:

**JVR-RB-11**



Notes:

- All nail fixings pre-drilled minimum 1mm diameter smaller than the nail gauge.
- All products to be precoated & cut edges to be sealed as per Branz Bulletin 411.
- All materials and fixtures are to comply with E2/AS1 Clause 2.2
- Provide PVC tape bond break between H3.2 battens and any flashing.
- Vertical Shiplap Profiles to be fixed with a minimum 2mm gap at the overlap between boards.
- Option PBS Rigid Air Barrier to be sealed with SikaGuard 703w to manufacturers specification.



## Pipe Penetration detail

Vertical Shiplap Weatherboards Architectural Profile

**JSC Timber**

102 Main Road, Kumeu, Auckland, New Zealand  
PO Box 285 Kumeu, Auckland 0841, New Zealand

Note: Details may be subject to change without notification

T.09 412-7722

F.09 412-7723

www.jsctimber.co.nz

Scale: 1:2

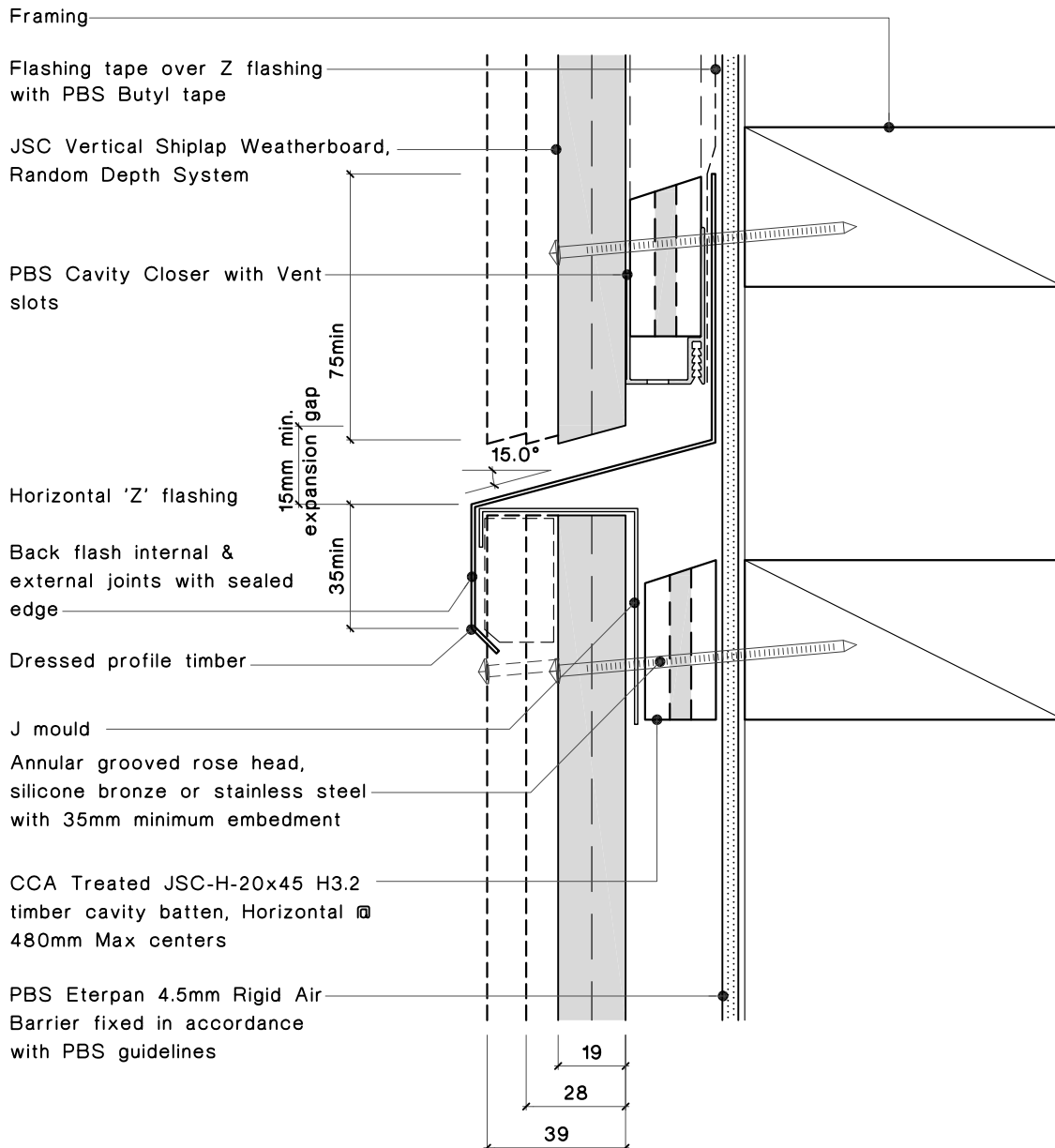
Date: 09/06/10

Dwg:

**JVR-RB-12**

Notes:

- All nail fixings pre-drilled minimum 1mm diameter smaller than the nail gauge.
- All products to be precoated & cut edges to be sealed as per Branz Bulletin 411.
- All materials and fixtures are to comply with E2/AS1 Clause 2.2
- Provide PVC tape bond break between H3.2 battens and any flashing.
- Vertical Shiplap Profiles to be fixed with a minimum 2mm gap at the overlap between boards.
- Option PBS Rigid Air Barrier to be sealed with SikaGuard 703w to manufacturers specification.



## Horizontal Joint Detail

Vertical Shiplap Weatherboards Architectural Profile

**JSC Timber**

102 Main Road, Kumeu, Auckland, New Zealand  
PO Box 285 Kumeu, Auckland 0841, New Zealand  
Note: Details may be subject to change without notification

T.09 412-7722  
F.09 412-7723  
[www.jsctimber.co.nz](http://www.jsctimber.co.nz)

Scale: 1:2

Date: 09/06/10

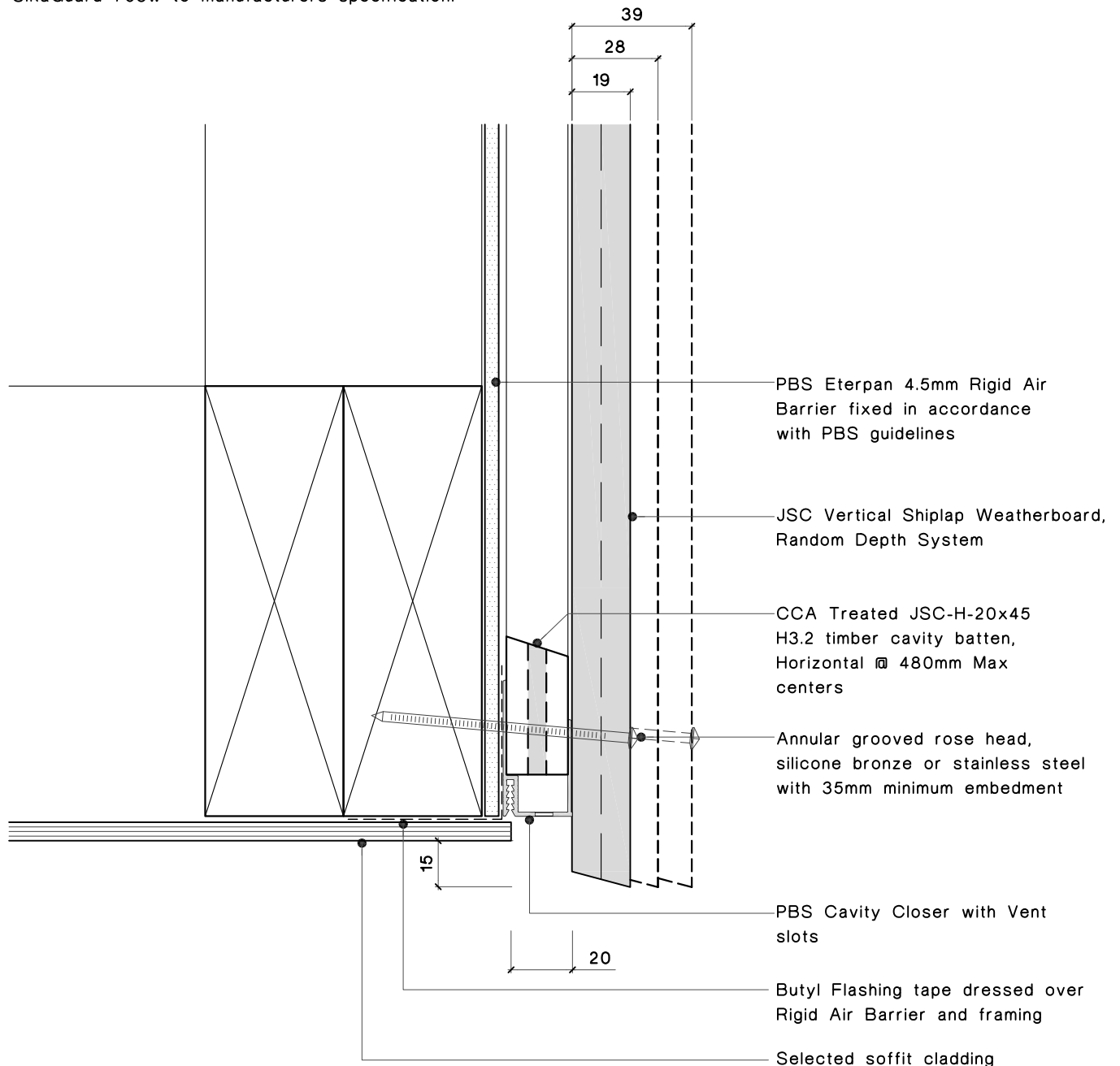
Dwg:  
**JVR-RB-13**

#### Notes:

- All nail fixings pre-drilled minimum 1mm diameter smaller than the nail gauge.
- All products to be precoated & cut edges to be sealed as per Branz Bulletin 411.
- All materials and fixtures are to comply with E2/AS1 Clause 2.2
- Provide PVC tape bond break between H3.2 battens and any flashing.
- Vertical Shiplap Profiles to be fixed with a minimum 2mm gap at the overlap between boards.
- Option PBS Rigid Air Barrier to be sealed with SikaGuard 703w to manufacturers specification.



## Random Width + Depth System



### Soffit detail

#### Vertical Shiplap Weatherboards Architectural Profile



102 Main Road, Kumeu, Auckland, New Zealand  
 PO Box 285 Kumeu, Auckland 0841, New Zealand  
 Note: Details may be subject to change without notification

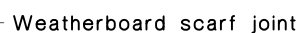
T.09 412-7722  
 F.09 412-7723  
[www.jsctimber.co.nz](http://www.jsctimber.co.nz)

Scale: 1:2

Date: 09/06/10

Dwg:

**JVR-RB-14**

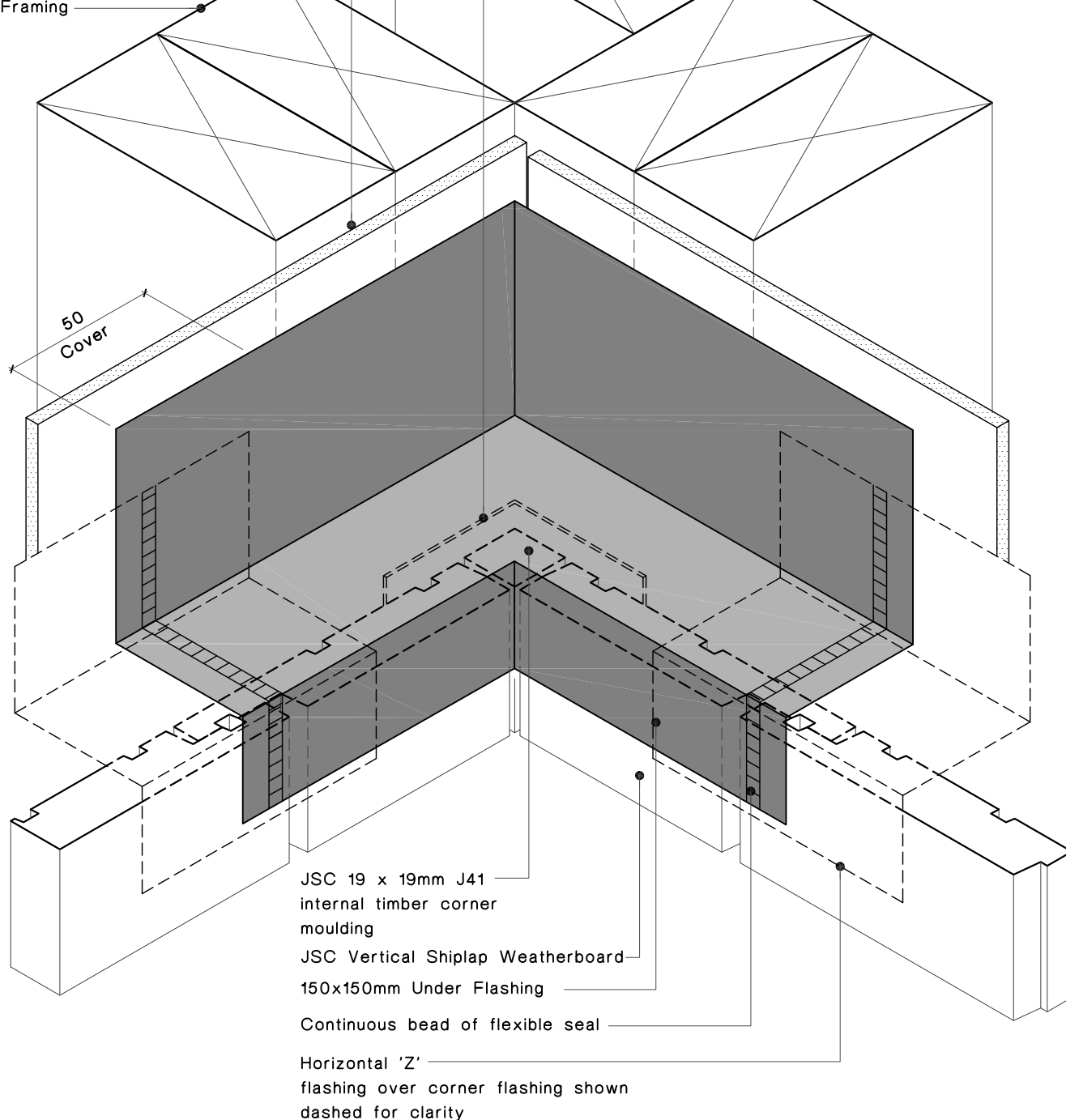


JVR-RB-15

Minimum 50x50mm Internal flashing  
hem edge folds compatibility to  
comply with NZBC E2/AS1

PBS Eterpan 4.5mm Rigid Air  
Barrier fixed in accordance  
with PBS guidelines

Framing



Note:

JSC batten, Butyl tape removed for clarity

## Internal Corner detail

Vertical Shiplap Weatherboards Architectural Profile

**JSC Timber**

102 Main Road, Kumeu, Auckland, New Zealand  
PO Box 285 Kumeu, Auckland 0841, New Zealand  
Note: Details may be subject to change without notification

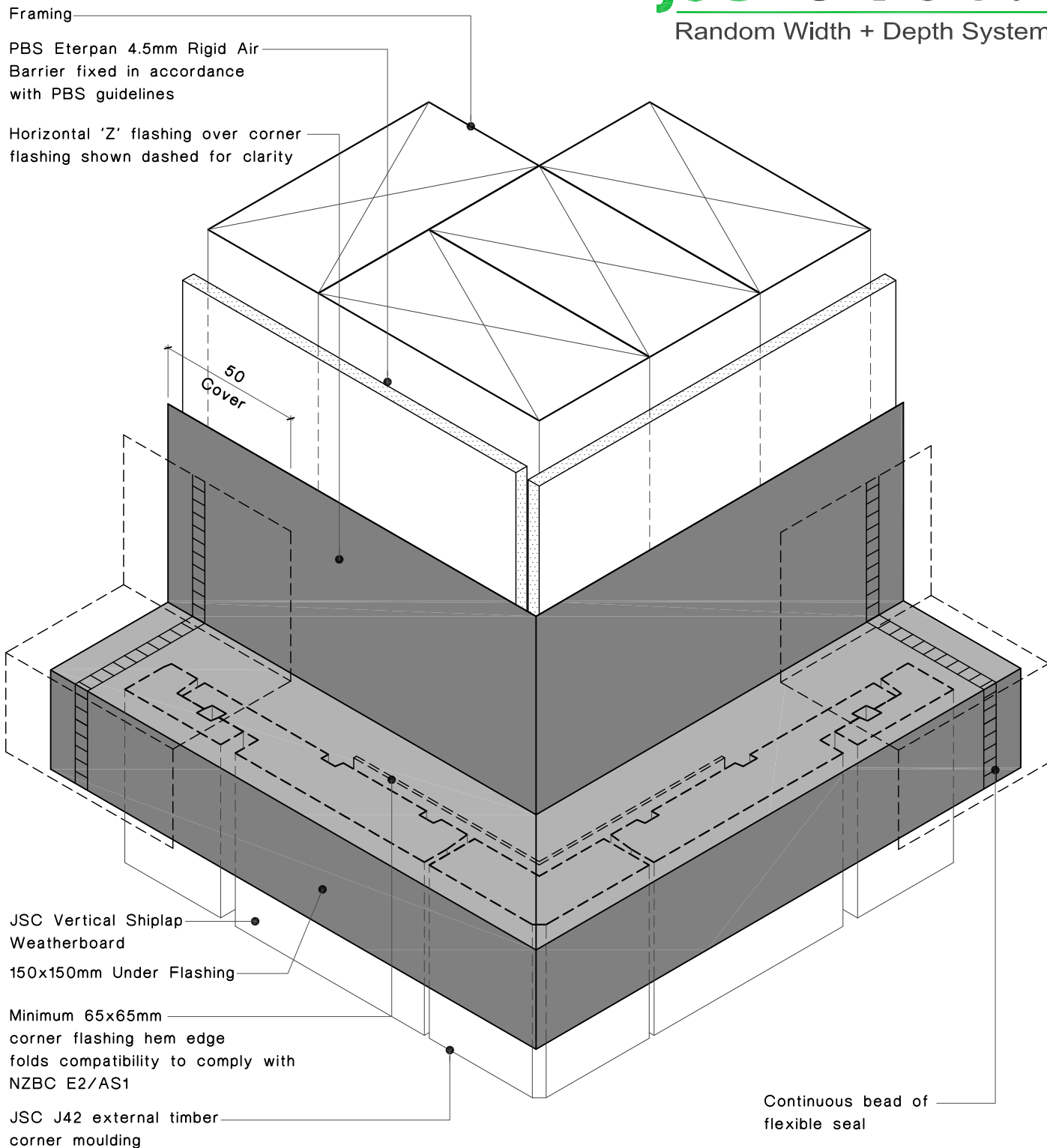
T.09 412-7722  
F.09 412-7723  
[www.jsctimber.co.nz](http://www.jsctimber.co.nz)

Scale: NTS

Date: 09/06/10

Dwg:

**JVR-RB-16**



Note:

JSC batten, Butyl tape removed for clarity

## External Corner detail

Vertical Shiplap Weatherboards Architectural Profile

**JSC Timber**

102 Main Road, Kumeu, Auckland, New Zealand  
PO Box 285 Kumeu, Auckland 0841, New Zealand

Note: Details may be subject to change without notification

T.09 412-7722

F.09 412-7723

[www.jsctimber.co.nz](http://www.jsctimber.co.nz)

Scale: NTS

Date: 09/06/10

Dwg:

**JVR-RB-17**

PBS Eterpan 4.5mm Rigid Air Barrier fixed in accordance with PBS guidelines

Horizontal 'Z' flashing corner flashing shown dashed for clarity

Framing

Glass

P/C aluminium joinery

150x150mm Window Head Under Flashing

50  
COVER

Continuous bead of flexible seal

Note:  
JSC batten & Butyl tape removed for clarity

JSC Timber Vertical Shiplap Rigid Air Barrier

45° External Corner Detail - Option

Horizontal 'Z' flashing over corner flashing shown dashed for clarity

50  
COVER

150x150mm Window Head Under Flashing

JSC Timber Vertical Shiplap Cavity System on Rigid Air Barrier

Note:

135° External Corner Detail - Option

45 & 135 degree under flashing are for the installation of window head details only

## External Corner details

Vertical Shiplap Weatherboards Architectural Profile

**JSC Timber**

102 Main Road, Kumeu, Auckland, New Zealand  
PO Box 285 Kumeu, Auckland 0841, New Zealand  
Note: Details may be subject to change without notification

T.09 412-7722  
F.09 412-7723  
[www.jsctimber.co.nz](http://www.jsctimber.co.nz)

Scale: NTS

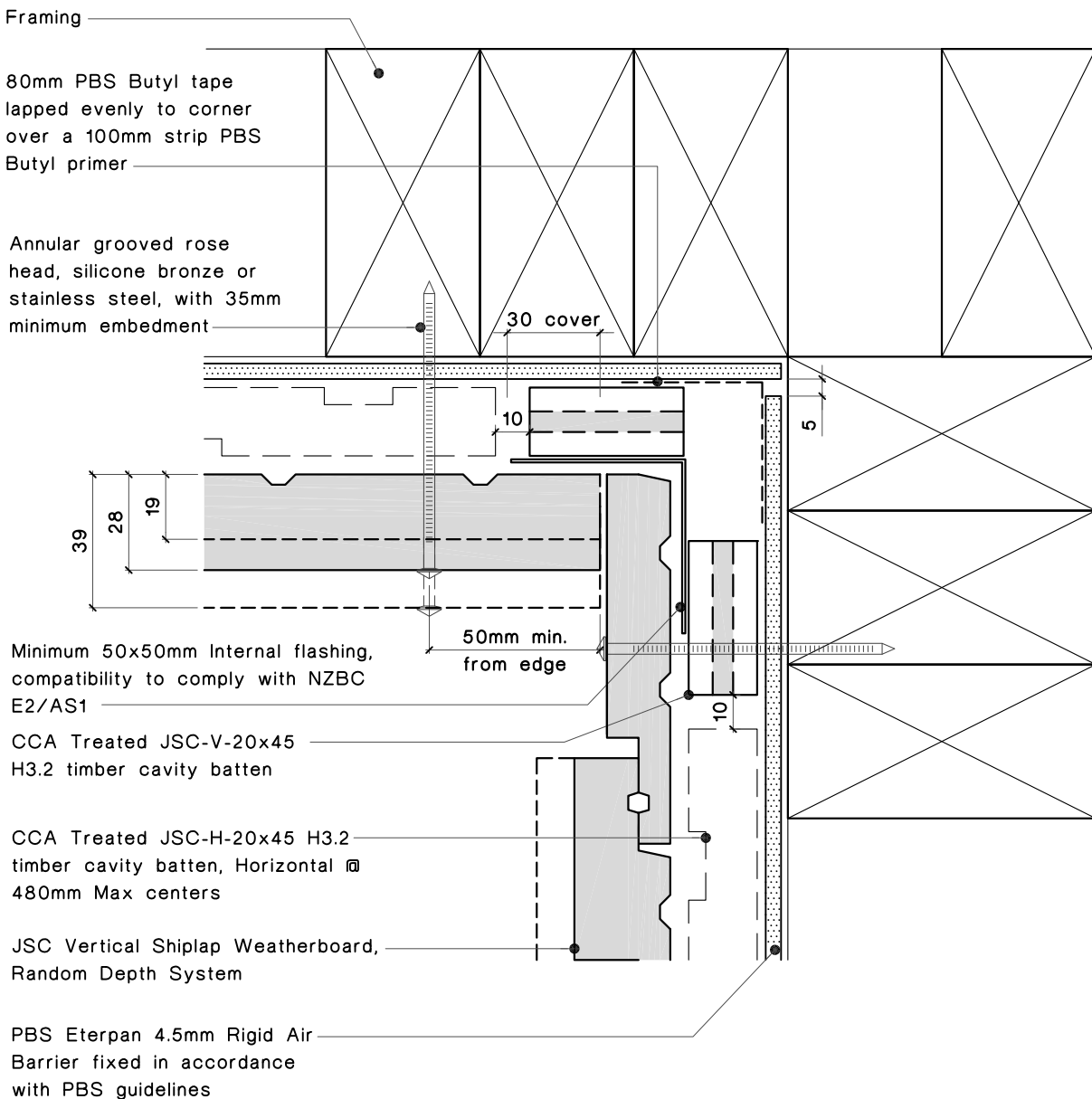
Date: 09/06/10

Dwg:

**JVR-RB-18**

**Notes:**

- All nail fixings pre-drilled minimum 1mm diameter smaller than the nail gauge.
- All products to be precoated & cut edges to be sealed as per Branz Bulletin 411.
- All materials and fixtures are to comply with E2/AS1 Clause 2.2
- Provide PVC tape bond break between H3.2 battens and any flashing.
- Vertical Shiplap Profiles to be fixed with a minimum 2mm gap at the overlap between boards.
- Option PBS Rigid Air Barrier to be sealed with SikaGuard 703w to manufacturers specification.



## Internal corner detail

Vertical Shiplap Weatherboards Architectural Profile

**JSC Timber**

102 Main Road, Kumeu, Auckland, New Zealand  
PO Box 285 Kumeu, Auckland 0841, New Zealand  
Note: Details may be subject to change without notification

T.09 412-7722  
F.09 412-7723  
[www.jsctimber.co.nz](http://www.jsctimber.co.nz)

Scale: 1:2

Date: 09/06/10

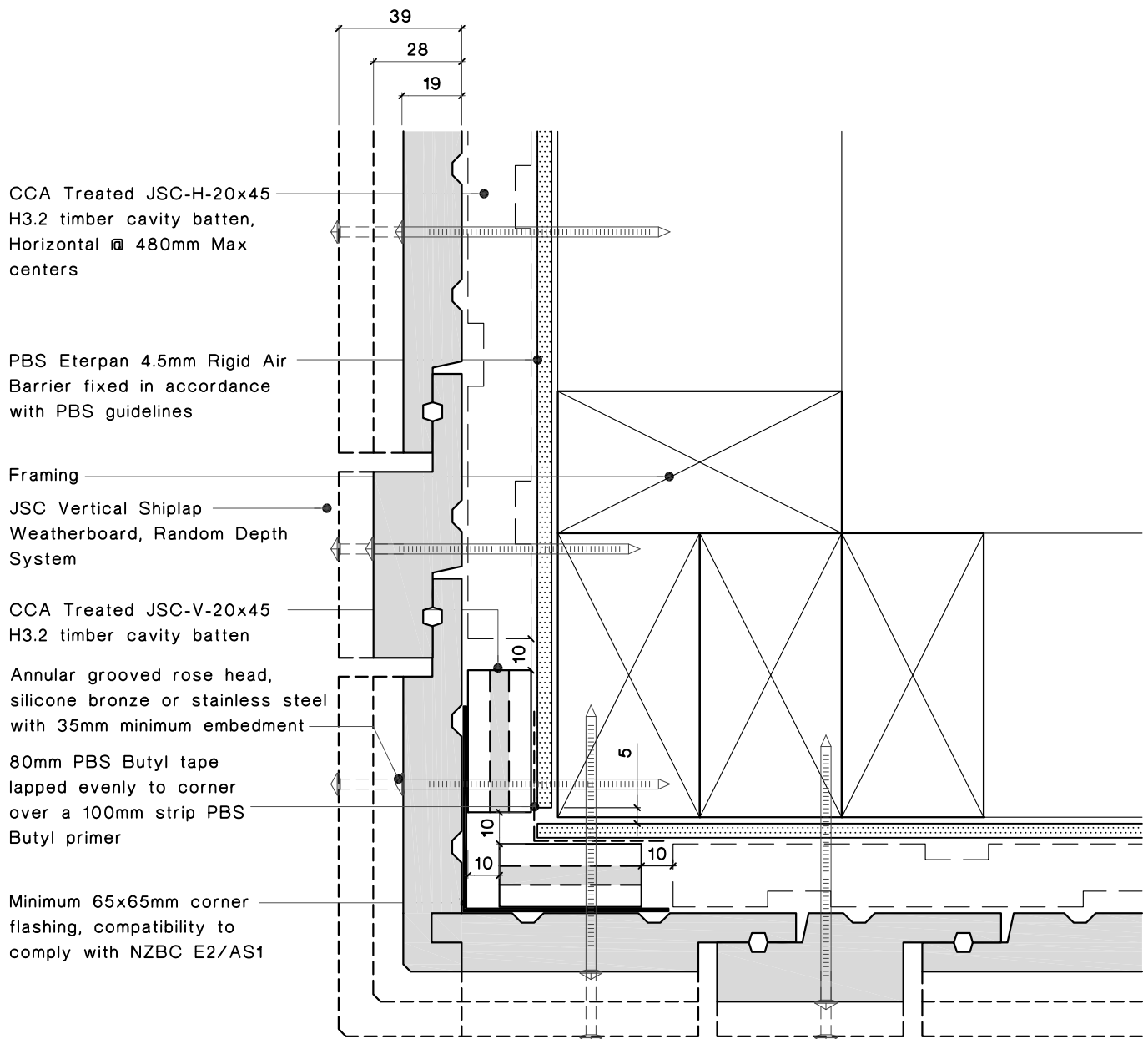
Dwg:

**JVR-RB-19**



#### Notes:

- All nail fixings pre-drilled minimum 1mm diameter smaller than the nail gauge.
- All products to be precoated & cut edges to be sealed as per Branz Bulletin 411.
- All materials and fixtures are to comply with E2/AS1 Clause 2.2
- Provide PVC tape bond break between H3.2 battens and any flashing.
- Vertical Shiplap Profiles to be fixed with a minimum 2mm gap at the overlap between boards.
- Option PBS Rigid Air Barrier to be sealed with SikaGuard 703w to manufacturers specification.



## External corner detail

### Vertical Shiplap Weatherboards Architectural Profile

**JSC Timber**

102 Main Road, Kumeu, Auckland, New Zealand  
PO Box 285 Kumeu, Auckland 0841, New Zealand

Note: Details may be subject to change without notification

T.09 412-7722

F.09 412-7723

[www.jsctimber.co.nz](http://www.jsctimber.co.nz)

Scale: 1:2

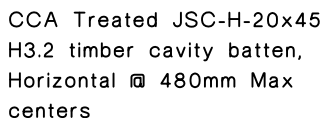
Date: 09/06/10

Dwg:

**JVR-RB-20**

## Random Width + Depth System

- All nail fixings pre-drilled minimum 1mm diameter smaller than the nail gauge.
- All products to be pre-coated & cut edges to be sealed as per Branz Bulletin 411.
- All materials and fixtures are to comply with E2/AS1 Clause 2.2
- Provide PVC tape bond break between H3.2 battens and any flashing.
- Vertical Shiplap Profiles to be fixed with a minimum 2mm gap at the overlap between boards.
- Option PBS Rigid Air Barrier to be sealed with SikaGuard 703w to manufacturers specification.



PBS Eterpan 4.5mm Rigid Air  
Barrier fixed in accordance  
with PBS guidelines

## Framing

JSC Vertical Shiplap  
Weatherboard, Random Depth  
System

CCA Treated JSC-V-20x45  
H3.2 timber cavity batten

Annular grooved rose  
head, silicone bronze or—  
stainless steel, with 35mm  
minimum embedment

80mm PBS Butyl tape —  
lapped evenly to corner  
over a 100mm strip PBS  
Butyl primer

Minimum 65x65mm corner -  
flashing, compatibility to  
comply with NZBC E2/AS1

## Vertical Shiplap Weatherboards Architectural Profile

T.09 412-7722  
F.09 412-7723  
[www.isctimber.co.nz](http://www.isctimber.co.nz)

Date: 09/06/10

Dwg:

JVR-RB-21

# JSC Timber